

What's New for MVP 10.1

MarkVisionTM Professional 10.1 includes many new features and enhancements that make managing your network devices even easier than before. By streamlining several of MVP's most prominent features and developing new functionality that provides greater management options, MarkVision Professional 10.1 fulfills our continuing commitment to provide comprehensive device management.

New and improved features in MarkVision Professional 10.1 include:

- A new Setup Wizard
- Alternate Keyboard Navigation
- Enhanced Device Discovery
- Generic File Download
- MFP Destinations Management
- Increased User Accounts and User Groups functionality
- Device Policy Conformance
- Increased Number of Configurable Settings for Device Families

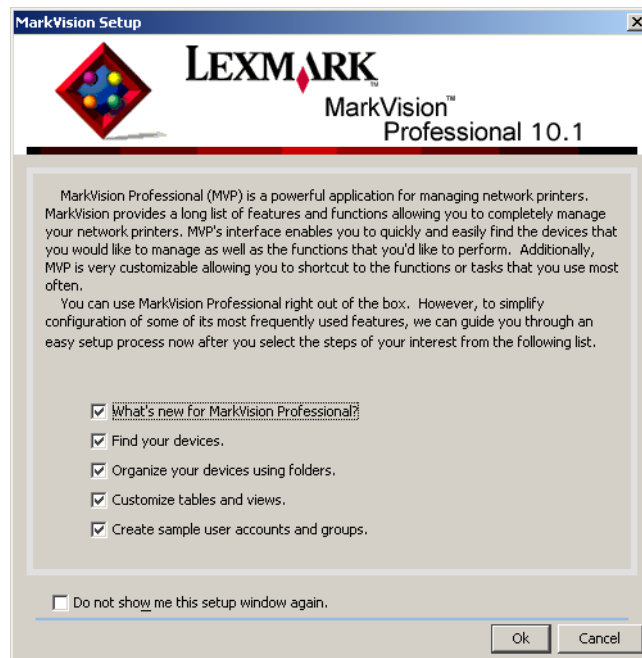
- Improved MarkVision Messenger Accessibility
- MarkVision Professional for Macintosh Look and Feel

Setup Wizard

The new MarkVision setup wizard makes configuring MVP to your needs a snap. After you have installed MarkVision and logged into MVP the first time, the Setup Wizard appears to guide you in setting up four of MarkVision's most frequently used features: Device Discovery, Folder Setup,

Custom Tables and Custom Views, and User Accounts and User Groups. These features let you locate and organize your devices, as well as establish who has access to each of the devices that are discovered. You also have the option to pick and choose which of the features you want to include in the setup. While we recommend including each of the available features, to customize your options, simply uncheck the boxes next to the features that you don't want to set up.

The Setup Wizard will appear every time you start



MVP Setup Wizard

an MVP client session until you check **Do not show me this setup window again**. If at any time you want to access the Setup Wizard again, you can open it from the MarkVision menu options by selecting **MarkVision → MarkVision Setup**.

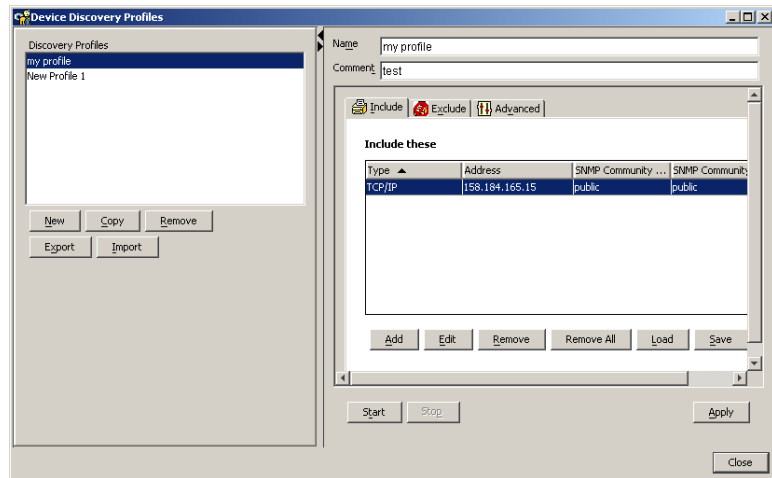
Alternate Keyboard Navigation

MarkVision Professional 10.1 now offers alternate keyboard navigation based on current industry standards.

MVP's user interface and subsequent task oriented dialog boxes can be navigated almost exclusively with a keyboard. The navigational features include using the Alt key to activate mnemonic (underlined character) options in the Taskbar menus, accelerator key combinations that invoke menu items without navigating the menus, and the ability to "Tab" through the different components of a dialog screen.

Enhanced Device Discovery

MVP 10.1 provides even greater control and customization of the device discovery process. Whereas previous versions of MarkVision Professional would discover every device listed on the MarkVision Server, requiring a larger amount of time and network resources, MarkVision Professional 10.1 can perform discoveries of particular device groups



Device Discovery Profiles

based on specific discovery profiles.

Now, each device that MarkVision Professional manages is included in a discovery profile. Discovery profiles let you break down the workgroups that you use on a regular basis, letting you discover only the devices you want, when you want. Each profile can then be saved and reused or modified for future discoveries.

Device Discovery is available by selecting the Device Discovery Profiles task from the All Tasks menu, or by clicking **MarkVision → Device Discovery → Manage Discovery Profiles**.

For additional information on discovering devices with MarkVision Professional, see the Device Discovery Tech Note on the Lexmark Web site at: www.lexmark.com/publications.

Generic File Download

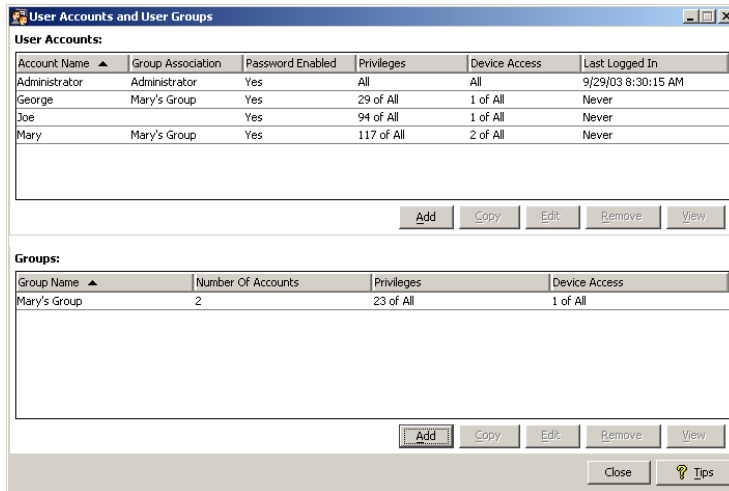
The Generic File Download task lets you download miscellaneous files from the MarkVision Server to one or multiple devices on your network. You can download various file types such as PostScript files or universal configuration files (UCF) and distribute them to the devices that MarkVision manages.

NOTE: This feature currently supports only Lexmark devices.

The Generic File Download task is available under the MarkVision Professional All Tasks menu, or by clicking **Settings → Generic File Download** on the MarkVision Professional home screen. You can also schedule the download of generic files using MarkVision's Scheduling task.

MFP Destinations Management

MVP 10.1 has the ability to create and manage different



User Accounts and User Groups Task

destination profiles for each of the functions present in a multifunction printer (MFP), such as scan, fax, and e-mail capabilities.

Each destination can be distributed to multiple devices simultaneously, eliminating the need to consistently re-enter frequently used information.

Each of the separate destinations are available under the All Tasks menu, or by clicking **Settings** → **MFP** → **Destinations** and then selecting the MFP feature you want to use.

User Accounts and User Groups

The User Accounts and User Groups tasks have now been incorporated into a single easy-to-use task that provides even greater management of user access to MarkVision Professional.

The User Accounts and User Groups task is available under the All Tasks menu, or by selecting **MarkVision** → **User Accounts and User Groups**.

Device Policy Conformance

MarkVision Professional 10.1 has the ability to display a device's current settings in comparison to its applied device policy.

When a policy is created, it can be applied to multiple devices across a network, and each device's settings are reconfigured to match the settings listed in the policy. This lets you set and maintain a standard configuration across numerous devices at one time.

The ability to check device policy conformance lets you

verify that the applied device settings are consistent with the policy, letting you identify and reset nonconforming devices quickly.

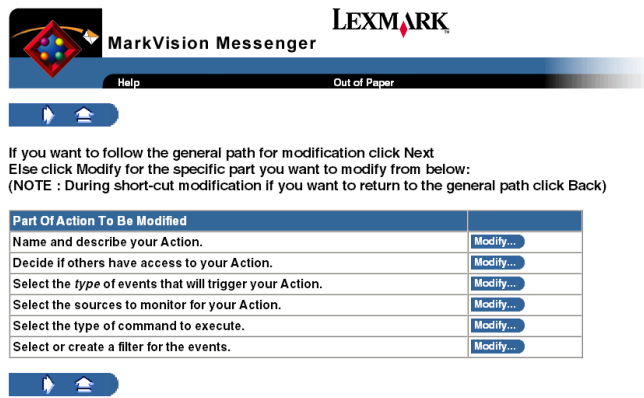
To check device policy conformance, select **Device Policies—Check Conformance** from the All Tasks list. You can also use the scheduling task to automatically apply a policy or perform a device policy conformance check.

Increased Number of Configurable Settings for Device Families

MarkVision 10.1 includes even more configurable settings for a range of device families.

The ability to control configurable device settings through MVP, coupled with MarkVision's dynamic management capabilities, provides even greater versatility and control over your network devices.

Here are the device families for which MarkVision Professional 10.1 has an increased number of configurable settings:




Action modification in MarkVision Messenger

MarkVision™ Professional 10.1

- Optra™ S
- Optra S 1255
- Optra S 1625
- Optra S 1855
- Optra S 2455
- Optra SC 1275
- Optra K 1220
- Optra Color 40
- Optra Color 45

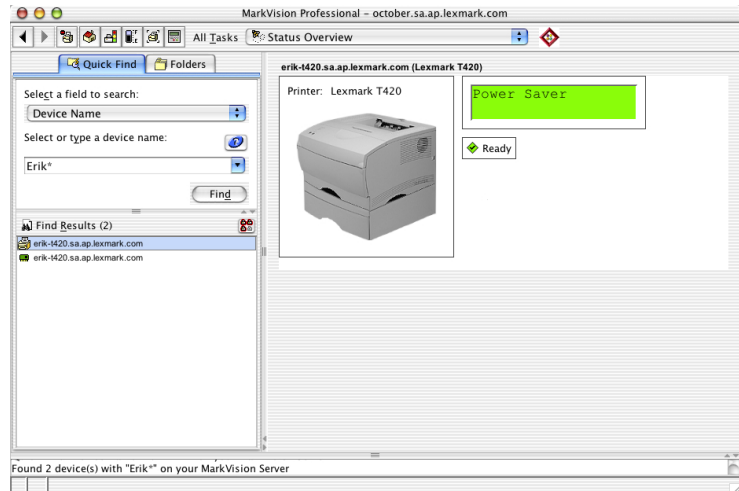
Improved Usability for MarkVision Messenger

In previous versions of MarkVision Messenger, modifying an existing action required cycling through each of the action's elements before you could make a change. MarkVision Messenger now gives you the option to jump directly to the segment of the action that you want to modify.

After you have created an action using MarkVision Messenger, if there is a specific attribute that you want to edit, click **Modify** after the action's listing on the Messenger Home screen. Then, on the modification screen, you can click the **Modify** button after the part of the action that you want to edit. If at any time you want to return to the standard modification path, click the  button.

MarkVision for Macintosh Look and Feel

MarkVision Professional 10.1 for Macintosh has been modified to emulate the look and feel of the Mac OS X operating system with greater accuracy. While maintaining the balanced accessibility of the



MarkVision Professional for Mac

traditional layout for the MarkVision Home screen, the general style of MVP's user interface now more closely resembles a Mac OS X application.

For more information on MarkVision Professional 10.1 and its features, see the MarkVision Professional *User's Guide* or visit us on the Web at www.lexmark.com.



October 2003

Lexmark, Lexmark with diamond design, MarkVision, and Optra are trademarks of Lexmark International, Inc. registered in the United States and/or other countries.

Other trademarks are the property of their respective owners.

© 2003 Lexmark International, Inc.
All rights reserved.