

Replacing the Gateway M505 Keyboard

This package includes a replacement keyboard for your Gateway M505 notebook and these printed instructions.

Tools you need

You need a small Phillips and a small flat-blade screwdriver.

Preventing static electricity discharge

The components inside your notebook are extremely sensitive to static electricity, also known as *electrostatic discharge* (ESD).

Warning



ESD can permanently damage electrostatic discharge-sensitive components in your notebook. Prevent ESD damage by following ESD guidelines every time you replace the keyboard.

Warning



To avoid exposure to dangerous electrical voltages and moving parts, turn off your notebook and unplug the power cord and modem and network cables before replacing the keyboard.

Before replacing the keyboard, follow these guidelines:

- Turn off your notebook.
- Wear a grounding wrist strap (available at most electronics stores) and attach it to a bare metal part of your workbench or other grounded connection.

Warning



To prevent risk of electric shock, do not insert any object into the vent holes of the notebook.

- Touch a bare metal surface on your workbench or other grounded object.
- Unplug the power cord and the modem and network cables.
- Remove the battery. For more information, see “Changing batteries” in your user guide.
- Disconnect all peripheral devices and remove any PC Cards.

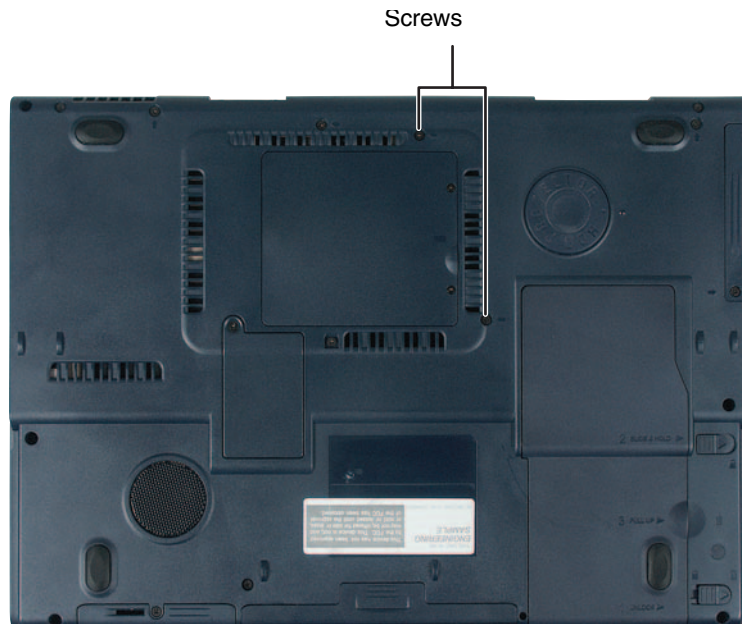
Before working with notebook components, follow these guidelines:

- Avoid static-causing surfaces such as carpeted floors, plastic, and packing foam.
- Remove components from their antistatic bags only when you are ready to use them. Do not lay components on the outside of antistatic bags because only the inside of the bags provide electrostatic protection.
- Always hold components by their edges. Avoid touching the edge connectors. Never slide components over any surface.

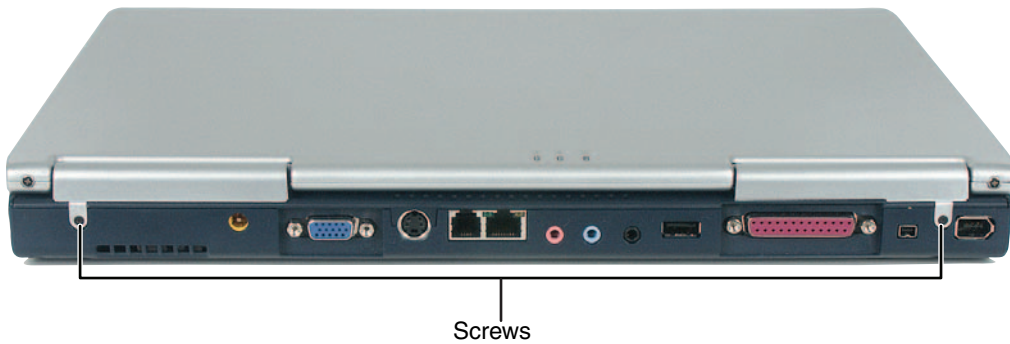


To remove the keyboard:

- 1 Follow the instructions under “Preventing static electricity discharge” on page 1.
- 2 Turn off your notebook, then unplug the AC adapter, modem and network cables.
- 3 Turn your notebook over so the bottom is facing up, then remove the battery.
- 4 Remove the two screws securing the keyboard and the keyboard cover.



- 5 Turn your notebook over so the top is facing up, then remove the hinge screws.

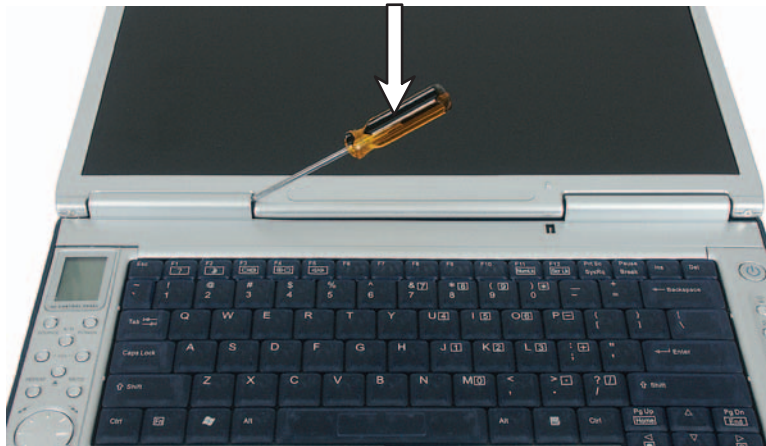


- 6 Open the LCD panel to the fully open position. **Be careful not to use too much force when opening the LCD panel.**
- 7 Insert the small flat-blade screwdriver under the edge of the hinge and gently pry up the keyboard cover.

Important



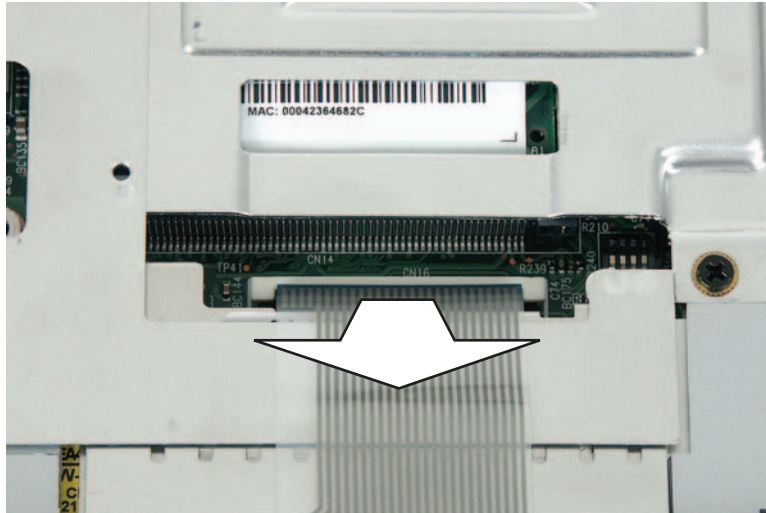
Inserting a piece of cloth between the screwdriver and keyboard and notebook case will help prevent damage to your notebook.



- 8 Pull the cover off your notebook. You will hear small snapping sounds as the cover comes away from your notebook. Be careful not to break off the tabs found on the front of the cover.
- 9 Lift the back edge of the keyboard, then slowly rotate it toward you so it lies keys-down on top of your notebook. **Be careful not to damage the LCD panel.**



- 10 Carefully insert the small flat-blade screwdriver between the keyboard cable and the black plastic hinge where the cable connects to the system board. Gently lift the hinge off the cable. The cable is now free and you can remove the keyboard.



 **To install the keyboard:**

- 1 Place the new keyboard **keys-down** on your notebook with the space bar away from you.
- 2 Verify the black plastic hinge on the system board keyboard connector is in the raised position.
- 3 Insert the end of the keyboard cable between the black plastic hinge and the white connector.

Important



The plug is correctly oriented if the cable is not twisted.

- 4 Press the black plastic hinge onto the keyboard cable.
- 5 Rotate the keyboard toward the LCD panel until the keyboard is almost face-up.

- 6 Insert the tabs on the front of the keyboard under the palm rest.



Tabs

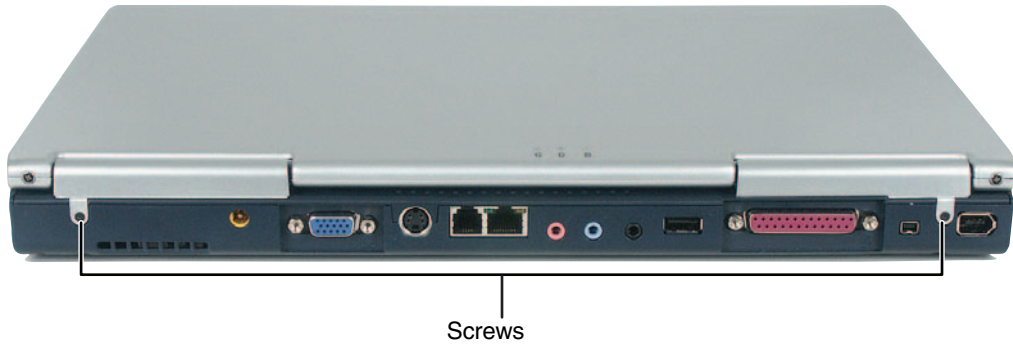
- 7 Gently press the keyboard down until it is flat. The keyboard should easily fall into place. **Be careful not to damage the LCD panel.**
- 8 Slide the front keyboard cover tabs under your notebook frame and align the hinges. Press down on the cover in several places until it clicks in place.

Warning



If the cover is not correctly replaced, your notebook could be damaged when you try to close the LCD panel.

- 9 Close the LCD panel and turn your notebook so the back is facing you.
- 10 Install the hinge screws.



- 11** Turn your notebook over so the bottom is facing up, then install the two screws securing the keyboard and the keyboard cover.



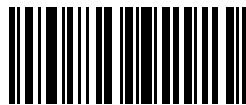
- 12** Replace the battery, connect the power adapter and modem and network cables, then turn on your notebook.



See your user's guide for important technical support, safety, regulatory, and legal information.

© 2003 Gateway, Inc. All rights reserved. Gateway, Gateway Country, the Gateway stylized logo, and the black-and-white spot design are trademarks or registered trademarks of Gateway, Inc. in the United States and other countries. All other brands and product names are trademarks or registered trademarks of their respective companies.

MAN RPL M505 KB INST R0 10/03



8509520