

# Replacing the Gateway M520 Keyboard

This package includes a replacement keyboard for your Gateway M520 notebook and these printed instructions.

## Tools you need

You need a small Phillips and a small flat-blade screwdriver to replace the keyboard.

## Preventing static electricity discharge

The components inside your notebook are extremely sensitive to static electricity, also known as *electrostatic discharge* (ESD).

### Warning



To avoid exposure to dangerous electrical voltages and moving parts, turn off your notebook and unplug the power cord and modem and network cables before opening the case.

### Caution



ESD can permanently damage electrostatic discharge-sensitive components in your notebook. Prevent ESD damage by following ESD guidelines every time you replace the keyboard.

Before replacing the keyboard, follow these guidelines:

- Turn off your notebook.
- Wear a grounding wrist strap (available at most electronics stores) and attach it to a bare metal part of your workbench or other grounded connection.

### Warning



To prevent risk of electric shock, do not insert any object into the vent holes of your notebook.

- Touch a bare metal surface on your workbench or other grounded object.
- Unplug the power cord and the modem and network cables.
- Remove the battery. For more information, see “Changing batteries” in your user guide.
- Disconnect all peripheral devices and remove any PC Cards.

Thank you for purchasing this Factory Service Manual CD/DVD from [servicemanuals4u.com](http://servicemanuals4u.com).

Please check out our eBay auctions for more great deals on Factory Service Manuals:

[servicemanuals4u](http://servicemanuals4u)

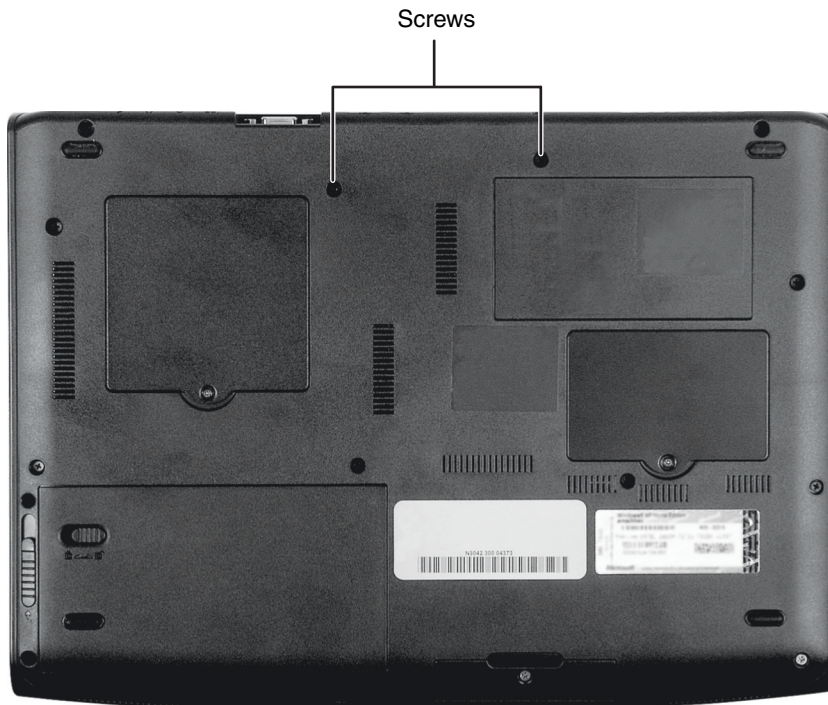
Before working with notebook components, follow these guidelines:

- Avoid static-causing surfaces such as carpeted floors, plastic, and packing foam.
- Remove components from their antistatic bags only when you are ready to use them. Do not lay components on the outside of antistatic bags because only the inside of the bags provide electrostatic protection.
- Always hold components by their edges. Avoid touching the edge connectors. Never slide components over any surface.

# Removing the keyboard

## ▶ To remove the keyboard:

- 1 Follow the instructions under “Preventing static electricity discharge” on page 1.
- 2 Turn off your notebook.
- 3 Disconnect the AC adapter and modem and network cables.
- 4 Turn your notebook over so the bottom is facing up.
- 5 Remove the battery. For more information, see “Changing batteries” in your user guide.
- 6 With a small Phillips screwdriver, remove the two keyboard bezel screws and put them in a safe place.



- 7 Turn your notebook over so the top is facing up.
- 8 Open the LCD panel to the fully opened position so it lies flat on your workbench.

- 9 Insert the small flat-blade screwdriver under the center of the keyboard bezel and gently pry it up.

**Important**



Inserting a piece of cloth between the screwdriver and keyboard and notebook case will help prevent damage to your notebook.



- 10 Lift the back edge of the keyboard bezel, then slowly rotate it toward you so it lies face-down on top of your notebook. You may hear small snapping sounds as the bezel comes away from your notebook.

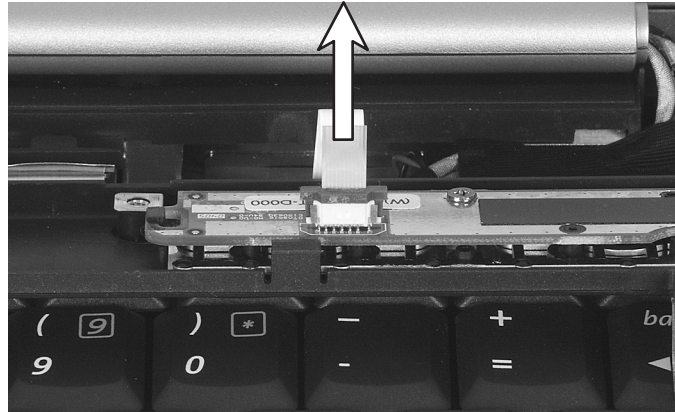
**Caution**



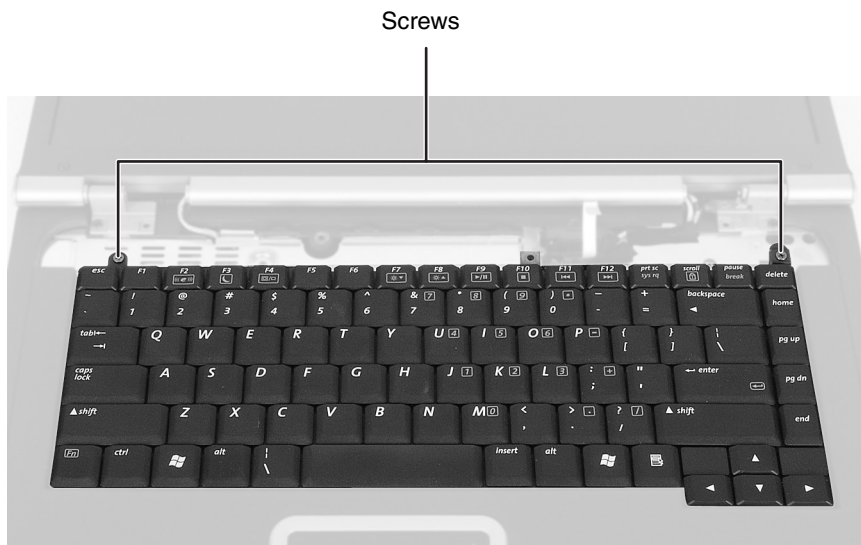
When removing the bezel, be careful not to break off the tabs along the edges of the bezel.



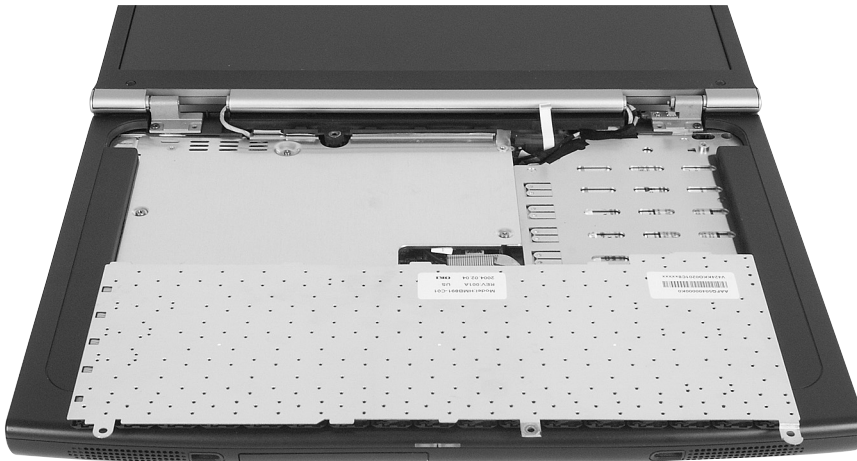
- 11** Lift the keyboard bezel connector using two fingers and remove the keyboard bezel from the notebook.



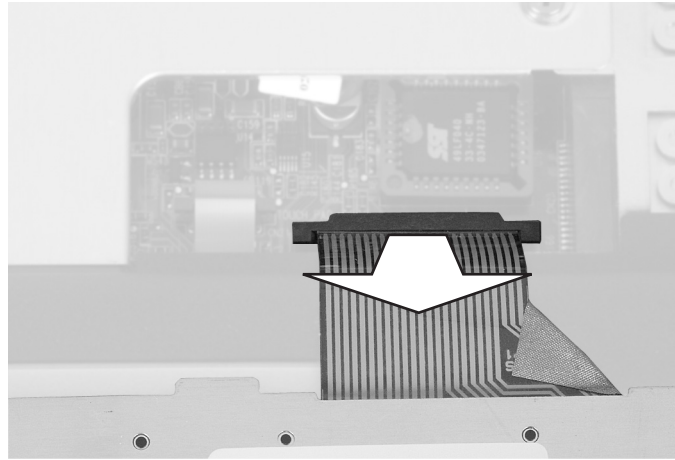
- 12** With a small Phillips screwdriver, remove the two keyboard screws and put them in a safe place.



- 13** Lift the back edge of the keyboard, then slowly rotate it toward you so it lies keys-down on top of your notebook. Be careful not to damage the LCD panel.



- 14** Lift the keyboard connector using two fingers and remove the keyboard cable. Be careful not to touch or damage any other components.





# Installing the keyboard

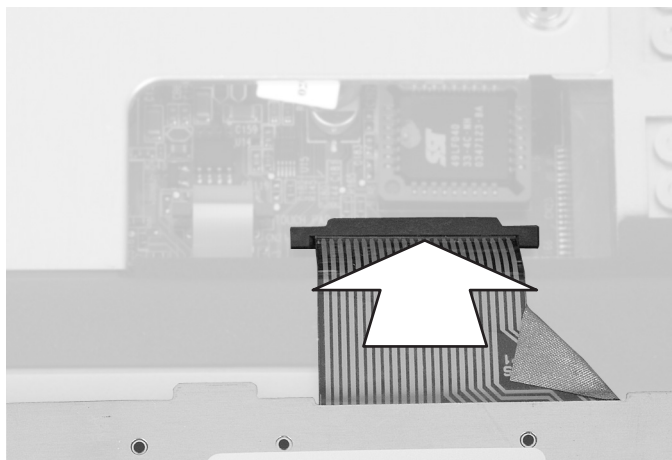
## ▶ To install the keyboard:

- 1 Place the new keyboard **keys-down** on your notebook with the space bar away from you.
- 2 Insert the keyboard plug, on the end of the keyboard cable, onto the keyboard connector.

### Important

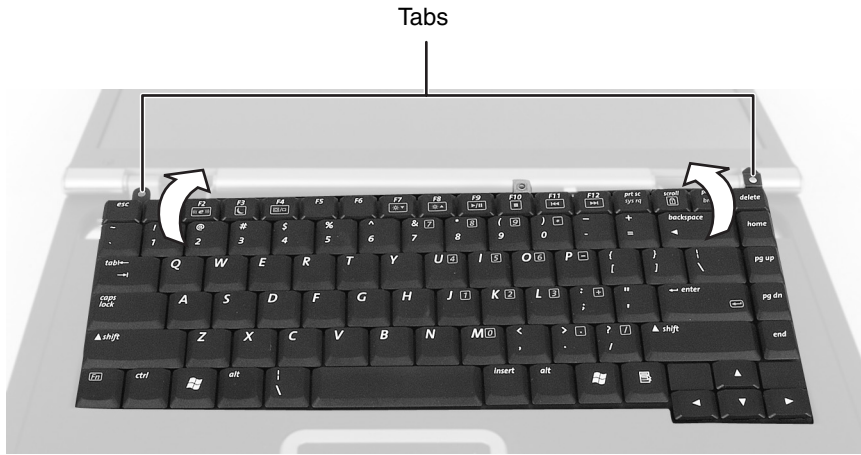


The outside of the keyboard plug goes around the keyboard connector. The plug is correctly oriented if the cable is not twisted.

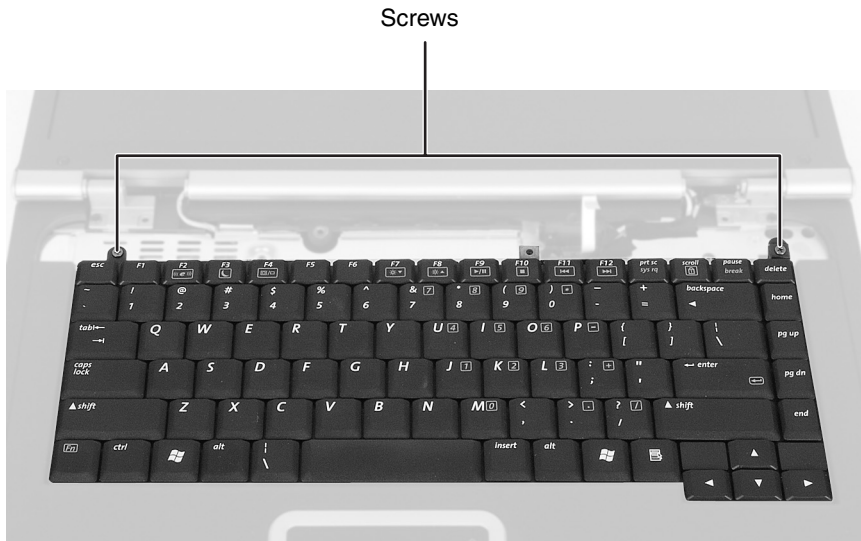


- 3 Rotate the keyboard toward the LCD panel until the keyboard is almost face-up.

- 4** Insert the tabs on the back edge of the keyboard into the corresponding slots along the top of the keyboard tray area.



- 5** Gently press the keyboard down until it is flat all the way across. The keyboard should easily fall into place. Be careful not to damage the LCD panel.
- 6** Replace the two keyboard screws.



- 7 Replace the keyboard bezel. Press down on the bezel in several places until it clicks in place.

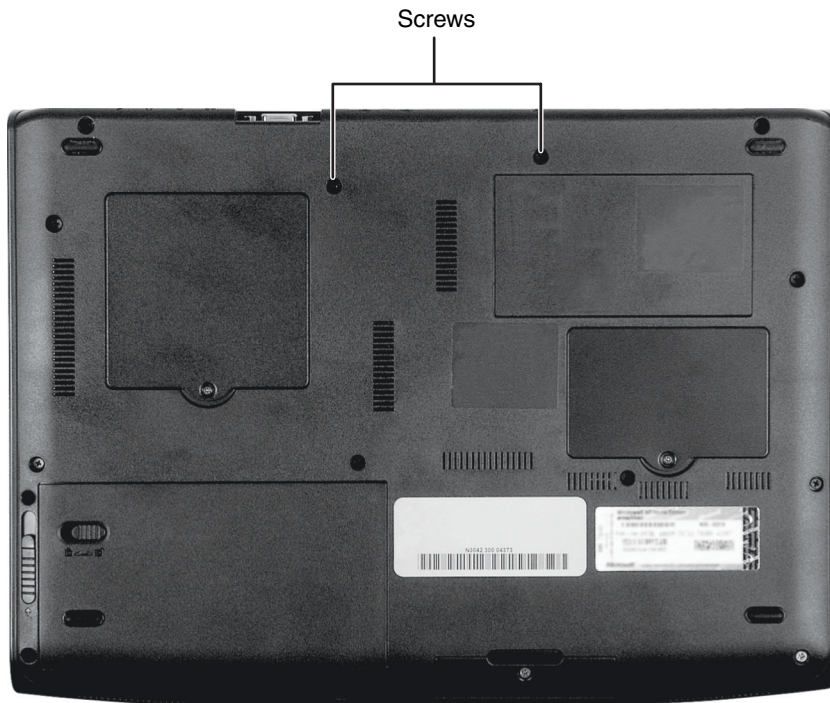
The bezel is correctly mounted when you can run your finger along the bezel and find no loose spots. The bezel should be flat all the way across.

**Caution**



If the bezel is not correctly replaced, your notebook could be damaged when you try to close the LCD panel.

- 8 Close the LCD panel, then turn your notebook over so the bottom is facing up.
- 9 Replace the two keyboard bezel screws.



- 10 Install the battery.
- 11 Connect the power adapter and modem and network cables, then turn on your notebook.



## **Technical Support**

See your user's guide for Gateway Technical Support information.

## **Safety, Regulatory, and Legal Information**

See your user's guide for important safety, regulatory, and legal information.

© 2004 Gateway, Inc. All rights reserved. Gateway, Gateway Country, the Gateway stylized logo, and the black-and-white spot design are trademarks or registered trademarks of Gateway, Inc. in the United States and other countries. All other brands and product names are trademarks or registered trademarks of their respective companies.



MAN M520 RPL KBD INST GDE R0 6/04

