

Replacing the Solo 9500 Keyboard

This package includes a replacement keyboard for your Solo 9500 notebook computer and these printed instructions.

Tools you need

You will need a small Phillips and a small flat blade screwdriver to replace the keyboard.

Preventing static electricity discharge

The components inside your notebook are extremely sensitive to static electricity, also known as *electrostatic discharge* (ESD).

Caution



ESD can permanently damage electrostatic discharge sensitive components in the notebook. Prevent ESD damage by following ESD guidelines every time you open the notebook case.

Before opening the notebook case, follow these guidelines:

- Turn off the notebook power.
- Wear a grounding wrist strap (available at most electronics stores) and attach it to a bare metal part on the back of the notebook.
- Touch a bare metal surface on the back of the notebook.
- Unplug the AC adapter and modem cable.
- Remove the battery.

Before working with notebook components, follow these guidelines:

- Avoid static-causing surfaces such as carpeted floors, plastic, and packing foam.
- Remove the keyboard from its antistatic bag only when you are ready to use it. Do not lay the keyboard on the outside of the antistatic bag because only the inside of the bag provides electrostatic protection.

Thank you for purchasing this Factory Service Manual CD/DVD from servicemanuals4u.com.

Please check out our eBay auctions for more great deals on Factory Service Manuals:

servicemanuals4u

Removing the keyboard



To remove the keyboard:

- 1 Follow the guidelines under “Preventing static electricity discharge” on page 1.
- 2 Shut down your notebook, then remove the battery and unplug the AC adapter.

Warning

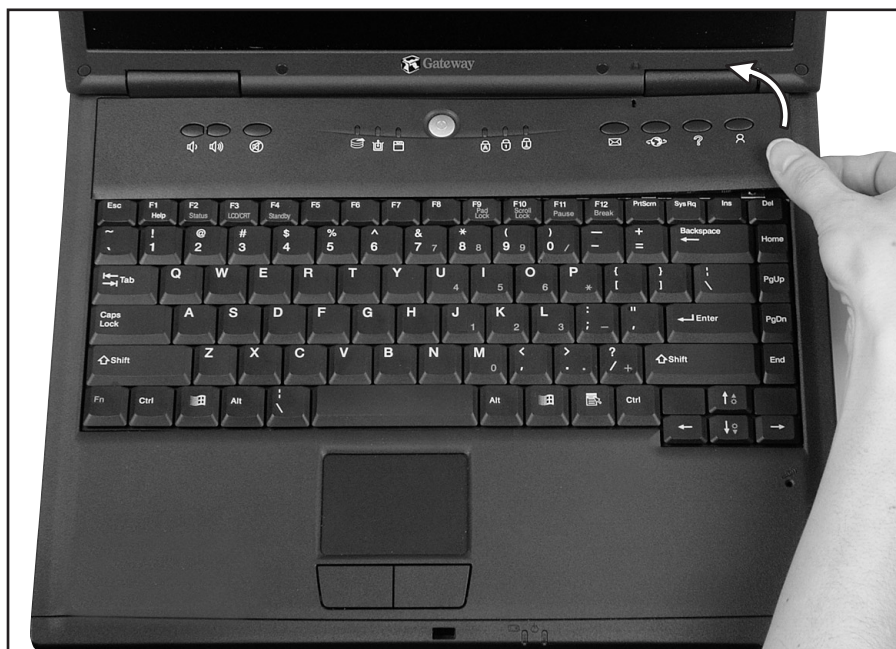


To avoid injury, disconnect the AC adapter and modem cable before removing the keyboard. Replace the keyboard before reconnecting power.

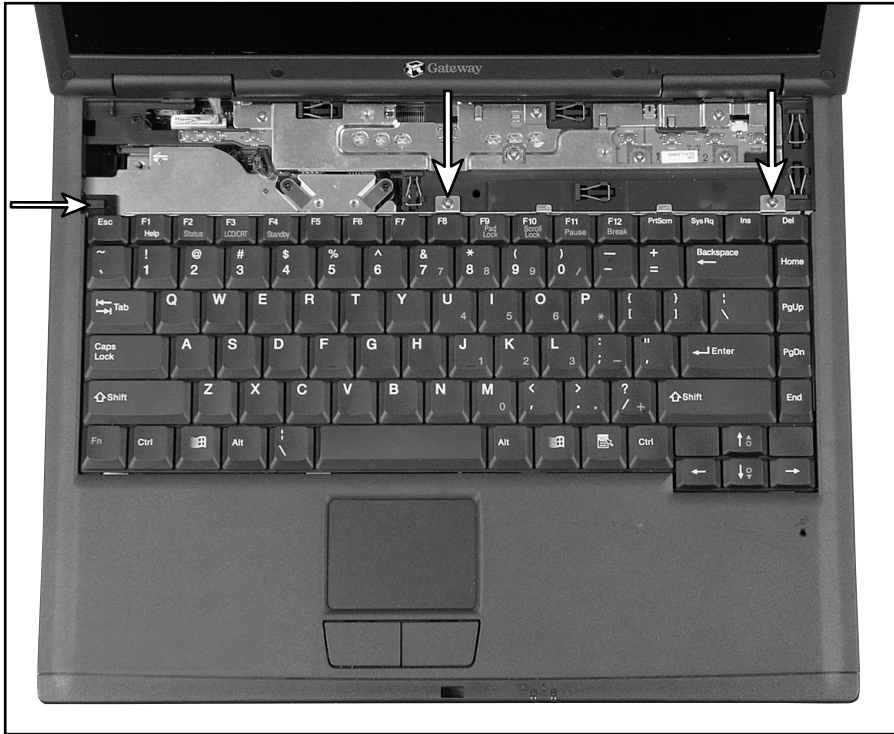
- 3 Open the LCD panel to the normal viewing position.
- 4 Insert the small flat blade screwdriver under the bottom right corner of the keyboard bezel and pry it up.



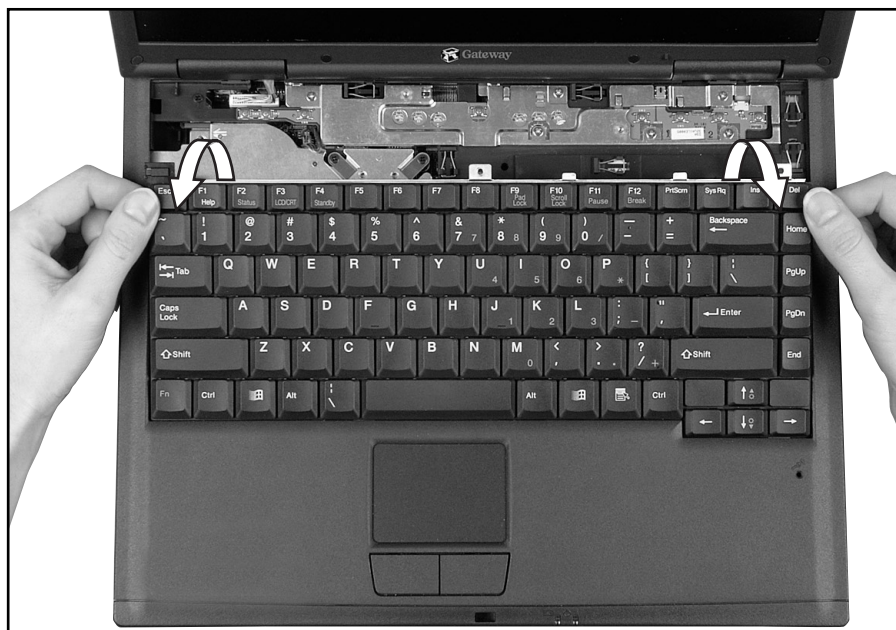
- 5 Pull the bezel off the notebook. You will hear small snapping sounds as the bezel comes away from the notebook. Be careful to not break off the tabs found on the left end of the bezel.



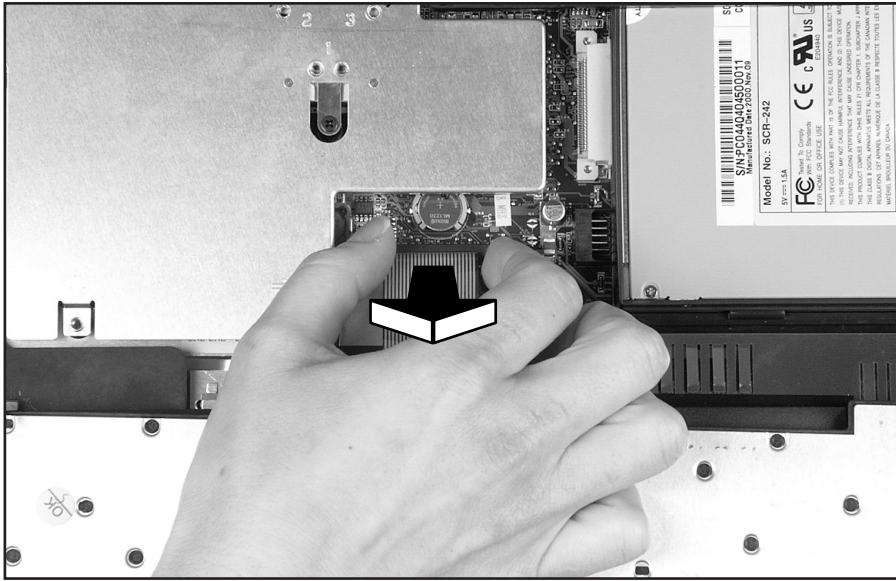
- 6 Push the slide tab, found above the ESC key, to the right.
- 7 With a small Phillips screwdriver, remove the two keyboard screws (found above the F8 and DEL keys) and place them in a safe place.



- 8 Remove the keyboard by raising the back edge, then slowly rotating it toward you so it lies **keys-down** on top of the notebook. Be careful to not damage the LCD panel.



- 9 Disconnect the keyboard by lifting the keyboard connector using two fingers. Be careful to not touch or damage any other components.



Installing the keyboard



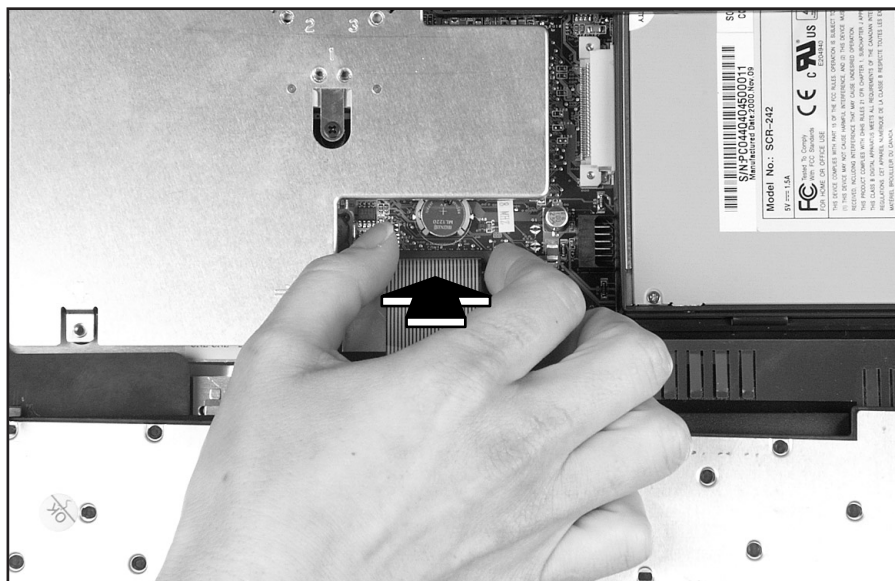
To install the new keyboard:

- 1 Place the new keyboard **keys-down** on the notebook with the space bar away from you.
- 2 Insert the keyboard plug, found on the end of the keyboard cable, onto the keyboard connector.

Important

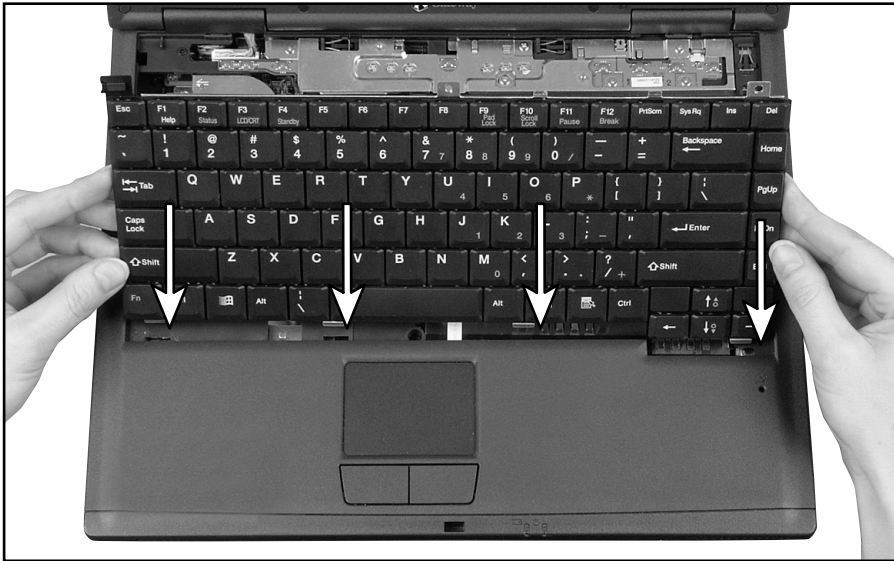


The outside of the keyboard plug goes around the keyboard connector. The plug is correctly oriented if the cable is not twisted.



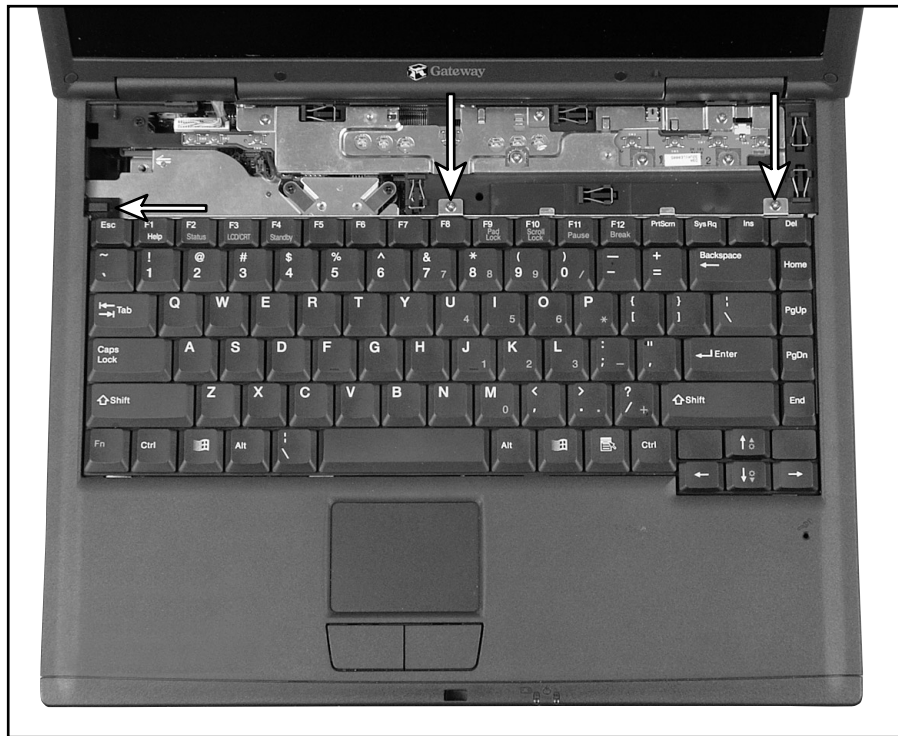
- 3 Rotate the keyboard toward the LCD panel until the keyboard is almost face-up.

- 4 Insert the front of the keyboard under the palm rest.



- 5 Gently press the keyboard down until it is flat all the way across. The keyboard should easily fall into place. Be careful to not damage the LCD panel.

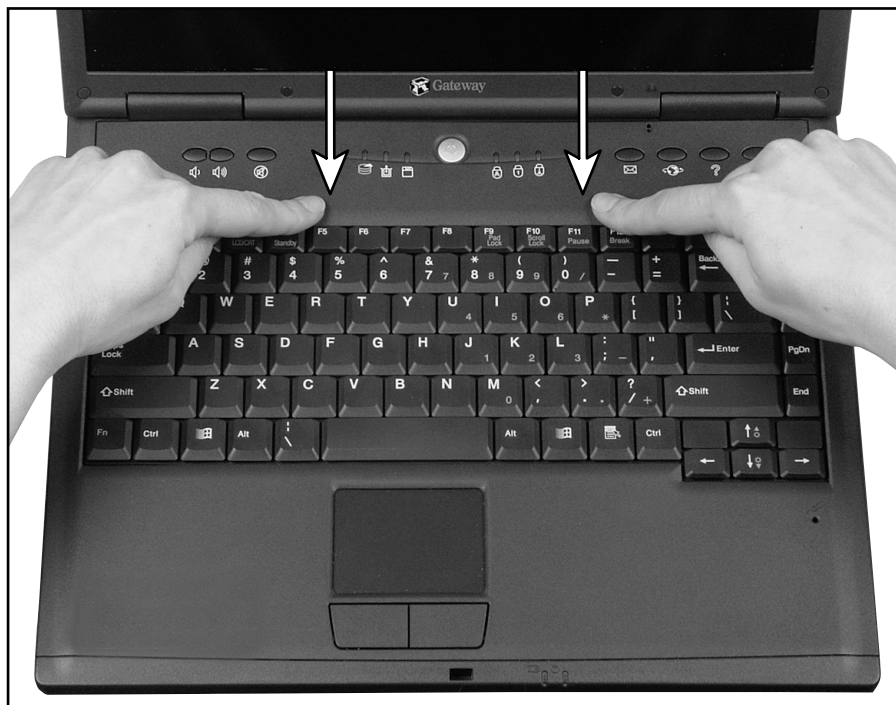
- 6 Replace the two keyboard screws (above the F8 and DEL keys).
- 7 Push the slide tab, found above the ESC key, to the left.



- 8 Slide the two tabs found on the left end of the bezel under the notebook frame.



- 9 Press down on the bezel in several places until it clicks in place.



The bezel is correctly mounted when you can run your finger along the bezel and find no loose spots. The bezel should be flat all the way across. If the bezel is mounted incorrectly, complete the instructions under “Replacing the bezel” on page 12.

Warning



If the bezel is not correctly replaced, your notebook could be damaged when you try to close the LCD panel.

- 10 Replace the battery and plug in the AC adapter.

- 11 Turn on the notebook.



Replacing the bezel

If the bezel was mounted incorrectly, complete the following procedure.

Warning



If the bezel is not correctly replaced, your notebook could be damaged when you try to close the LCD panel.



To replace the bezel:

- 1** Insert the small flat blade screwdriver under the bottom right corner of the keyboard bezel and pry up.
- 2** Pull the bezel off the notebook. You will hear small snapping sounds as the bezel comes away from the notebook. Be careful to not break off the tabs found on the left end of the bezel.
- 3** Slide the two tabs found on the left end of the bezel under the notebook frame and press down on the bezel in several places until it clicks in place.



MAN SYS US SL9500 KB UPD R0



8507739