

### 3. Driver Installation

#### Introduction

There are motherboard drivers and utilities included in ACORP Bonus CD disc. You don't need to install all of them in order to boot your system. But after you finish the hardware installation, you have to install your operation system first (such as windows 98) before you can install any drivers or utilities. Please refer to your operation system installation guide.

**Note:** Please follow recommended procedure to install Windows ME and Windows 98.

#### 3.1 Auto-run Menu

You can use the auto-run menu of Bonus CD disc.  
Choose the utility or driver and select model name.



## 3.2 Installing Intel INF Driver

This item install the Intel Chipset Software installation Utility that enables Plug-n-Play INF support for Intel chipset components. This utility installs to the target system the Windows INF files that outline to the operating system how the chipset components will be configured.



(1)

Click "Driver" Item.



(2)

Click "Chipset" Item.

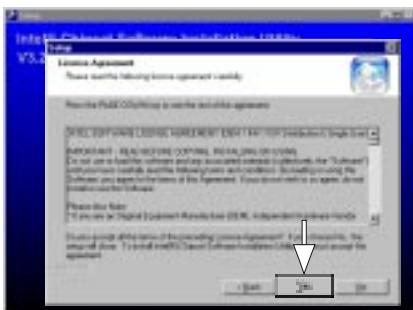


(3)

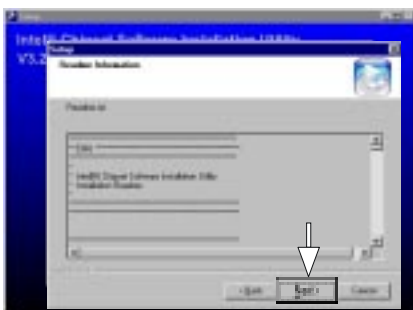
Click "Intel Chipsets Installation" Item.



(4)  
Click "Next".



(5)  
Click "Yes".



(6)  
Click "Next".



**(7)**  
**Click "Finish".**

**Note:**

**Install the Intel INF Driver before installing the Intel Application Accelerator Driver.**

### 3.3 Installing Application Accelerator Driver

This item install the Intel Application Accelerator for Microsoft Windows 98/98SE/ME/NT4.0/2000/XP. This program is designed to improve performance of the storage sub-system and overall system performance.

**We recommend that:**

**If your operating system are Windows 98/98SE/NT4.0, please install the Ultra Driver. Besides, take note of the IAA and Ultra Driver can't using at the same time.**



(1)  
Click "Driver" Item.



(2)

Click "Chipset" Item.



(3)

Click "Intel Application Accelerator/Ultra ATA Storage Driver" Item.

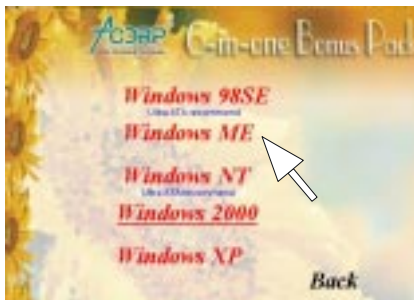


(4)

If you choose "Windows 98SE/NT" then you will install Ultra ATA Driver.



(5)

(6)  
Click "OK".(7)  
If you choose "Windows  
ME/XP/2000" then you  
will install Intel  
Application Accelerator  
Driver.



(8)

(9)  
Click "Finish".(10)  
Click "OK".

### 3.4 Installing VGA Driver

**(Only support by 6A815E1 motherboard)**

Intel 815e chipset integrated a 2D/3D graphics acceleration.



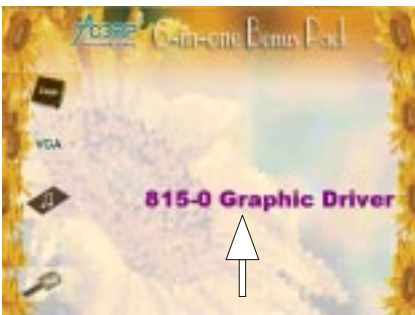
(1)

Click "Driver" Item.



(2)

Click "VGA" Item.



(3)

Click  
"815-0 Graphic Driver"  
Item.





(4)  
Click "Next".



(5)  
Click "Yes".

### 3.5 Installing Audio Driver

This motherboard comes with an AC97 CODEC and the sound controller is in Intel South Bridge chipset. This item install the Intel Audio for Microsoft Windows 98SE/ME/NT4.0/2000/XP.



(1)  
Click  
"Driver" Item.



(2)  
Click "Audio" Item.



(3)  
Click "ALC100" Item.



(4)  
For Win NT  
, Win 2000, WinXP  
& Win 9X\_ME system.  
Select your O.S. system.



(5)  
Click "Next".



(6)  
Click "Finish".