

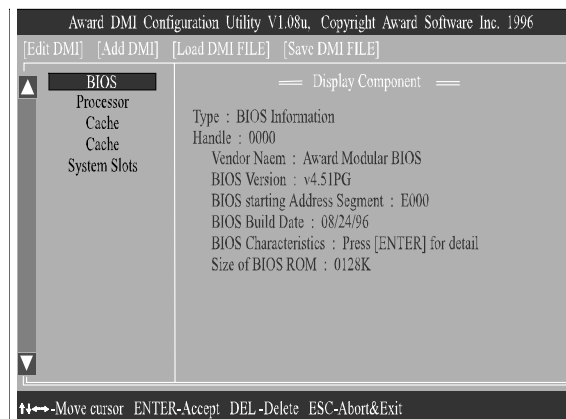
## DMI Utility

DMI (Desktop Management Interface) is a standard for organizing system configuration information. Using DMI, computer configuration can be made much simpler, quicker, and easier. Computer system configuration information can be read and modified from remote locations, permitting remote configuration and boot up. The utility is contained in a 3.5" diskette. Two files, DMICFG.EXE and README.TXT, are included. The DMICFG.EXE must be run in real mode. The README.TXT records the version of DMICFG.EXE.

### NOTE :

1. Duplicate the original diskette and use the backup one.
2. End users are not encouraged to update DMI information. Please contact your vendor for details.

### Starting DMI Utility



Type **DMICFG** under DOS to run the DMI utility. A menu like the figure above will appear in your monitor. It provides record data about your computer system.

**This Page Intentionally Left Blank**