

NF18GFC

USER'S MANUAL

M/B For Socket-A Athlon/Duron Processor

NO. G03-NF18GFC1A

Release date: September 2003

Trademark:

- * Specifications and Information contained in this documentation are furnished for information use only, and are subject to change at any time without notice, and should not be construed as a commitment by manufacturer.

TABLE OF CONTENT

USER'S NOTICE	i
MANUAL REVISION INFORMATION	i
COOLING SOLUTIONS	i
CHAPTER 1 INTRODUCTION OF NF18GFC MOTHERBOARD	
1-1 FEATURE OF MOTHERBOARD.....	1
1-2 SPECIFICATION	2
1-3 PERFORMANCE LIST	3
1-4 LAYOUT DIAGRAM & JUMPER SETTING	4
CHAPTER 2 HARDWARE INSTALLATION	
2-1 HARDWARE INSTALLATION STEPS.....	6
2-2 CHECKING MOTHERBOARD'S JUMPER SETTING.....	6
2-3 INSTALL CPU	7
2-3-1 GLOSSARY	7
2-3-2 ABOUT AMD ATHLON & DURON 462-PIN CPU.....	8
2-4 INSTALL MEMORY	9
2-5 EXPANSION CARD	10
2-5-1 PROCEDURE FOR EXPANSION CARD INSTALLATION	10
2-5-2 ASSIGNING IRQ FOR EXPANSION CARD	10
2-5-3 INTERRUPT REQUEST TABLE FOR THIS MOTHERBOARD.....	11
2-5-4 AGP SLOT	11
2-6 CONNECTORS, HEADERS.....	11
2-6-1 CONNECTORS	11
2-6-2 HEADERS	14
2-7 STARTING UP YOUR COMPUTER.....	18
CHAPTER 3 INTRODUCING BIOS	
3-1 ENTERING SETUP	19
3-2 GETTING HELP.....	19
3-3 THE MAIN MENU	20
3-4 STANDARD CMOS FEATURES.....	21
3-5 ADVANCED BIOS FEATURES	22
3-6 ADVANCED CHIPSET FEATURES	24
3-7 INTEGRATED PERIPHERALS.....	25
3-7-1 ONCHIP IDE FUNCTION.....	26
3-7-2 ONCHIP DEVICE FUNCTION	27
3-7-3 ONCHIP SUPER IO FUNCTION	27
3-8 POWER MANAGEMENT SETUP	28
3-9 PNP/PCI CONFIGURATION SETUP	29
3-9-1 IRQ RESOURCES	30
3-10 PC HEALTH STATUS.....	31
3-11 MISCELLANEOUS CONTROL.....	32
3-12 LOAD STANDARD/OPTIMIZED DEFAULTS	33
3-13 SET SUPERVISOR/USER PASSWORD.....	33
CHAPTER 4 DRIVER & FREE PROGRAM INSTALLATION	
MAGIC INSTALL SUPPORTS WINDOWS 9X/NT/2K/XP	34
4-1 NFORCE INSTALL NVIDIA NFORCE PACK DRIVER	35
4-2 VGA INSTALL NVIDIA VGA DRIVER.....	36
4-3 SOUND INSTALL DOLBY DIGITAL 5.1 RTCE DRIVER	36
4-4 USB 2.0 INSTALL NVIDIA USB 2.0 DEVICE DRIVER	38
4-5 PC-CILLIN INSTALL PC-CILLIN2002 ANTI-VIRUS PROGRAM.....	38
4-6 PC-HEALTH INSTALL NFORCE2 HARDWARE DOCTOR UTILITY.....	40
4-7 MAGIC BIOS INSTALL BIOS LIVE UPDATE UTILITY	40
4-8 AUDIO RACK INSTALL C-MEDIA AUDIO RACK UTILITY	42
4-9 HOW TO UPDATE BIOS	43

USER'S NOTICE

COPYRIGHT OF THIS MANUAL BELONGS TO **THE MANUFACTURER**. NO PART OF THIS MANUAL, INCLUDING THE PRODUCTS AND SOFTWARE DESCRIBED IN IT MAY BE REPRODUCED, TRANSMITTED OR TRANSLATED INTO ANY LANGUAGE IN ANY FORM OR BY ANY MEANS WITHOUT WRITTEN PERMISSION OF **THE MANUFACTURER**.

THIS MANUAL CONTAINS ALL INFORMATION REQUIRED TO USE NF18GFC MOTHER-BOARD AND WE DO ASSURE THIS MANUAL MEETS USER'S REQUIREMENT BUT WILL CHANGE, CORRECT ANY TIME WITHOUT NOTICE. **MANUFACTURER** PROVIDES THIS MANUAL "AS IS" WITHOUT WARRANTY OF ANY KIND, AND WILL NOT BE LIABLE FOR ANY INDIRECT, SPECIAL, INCIDENTAL OR CONSEQUENTIAL DAMAGES (INCLUDING DAMAGES FOR LOSS OF PROFIT, LOSS OF BUSINESS, LOSS OF USE OF DATA, INTERRUPTION OF BUSINESS AND THE LIKE).

PRODUCTS AND CORPORATE NAMES APPEARING IN THIS MANUAL MAY OR MAY NOT BE REGISTERED TRADEMARKS OR COPYRIGHTS OF THEIR RESPECTIVE COMPANIES, AND THEY ARE USED ONLY FOR IDENTIFICATION OR EXPLANATION AND TO THE OWNER'S BENEFIT, WITHOUT INTENT TO INFRINGE.

Manual Revision Information

Reversion	Revision History	Date
1.0	First Release	September 2003

Item Checklist

- ☒ NF18GFC Motherboard
- ☒ Cable for IDE/Floppy
- ☒ CD for motherboard utilities
- ☐ Cable for USB Port 3/4 (Option)
- ☒ Cable for 1394 Ports (Option)
- ☒ SPDIF-IN/SPDIF-OUT Adaptor
- ☒ VGA Port 2 Bracket (Option)
- ☒ NF18GFC User's Manual

AMD Athlon™ / Duron™ Processor Family

Cooling Solutions

As processor technology pushes to faster speeds and higher performance, thermal management becomes increasingly crucial when building computer systems. Maintaining the proper thermal environment is key to reliable, long-term system operation. The overall goal in providing the proper thermal environment is keeping the processor below its specified maximum case temperature. Heatsinks induce improved processor heat dissipation through increased surface area and concentrated airflow from attached fans. In addition, interface materials allow effective transfers of heat from the processor to the heatsink. For optimum heat transfer, AMD recommends the use of thermal grease and mounting clips to attach the heatsink to the processor.

When selecting a thermal solution for your system, please refer to the website below for collection of heatsinks evaluated and recommended by AMD for use with AMD processors. Note, those heatsinks are recommended for maintaining the specified Maximum T case requirement. In addition, this collection is not intended to be a comprehensive listing of all heatsinks that support AMD processors.

For vendor list of heatsink and fan, please visit :

<http://www1.amd.com/products/duron/thermals>

<http://www1.amd.com/products/athlon/thermals>

Chapter 1

Introduction of NF18GFC Motherboard

1-1 Feature of motherboard

The NF18GFC motherboard is design for use AMD Athlon/Duron/Athlon XP 200MHz/266MHz/333MHz (Double Data Rate) Front Side Bus Frequency CPU, which utilize the Socket-A design.

NF18GFC motherboard use the newest nVIDIA nForce2 IGP north bridge chipset, integrated GeForce4 MX series Graphics Processing Unit and TV encoder. Support DDR 266/333 with internal graphic core. NF18GFC whose 266MHz/333MHz (Double Data Rate) Front Side Bus frequency and 333MHz memory interface delivers a clear upgrade path to the future generation of 266MHz/333MHz processors and DDR266/DDR333 DDR SDRAM. The motherboard provided two 184-pin DDR DIMMs support PC2700/PC2100 DDR SDRAMs maximum size up to 2GB. Supports both 64-bit and 128-bit (Dual Channel) DDR SDRAM. For those wanting even greater graphic performance, an AGP 4X/8X slot is included on the board. Compliant with AGP 3.0 8x interface at 533MHz.

The NF18GFC motherboard use nVIDIA nForce2 MCP south bridge offers ULTRA ATA 66/100/**133** to provide speedier HDD throughout that boosts overall system performance.

The motherboard adopts the C-Media CMI 9761+AC3 channel controllers, 96 KHz/24 bits sampling rate, AC'97 2.3 compliant audio codec. Together with the built-in Dolby® Digital Real-Time Content Encoder (RTCE) and the Xear 3D™ 5.1 Virtual SPEAKER SHIFTER sound technology, it delivers excellent audio quality (SNR>95dB), Home Theater acoustics experience, 5.1CH audio, highly immersive 3D gaming environmental (27 types) effects, versatile Equalizer mode selection, Sensaura® CRL3D™ HRTF 3D positional sound, premium-quality DVD-Audio, single digital S/PDIF link, and flexible wire connection to now-a-day's demanding multimedia desktops and media center requirement.

The motherboard including PCI LAN Controller chip support 10/100 Mb/sec Base transfer rate for network. The NF18GFC including the 1394 PCI controller provided 100M/200M/400Mb bandwidth support two 1394 device port, which compliant with IEEE 1394A-2000 standard. With USB control as well as capability of expanding to 6 USB function ports support USB2.0/USB1.1 Devices, the NF18GFC meet future USB demand.

A special design in hardware for protecting Athlon XP CPU from burned, the system will auto shutdown power supply when CPU is overheat, or the CPU FAN is stop. The motherboard has built-in hardware monitor function for change CPUFAN/SYSFAN speed. This function will increase FAN speed in high temperature and decrease FAN speed in low temperature for power consumption and reduce the noise. This will monitor and protect your computer.

In NF18GFC we design in CPU Vcore Voltage, DDR memory 2.5V Voltage, AGP 1.5V Voltage those can minor adjustable in BIOS setup. This design can let users approach over clock demand and also can make system more stable. The NF18GFC motherboard provides special function in BIOS Setup to setting CPU Host clock let users to approach over clocking, and special design in hardware to protect BIOS from virus crash BIOS data.

NF18GFC provides high performance & meets future specification demand. It is really wise choice for your computer.

1-2 Specification

Spec	Description
Design	* Mini ATX form factor 4 layers PCB size: 17.5x24.5cm
Chipset	* nVIDIA nForce2 Integrated Graphics Processor (IGP) north bridge * nVIDIA nForce2 Media and Communications Processor (MCP) south bridge
CPU Socket	* Support AMD Athlon 1.1GHz~1.4GHz processor * Support AMD Duron 900MHz~1.3GHz processor * Support AMD Athlon XP1500+~XP3000+ processor * Support 200MHz/266MHz/333MHz (Double Data Rate) Front Side Bus frequency processors * Reserves support for future AMD Athlon XP processors
Memory Socket (Dual Channel)	* 184-pin DDR module socket x2 * Support DDR266/DDR333 DDR SDRAM * Support both 64-bit and 128-bit (Dual Channel) DDR SDRAM * Expandable to 2.0GB
Expansion Slot & Headers	* AGP slot x1 support AGP 3.0 & 4X/8X mode * 32-bit PCI slot x1
Integrate IDE	* Two PCI IDE controllers support PCI Bus Mastering, ATA PIO/DMA and the ULTRA DMA 33/66/100/133 functions that deliver the data transfer rate up to 133 MB/s
TV-Out/Secondary CRT (Bracket Option)	* Integrated TV-out encoder or Secondary through external bracket * Provided S-Video and RCA composite connector * External bracket optional
1394 Port	* VIA VT6307S IEEE 1394 controller provided two 1394 device ports support 100/200/400Mb bandwidth * Compliant with IEEE 1394A-2000 standard
6 channel Audio	* C-Media CM9761+AC3 6 channel Audio controller, 96 KHz/24 bits, AC97' CODEC * Audio driver and utility support of Dolby Digital 5.1 RTCE and Xear 3D sound technology 5.1 Virtual SPEAKER SHIFTER * Sensaura® CRL3D™ HRTF 3D positional sound and enhancement * Support Creative EAX, Microsoft DirectSound 3D, A3D for realistic PC game playing
FAN Speed Control	* Auto switch CPU/SYSTEM FAN speed when smart mode enabled in BIOS Setup. For reduce the noise and saving power
BIOS	* Award 2MBit Flash ROM
Multi I/O	* PS/2 keyboard and PS/2 mouse connectors * Floppy disk drive connector x1 * Parallel port x1, Serial port x2 * USB2.0 connector x2, headers x2 (connecting cable option) * Audio connector (Line-in, Line-out, MIC)

1-3 Performance List

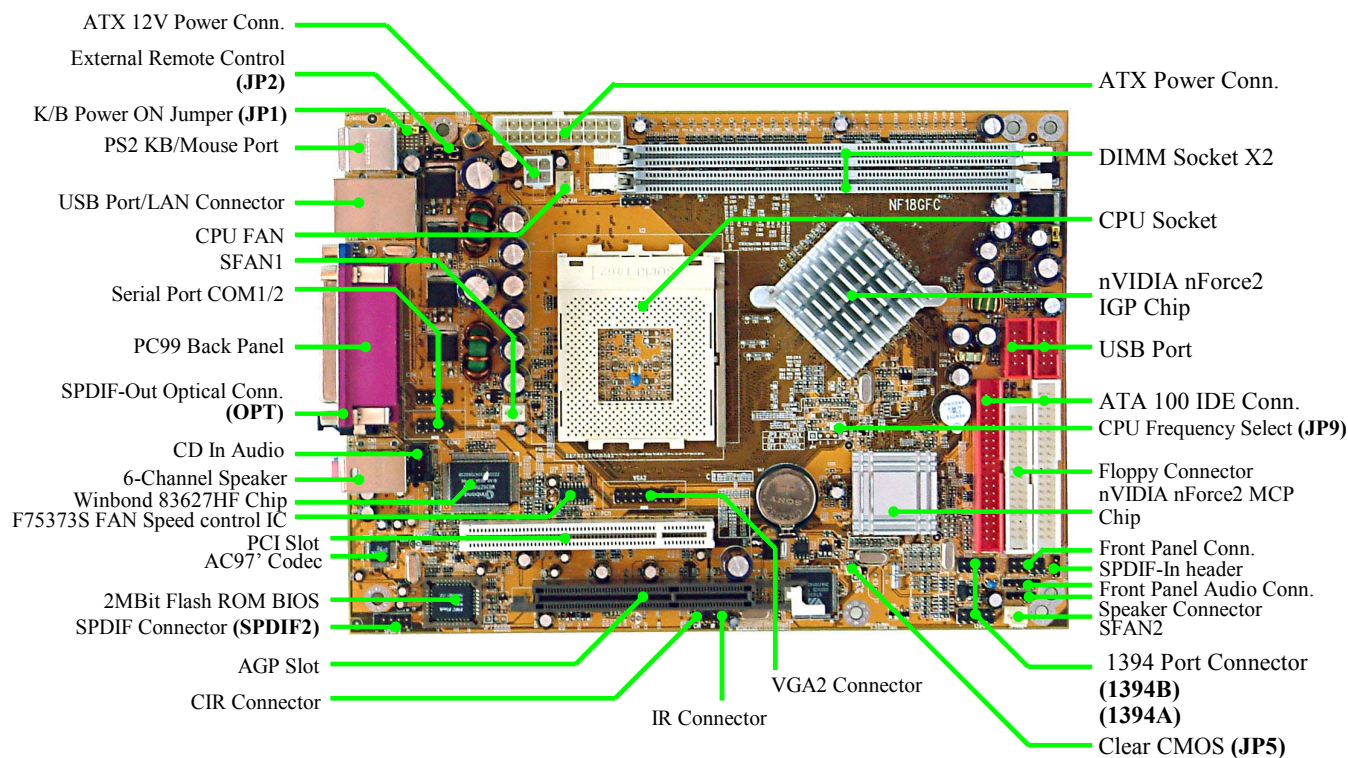
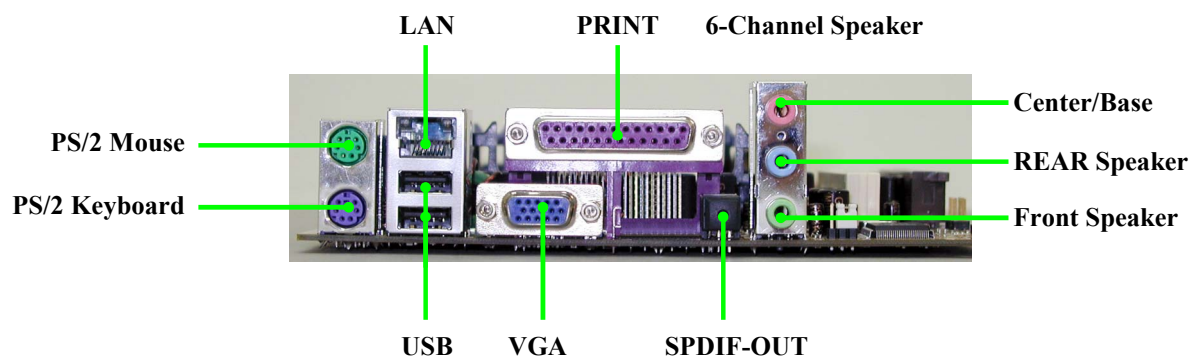
The following performance data list is the testing result of some popular benchmark testing programs. These data are just referred by users, and there is no responsibility for different testing data values gotten by users (the different Hardware & Software configuration will result in different benchmark testing results.)

Performance Test Report

CPU: AMD Athlon XP 3000+ (FSB 166MHZ)
DRAM: 512MB DDR400 X1 (Winbond DDR W942508BH-5)
 256MB DDR400 X1 (Winbond DDR W942508BH-5)
VGA Expansion Card: ATI 9700 PRO (1024x768x32bit color)
Hard Disk Driver: IBM IC35L040AVVN07-0 (ATA-100 7200RPM)
BIOS: Award Optimal default
OS: Win XP Professional

	166/166	166/166 Dual Channel
3D Mark 2001SE	2934	4390
3D Mark 2003	157	218
3D Winbench 2000 (32/32bit)	80.6	123
PC Mark 2002		
CPU/Memory/HDD	6269 / 4276 / 868	6299 / 4663 / 885
Content Creation Winstone 2002	41.7	43.9
Content Creation Winstone 2003	37.1	37.8
Business Winstone 2002	34.2	34.8
Winbench 99 V1.2 :		
Business Disk Winmark99	9440	9510
Hi-end Disk Winmark99	31400	32000
Business Graphic Winmark	625	827
Hi-end Graphic Winmark	1790	1880
SYS Mark 2001/2002 : SISMark 2001/2002 Rating (Internet Content Creation / Office Productivity)		
SISMark 2001	240 (239 / 241)	246 (246 / 247)
SISMark 2002	241 (303 / 191)	248 (321 / 191)
SISOFT Sandra 2003 :		
Dhrystone ALU MIPS	7829	7892
Whetstone FPU MFLOPS	3130	3130
RAM Int Buffered iSSE2 MB/S	2251	2181
RAM Float Buffered iSSE2 MB/S	1943	2112
Integer SSE2 IT/S	11539	11536
Floating-Point SSE2 IT/S	12186	12202
QUAKE3 DEMO1 FPS	130.0	188.9
DEMO2 FPS	130.7	189.9
Return to Castle Wolfenstein FPS	82.3	115.7
WCPUID System / CPU Clock	167.04 / 2471.57	167.05 / 2171.59

1-4 Layout Diagram & Jumper Setting



Jumpers

Jumper	Name	Description	Page
JP1	Keyboard Power On Enable/Disabled	3-pin Block	P.6
JP3	USB Device Power On Enabled/Disabled	3-pin Block	P.6
JP9	CPU Frequency Select	2-pin Block	P.6
JP5	CMOS RAM Clear	3-pin Block	P.7

Connectors

Connector	Name	Description	Page
PWR	ATX Power Connector	20-pin Block	P.11
ATX12V	ATX 12V Power Connector	4-pin Block	P.12
KB/MOUSE (PS2 KB/MOUSE)	PS/2 Mouse & PS/2 Keyboard Connector	6-pin Female	P.12
USBLAN	USB Port Connectors	4-pin Connector	P.12
	LAN Connector	RJ-45 Connector	P.12
LPT	Parallel Port Connector	25-pin Female	P.12
CN1	Audio Connector	3 phone jack Connector	P.12
VGA	VGA Display Connector	15-pin Female Connector	P.12
OPT	SPDIF-Out Optical Connector	Optical Transmitter Connector	P.12
FDD	Floppy Driver Connector	34-pin Block	P.13
IDE1/IDE2	Primary/Secondary IDE Connector	40-pin Block	P.13

Headers

Header	Name	Description	Page
VGA2	VGA Port2 Header	15-pin Block	P.14
COM1/COM2	Serial Port COM1/COM2 Headers	9-pin Block	P.14
FPAUDIO	Front Panel Speaker, MIC Headers	9-pin Block	P.14
USB1/USB2	USB Port Headers	9-pin Block	P.14
1394A/1394B	1394 Port Headers	9-pin Block	P.15
SPDIF	SPDIF-In (Receiver) Optical Header	3-pin Block	P.15
JP2 (option)	External Remote Control Connect Cable Header	2x5-pin Block	P.15
SPEAK	PC Speaker connector	4-pin Block	P.16
FP (Power LED/Reset/ IDE LED/ Power Button)	Front Panel Header (including Power LED/ IDE activity LED/ Reset switch / Power On Button lead)	9-pin Block	P.16
SFAN1,SFAN2,CPUFAN	FAN Speed Headers	3-pin Block	P.16
IR	IR infrared module Headers	5-pin Block	P.17
CIR	Consumer IR infrared module Headers	2-pin Block	P.17
CDIN	CD Audio-In Headers	4-pin Block	P.17
SPDIF2 (Option)	SPDIF In/Out Headers	9-pin Block	P.17

Expansion Sockets

Socket/Slot	Name	Description	Page
ZIF Socket 462	CPU Socket	462-pin PPGA CPU Socket	P.8
DDR1, DDR2	DDR Module Socket	184-pin DDR SDRAM Module Expansion Socket	P.9
PCI1	PCI Slot	32-bit PCI Local Bus Expansion slots	P.10
AGP	AGP 4X/8X Mode Slot	AGP Expansion Slot	P.11

Chapter 2

Hardware installation

2-1 Hardware installation Steps

Before using your computer, you had better complete the following steps:

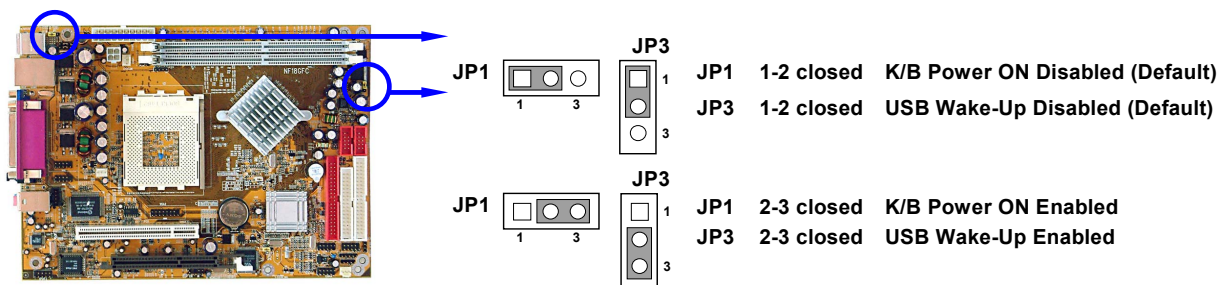
1. Check motherboard setting
2. Install CPU
3. Install Memory
4. Install Expansion cards
5. Connect Ribbon cables, Panel wires, and power supply
6. Setup BIOS
7. Install software driver & utility

2-2 Checking Motherboard's Jumper Setting

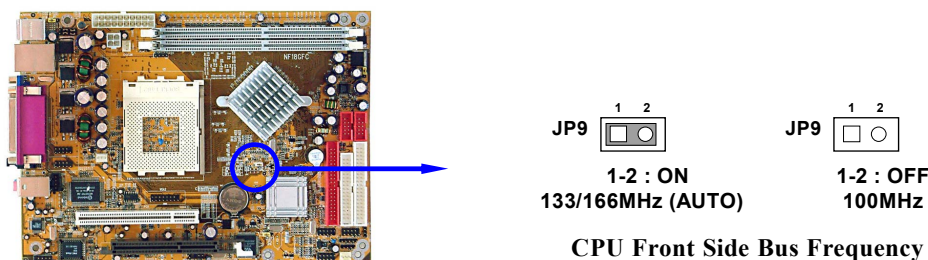
(1) Keyboard Power On function Enabled/Disabled: JP1

USB Wake-Up function Enabled/Disabled :JP3

When setting Enabled you can using keyboard by key in password or use USB device to power on system.



(2) CPU Front Side Bus Frequency Setting (2-pin) : JP9



Note: CPU Front Side Bus Frequency also can change setting in BIOS SETUP, please refer [page 33](#) Miscellaneous Control in Host Clock at Next.

Note: When overclocking cause system can not boot up, users have to keeping press the “INS” key and push the power on button to switch on the system until the screen have display to recovery the standard Default. Otherwise the CMOS will keep the faulty data and M/B will not function.

Note: After overclocking fail BIOS will auto load safety Default, users have to load “Standard Defaults” or “Optimized Defaults” again for normal using.

(3) CMOS RAM Clear (3-pin) : JP5

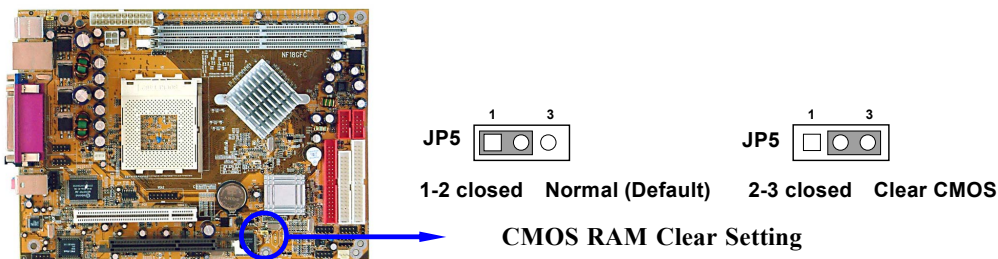
A battery must be used to retain the motherboard configuration in CMOS RAM short 1-2 pins of JP5 to store the CMOS data.

To clear the CMOS, follow the procedure below:

1. Turn off the system and unplug the AC power
2. Remove ATX power cable from ATX power connector
3. Locate JP5 and short pins 2-3 for a few seconds
4. Return JP5 to its normal setting by shorting pins 1-2
5. Connect ATX power cable back to ATX power connector

Note: When should clear CMOS

1. **Troubleshooting**
2. **Forget password**
3. **After over clocking system boot fail**



2-3 Install CPU

2-3-1 Glossary

Chipset (or core logic) - two or more integrated circuits which control the interfaces between the system processor, RAM, I/O devices, and adapter cards.

Processor slot/socket - the slot or socket used to mount the system processor on the motherboard.

Slot (AGP, PCI, ISA, RAM) - the slots used to mount adapter cards and system RAM.

AGP - Accelerated Graphics Port - a high speed interface for video cards; runs at 1X (66MHz), 2X (133MHz), or 4X (266MHz), or 8X (533MHz).

PCI - Peripheral Component Interconnect - a high speed interface for video cards, sound cards, network interface cards, and modems; runs at 33MHz.

ISA - Industry Standard Architecture - a relatively low speed interface primarily used for sound cards and modems; runs at approx. 8MHz.

Serial Port - a low speed interface typically used for mouse and external modems.

Parallel Port - a low speed interface typically used for printers.

PS/2 - a low speed interface used for mouse and keyboards.

USB - Universal Serial Bus - a medium speed interface typically used for mouse, keyboards, scanners, and some digital cameras.

Sound (interface) - the interface between the sound card or integrated sound connectors and speakers, MIC, game controllers, and MIDI sound devices.

LAN (interface) - **Local Area Network** - the interface to your local area network.

BIOS (Basic Input/Output System) - the program logic used to boot up a computer and establish the relationship between the various components.

Driver - software, which defines the characteristics of a device for use by another device or

other software.

Processor - the "central processing unit" (CPU); the principal integrated circuit used for doing the "computing" in "personal computer"

Front Side Bus Frequency - the working frequency of the motherboard, which is generated by the clock generator for CPU, DRAM and PCI BUS.

CPU L2 Cache - the flash memory inside the CPU, normally Athlon CPU has 256K or above, while Duron will have 64K.

2-3-2 About AMD Athlon & Duron 462-pin CPU

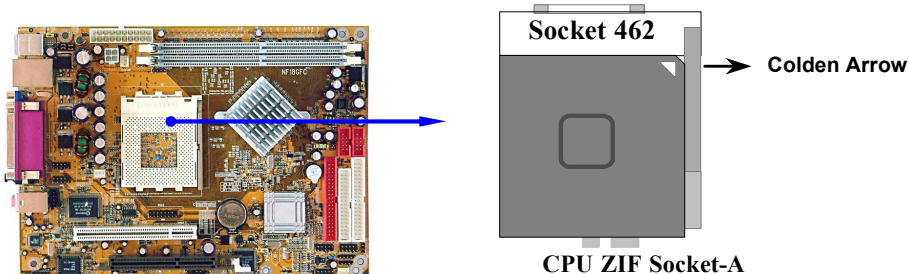
This motherboard supports Socket-A (Socket-462) AMD Athlon/Duron processors.

This motherboard Provides a ZIF Socket-A. The CPU that comes with the motherboard should have a cooling FAN attached to prevent overheating. If this is not the case, then purchase a correct cooling FAN before you turn on your system.

WARNING!	Be sure that there is sufficient air circulation across the processor's heatsink and CPU cooling FAN is working correctly, otherwise it may cause the processor and motherboard overheat and damage, you may install an auxiliary cooling FAN, if necessary.
WARNING!	Due to this motherboard provides new function of protecting CPU ; you must connect the CPU FAN connector on CPUFAN location in order to obtain this feature. Without connection on CPUFAN (or you have connect CPU FAN on SFAN2), the system will shut down immediately to protect both your CPU and motherboard.

Over heat Protect: *Only for Athlon XP serial CPU, when the CPU overheat, system will auto shut down power supply. You can hear a continue beep sound, the power button will be locked up. Users must turn off and turn on the AC power to reset the system otherwise the power button will no function, the other way is keeping press the push button few seconds till the beep sound stop, then release the power button and press the power button again to turn on the power supply.*

To install a CPU, first turn off your system and remove its cover. Locate the ZIF socket and open it by first pulling the level sideways away from the socket then upward to a 90-degree angle. Insert the CPU with the correct orientation as shown below. The notched corner should point toward the end of the level. Because the CPU has a corner pin for two of the four corners, the CPU will only fit in the orientation as shown.



When you put the CPU into the ZIF socket. No force require to insert of the CPU, then press the level to Locate position slightly without any extra force.

2-4 Install Memory

This motherboard provides two 184-pin DUAL INLINE MEMORY MODULES (DIMM) sites for memory expansion available from minimum memory size of 64MB to maximum memory size of 2.0GB DDR SDRAM. **For Support 128-bit data transfer function (Dual Channel) must plug both DDR1 and DDR2, other combination only support 64-bit data transfer.**

Valid Memory Configurations

Bank	184-Pin DIMM	PCS	Total Memory
Bank 0, 1 (DDR1)	DDR 266/333 DDR SDRAM	X1	64MB~1.0GB
Bank 2, 3 (DDR2)	DDR 266/333 DDR SDRAM	X1	64MB~1.0GB
Total	System Memory (Max. 2.0GB)	2	64MB~2.0GB

NOTE! Make sure the total installed memory does not exceeds 2.0GB, otherwise the system may hang during startup.

Generally, installing DDR SDRAM modules to your motherboard is very easy, you can refer to figure 2-4 to see what a 184-Pin DDR 266/333 DDR SDRAM module looks like.

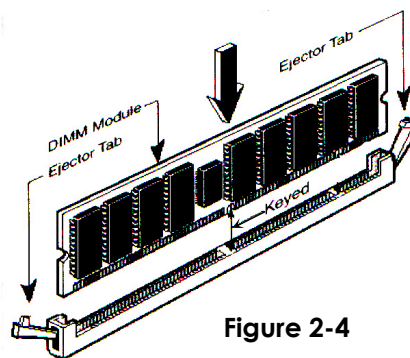
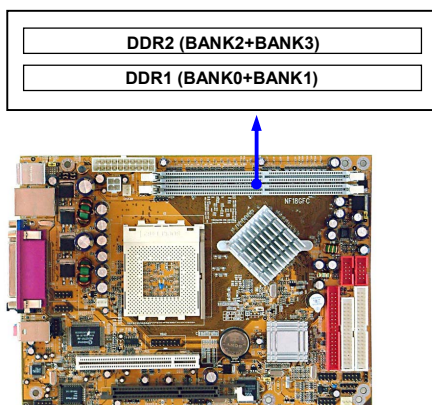


Figure 2-4

NOTE! When you install DIMM module fully into the DIMM socket the eject tab should be locked into the DIMM module very firmly and fit into its indentation on both sides.

WARNING! For the DDR SDRAM CLOCK is set at 166MHz, use only DDR333 compliant DDR Modules. When this motherboard operate at 133Mhz, most system will not even boot if non-compliant modules are used because of the strict timing issues, if your DDR Modules are not DDR266-compliant, set the DDR SDRAM clock to 100MHz to ensure system stability.

2-5 Expansion Cards

WARNING! Turn off your power when adding or removing expansion cards or other system components. Failure to do so may cause severe damage to both your motherboard and expansion cards.

2-5-1 Procedure For Expansion Card Installation

1. Read the documentation for your expansion card and make any necessary hardware or software setting for your expansion card such as jumpers.
2. Remove your computer's cover and the bracket plate on the slot you intend to use.
3. Align the card's connectors and press firmly.
4. Secure the card on the slot with the screen you remove above.
5. Replace the computer system's cover.
6. Set up the BIOS if necessary.
7. Install the necessary software driver for your expansion card.

2-5-2 Assigning IRQs For Expansion Card

Some expansion cards need an IRQ to operate. Generally, an IRQ must exclusively assign to one use. In a standard design, there are 16 IRQs available but most of them are already in use.

Standard Interrupt Assignments

IRQ	Priority	Standard function
0	N/A	System Timer
1	N/A	Keyboard Controller
2	N/A	Programmable Interrupt
3 *	8	Communications Port (COM2)
4 *	9	Communications Port (COM1)
5 *	6	Sound Card (sometimes LPT2)
6 *	11	Floppy Disk Controller
7 *	7	Printer Port (LPT1)
8	N/A	System CMOS/Real Time Clock
9 *	10	ACPI Mode when enabled
10 *	3	IRQ Holder for PCI Steering
11 *	2	IRQ Holder for PCI Steering
12 *	4	PS/2 Compatible Mouse Port
13	N/A	Numeric Data Processor
14 *	5	Primary IDE Channel
15 *	1	Secondary IDE Channel

* These IRQs are usually available for ISA or PCI devices.

2-5-3 Interrupt Request Table For This Motherboard

Interrupt request are shared as shown the table below:

	INT A	INT B	INT C	INT D
--	-------	-------	-------	-------

PCI slot 1	Shared	—	—	—
AGP slot	Shared	—	—	—
AC97/MC97	—	—	Shared	—
Onboard USB	—	—	—	Shared
Onboard USB 1	—	—	—	Shared
Onboard USB 2	—	—	—	Shared

IMPORTANT! If using PCI cards on shared slots, make sure that the drivers support “Shared IRQ” or that the cards don’t need IRQ assignments. Conflicts will arise between the two PCI groups that will make the system unstable or cards inoperable.

2-5-4 AGP Slot

This motherboard provides an AGP Slot, support the 4X/8X AGP VGA card.



2-6 Connectors, Headers

2-6-1 Connectors

(1) Power Connector (20-pin block) : PWR

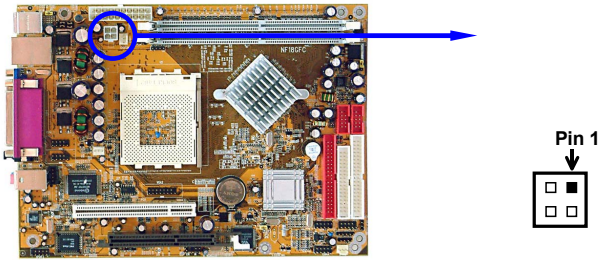
ATX Power Supply connector. This is a new defined 20-pins connector that usually comes with ATX case. The ATX Power Supply allows to use soft power on momentary switch that connect from the front panel switch to 2-pins Power On jumper pole on the motherboard. When the power switch on the back of the ATX power supply turned on, the full power will not come into the system board until the front panel switch is momentarily pressed. Press this switch again will turn off the power to the system board.

PIN	ROW2	ROW1
1	3.3V	3.3V
2	-12V	3.3V
3	GND	GND
4	Soft Power On	5V
5	GND	GND
6	GND	5V
7	GND	GND
8	-5V	Power OK
9	+5V	+5V (for Soft Logic)
10	+5V	+12V

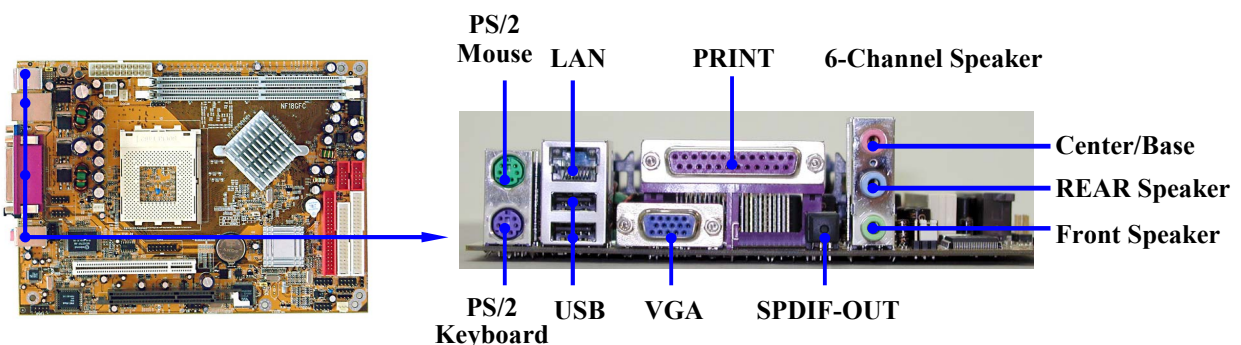
(2) ATX 12V Power Connector (4-pin block) : ATX12V

This is a new defined 4-pins connector that usually comes with ATX Power Supply. The ATX Power Supply which fully support Pentium 4 processor must including this connector for support extra 12V voltage to maintain system power consumption.

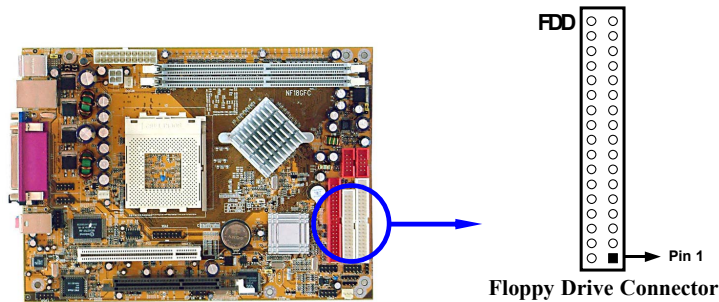
Without this connector might cause system unstable because the power supply can not provide sufficient current for system.



- (3) **PS/2 Mouse & PS/2 Keyboard Connector: KYB**
The connectors for PS/2 keyboard and PS/2 Mouse.
- (4) **USB Port connector: USB**
The connectors are 4-pin connector that connect USB devices to the system board.
- (5) **LAN Port connector: LAN**
The connector is standard RJ45 connector for network connection
- (6) **Parallel Port Connector (25-pin female): LPT**
Parallel Port connector is a 25-pin D-Subminiature Receptacle connector. The On-board Parallel Port can be disabled through the BIOS SETUP. Please refer to Chapter 3 “INTEGRATED PERIPHERALS SETUP” section for more detail information.
- (7) **Audio Connector : CN1 (LINE-OUT/LINE-IN/MIC)**
This Connector are 3 phone Jack for LINE-OUT, LINE-IN, MIC
LINE_OUT : Audio output to speaker
LINE_IN : Audio input to sound chip
MIC : Microphone Connector
- (8) **VGA Connector (15-pin D-Sub) Connector: VGA**
VGA is the 15-pin D-Subminiature female connector for display monitor.
- (9) **SPDIF-Out Optical Connector : OPT**
Optical Transmitter Connector for SPDIF Speaker or SPDIF device .



- (10) **Floppy drive Connector (34-pin block): FDD**
This connector supports the provided floppy drive ribbon cable. After connecting the single plug end to motherboard, connect the two plugs at other end to the floppy drives.

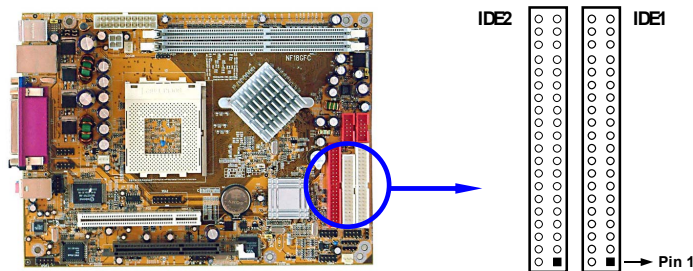


(11) Primary IDE Connector (40-pin block): IDE1

This connector supports the provided IDE hard disk ribbon cable. After connecting the single plug end to motherboard, connect the two plugs at other end to your hard disk(s). If you install two hard disks, you must configure the second drive to Slave mode by setting its jumpers accordingly. Please refer to the documentation of your hard disk for the jumper settings.

(12) Secondary IDE Connector (40-pin block): IDE2

This connector connects to the next set of Master and Slave hard disks. Follow the same procedure described for the primary IDE connector. You may also configure two hard disks to be both Masters using one ribbon cable on the primary IDE connector and another ribbon cable on the secondary IDE connector.



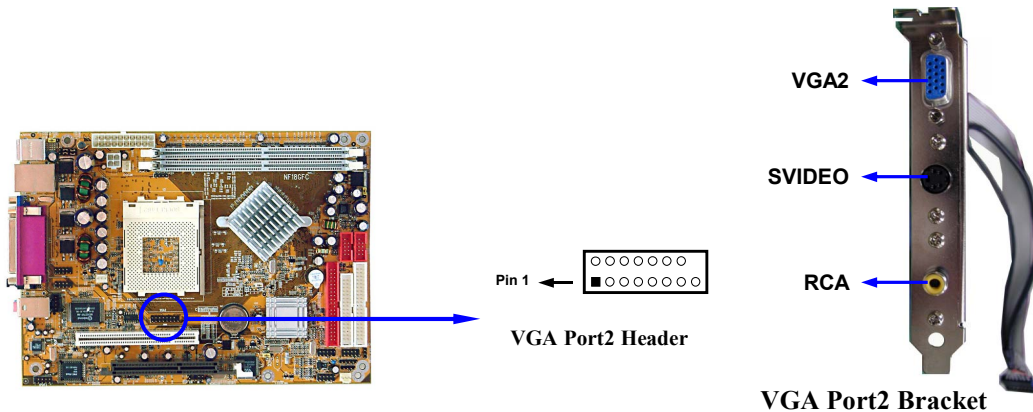
- Two hard disks can be connected to each connector. The first HDD is referred to as the “Master” and the second HDD is referred to as the “Slave”.
- For performance issues, we strongly suggest you don’t install a CD-ROM or DVD-ROM drive on the same IDE channel as a hard disk. Otherwise, the system performance on this channel may drop.

2-6-2 Headers

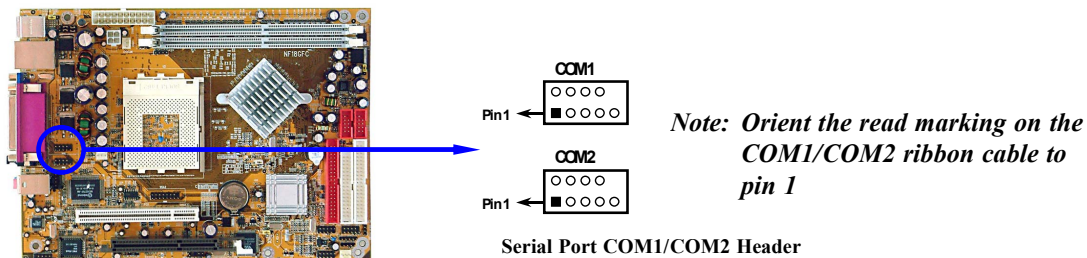
(1) VGA Port2 Header (15-pin) : VGA2 (Bracket Optional)

This header is for secondary CRT Display and TV-out the user only can get one display either the CRT2 or the TV-out at the same time.

Note: *Because VGA port 2 bracket works with the onboard graphic core. When plug in external VGA card in AGP slot, the VGA port2 bracket will not function.*

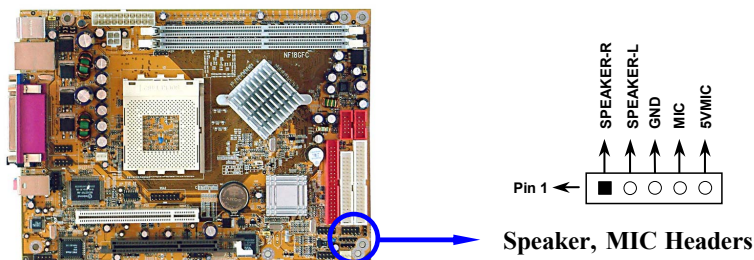


(2) Serial Port COM1/COM2 Header (9-pin) : COM1/COM2



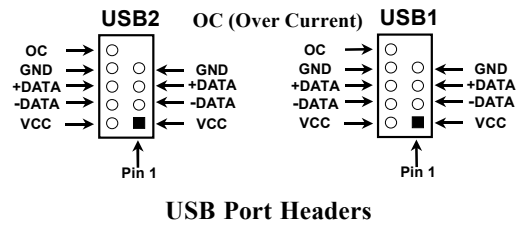
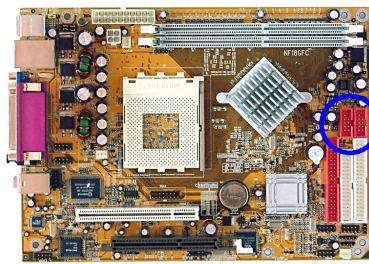
(3) Speaker/MIC Header for Front Panel (5-pin): FPAUDIO

This header connect to Front Panel Speaker, MIC connector with cable.

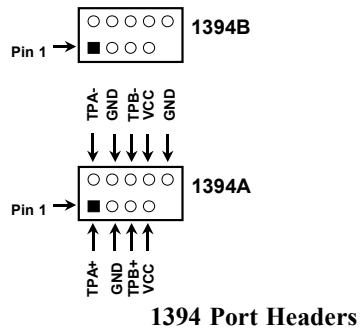
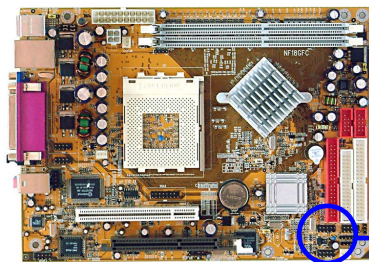


(4) USB Port Headers (9-pin) : USB1, USB2

These headers are used for connecting the additional USB port plug. By attaching an option USB cable, your can be provided with two additional USB plugs affixed to the back panel.

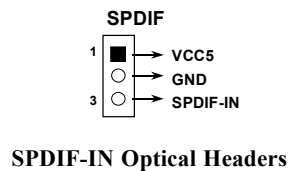
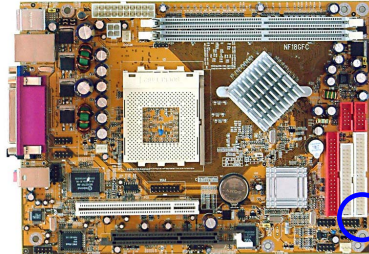


(5) 1394 Port Headers (9-pin): 1394A, 1394B



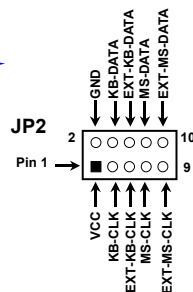
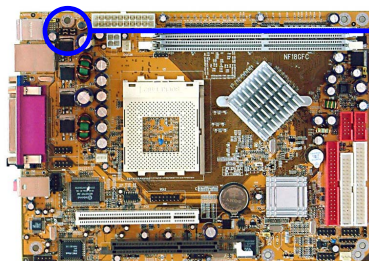
(6) SPDIF-In (Receiver) Optical Header (3-pin) : SPDIF

This header is for SPDIF-In Optical Receiver Connector, by this connector you can input digital signal from other device such like CD-ROM, CD player to get high quality audio.



(7) External Remote Control Connect Cable Header: JP2

JP2 is for connect External Remote Control, when plug out the connect cable you have to insert the jumpers in 3-5, 7-9, 4-6, 8-10 otherwise the On board Keyboard and Mouse will not work.



(8) **Speaker connector: SPEAK**

This 4-pin connector connects to the case-mounted speaker. See the figure below.

(9) **IDE Activity LED: IDE LED**

This connector connects to the hard disk activity indicator light on the case.

(10) **Reset switch lead: RESET**

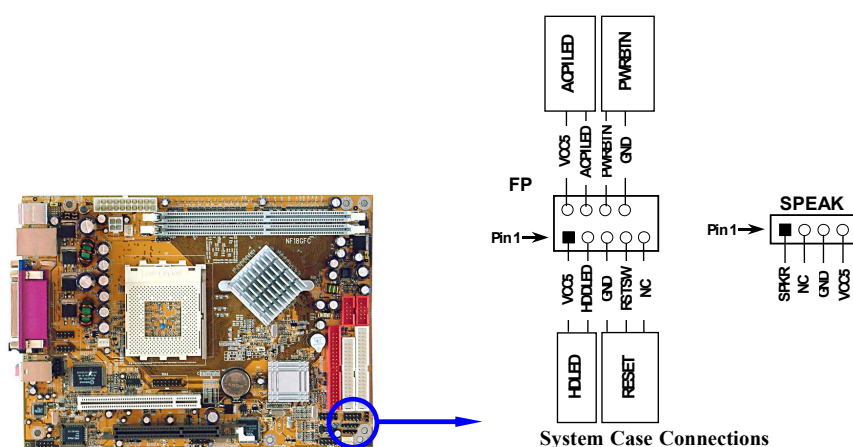
This 2-pin connector connects to the case-mounted reset switch for rebooting your computer without having to turn off your power switch. This is a preferred method of rebooting in order to prolong the life of the system's power supply. See the figure below.

(11) **Power LED: PWR-LED**

The Power LED is light on while the system power is on. Connect the Power LED from the system case to this pin.

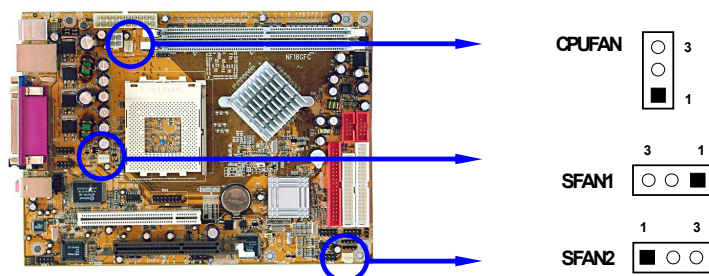
(12) **Power switch: PWR BTN**

This 2-pin connector connects to the case-mounted power switch to power ON/OFF the system.



(13) **FAN Speed Headers (3-pin) : SFAN1, SFAN2, CPUFAN**

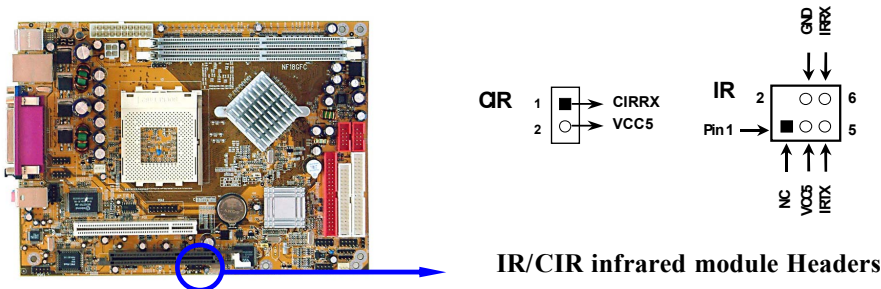
These connectors support cooling fans of 350mA (4.2 Watts) or less, depending on the fan manufacturer, the wire and plug may be different. The red wire should be positive, while the black should be ground. Connect the fan's plug to the board taking into consideration the polarity of connector.



* The FAN in CPUFAN and SFAN1 connector can setting the FAN Speed by change the CPU/SYSTEM Temperature Value in the BIOS Setup, please refer page 31 "PC Health Status" to setting the value.

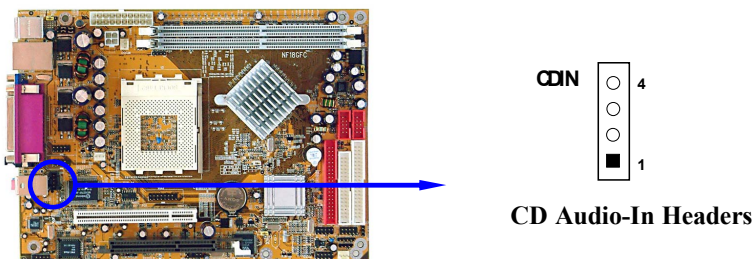
(14) IR infrared module Headers (5-pin/2-pin) : IR/CIR

This connector supports the optional wireless transmitting and receiving infrared module. You must configure the setting through the BIOS setup to use the IR function.



(15) CD Audio-In Headers (4-pin) : CDIN

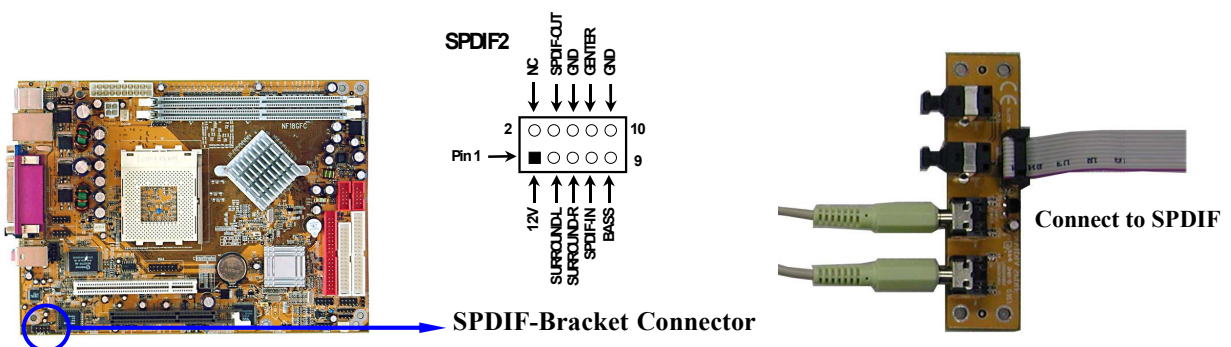
CDIN are the connectors for CD-Audio Input signal. Please connect it to CD-ROM CD-Audio output connector.



(16) SPDIF-Bracket Connector : SPDIF2 (Option)

The connector allows you to connect a SPDIF-Bracket for Sony & Philips Digital Interface (SPDIF). The SPDIF-Bracket offers 2 SPDIF jacks for digital audio transmission and receiver (for optional optical fiber) and 2 analog Line-Out jacks for 4-channel audio output.

To attach the fiber-optic cable to optical SPDIF jack, you have to remove the plug from the jack first.



2-7 Starting Up Your Computer

-
-
1. After all connection are made, close your computer case cover.
 2. Be sure all the switch are off, and check that the power supply input voltage is set to proper position, usually in-put voltage is 220V~240V or 110V~120V depending on your country's voltage used.
 3. Connect the power supply cord into the power supply located on the back of your system case according to your system user's manual.
 4. Turn on your peripheral as following order:
 - a. Your monitor.
 - b. Other external peripheral (Printer, Scanner, External Modem etc...)
 - c. Your system power. For ATX power supplies, you need to turn on the power supply and press the ATX power switch on the front side of the case.
 5. The power LED on the front panel of the system case will light. The LED on the monitor may light up or switch between orange and green after the system is on. If it complies with green standards or if it is has a power standby feature. The system will then run power-on test. While the test are running, the BIOS will alarm beeps or additional message will appear on the screen.

If you do not see any thing within 30 seconds from the time you turn on the power. The system may have failed on power-on test. Recheck your jumper settings and connections or call your retailer for assistance.

Beep	Meaning
One short beep when displaying logo	No error during POST
Long beeps in an endless loop	No DRAM install or detected
One long beep followed by three short beeps	Video card not found or video card memory bad
High frequency beeps when system is working	CPU overheated System running at a lower frequency

6. During power-on, press <Delete> key to enter BIOS setup. Follow the instructions in BIOS SETUP.
7. **Power off your computer:** You must first exit or shut down your operating system before switch off the power switch. For ATX power supply, you can press ATX power switching after exiting or shutting down your operating system. If you use Windows 9X, click “**Start**” button, click “**Shut down**” and then click “**Shut down the computer?**” The power supply should turn off after windows shut down.

Chapter 3

Introducing BIOS

The BIOS is a program located on a Flash Memory on the motherboard. This program is a bridge between motherboard and operating system. When you start the computer, the BIOS program gain control. The BIOS first operates an auto-diagnostic test called POST (power on self test) for all the necessary hardware, it detects the entire hardware device and configures the parameters of the hardware synchronization. Only when these tasks are completed done it gives up control of the computer to operating system (OS). Since the BIOS is the only channel for hardware and software to communicate, it is the key factor for system stability, and in ensuring that your system performance as its best.

In the BIOS Setup main menu of Figure 3-1, you can see several options. We will explain these options step by step in the following pages of this chapter, but let us first see a short description of the function keys you may use here:

- Press <Esc> to quit the BIOS Setup.
- Press ↑↓←→ (up, down, left, right) to choose, in the main menu, the option you want to confirm or to modify.
- Press <F10> when you have completed the setup of BIOS parameters to save these parameters and to exit the BIOS Setup menu.
- Press Page Up/Page Down or +/- keys when you want to modify the BIOS parameters for the active option.

3-1 Entering Setup

Power on the computer and by pressing immediately allows you to enter Setup.

If the message disappears before your respond and you still wish to enter Setup, restart the system to try again by turning it OFF then ON or pressing the “RESET” button on the system case. You may also restart by simultaneously pressing <Ctrl>, <Alt> and <Delete> keys. If you do not press the keys at the correct time and the system does not boot, an error message will be displayed and you will again be asked to

Press <F1> to continue, <Ctrl-Alt-Esc> or to enter Setup

3-2 Getting Help

Main Menu

The on-line description of the highlighted setup function is displayed at the bottom of the screen.

Status Page Setup Menu/Option Page Setup Menu

Press F1 to pop up a small help window that describes the appropriate keys to use and the possible selections for the highlighted item. To exit the Help Window, press <Esc>.

Load Optimized Defaults

Use this menu to load the BIOS default values that are factory settings for optimal performances system operations.

Load Standard Defaults

Use this menu to load the BIOS default values for the minimal/stable performance system operation.

Set Supervisor/User Password

Use this menu to set User and Supervisor Passwords.

Save & Exit Setup

Save CMOS value changes to CMOS and exit setup.

Exit Without Saving

Abandon all CMOS value changes and exit setup.

3-4 Standard CMOS Features

The items in Standard CMOS Setup Menu are divided into several categories. Each category includes no, one or more than one setup items. Use the arrow keys to highlight the item and then use the <PgUp> or <PgDn> keys to select the value you want in each item.

CMOS Setup Utility - Copyright(C) 1984-2003 Award Software

Standard CMOS Features

Date (mm:dd:yy)	Wed, Sep, 10 2003	Item Help
Time (hh:mm:ss)	16 : 45 : 35	
> IDE Primary Master	Press Enter None	Menu Level > Change the day, month, year and century
> IDE Primary Slave	Press Enter None	
> IDE Secondary Master	Press Enter None	
> IDE Secondary Slave	Press Enter None	
Drive A	1.44M, 3.5 in.	
Drive B	None	
Video	EGA/VGA	
Halt On	All,But Keyboard	
Base Memory	640K	
Extended Memory	56320K	
Total Memory	57344K	
↑↓←→ Move Enter:Select +/-/PU/PD:Value F10:Save ESC:Exit F1:General Help F5:Previous Values F6:Optimized Defaults F7:Standard Defaults		

Date

The date format is <day><month><date><year>.

Day Day of the week, from Sun to Sat, determined by BIOS. Read-only.

Month The month from Jan. through Dec.

Date The date from 1 to 31 can be keyed by numeric function keys.

Year The year depends on the year of the BIOS.

Time

The time format is <hour><minute><second>.

Primary Master/Primary Slave

Secondary Master/Secondary Slave

Press PgUp/<+> or PgDn/<-> to select Manual, None, Auto type. Note that the specifications of your drive must match with the drive table. The hard disk will not work properly if you enter improper information for this category. If your hard disk drive type is not matched or listed, you can use Manual to define your own drive type manually.

If you select Manual, related information is asked to be entered to the following items. Enter the information directly from the keyboard. This information should be provided in the documentation from your hard disk vendor or the system manufacturer.

If the controller of HDD interface is SCSI, the selection shall be "None".

If the controller of HDD interface is CD-ROM, the selection shall be "None"

Access Mode The settings are Auto Normal, Large, and LBA.

Cylinder number of cylinders

Head number of heads

Precomp write precomp

Landing Zone landing zone

Sector number of sectors

3-5 Advanced BIOS Features

CMOS Setup Utility - Copyright(C) 1984-2003 Award Software

Advanced BIOS Features

Anti-Virus Protection	Disabled	Item Help
CPU L1 Cache	Enabled	
CPU L2 Cache	Enabled	
Quick Power On Self Test	Enabled	
SATA & SCSI Boot Order	ATA, SCSI	Menu Level >
HDD Boot Sprite	Disabled	
First Boot Device	Floppy	
Second Boot Device	HDD-0	
Third Boot Device	CDROM	
Boot other Device	Enabled	
Swap Floppy Drive	Disabled	
Boot Up Floppy Seek	Enabled	
Boot Up NumLock Status	On	
Gate A20 Option	Normal	
Typematic Rate Setting	Disabled	
Typematic Rate (Chars/Sec)	6	
Typematic Delay (Msec)	250	
Security Option	Setup	
OS Select For DRAM > 64MB	Non-OS2	
HDD S.M.A.R.T. Capability	Disabled	
Video BIOS Shadow	Enabled	
↑↓→← Move Enter:Select +/-/PU/PD:Value F10:Save ESC:Exit F1:General Help F5:Previous Values F6:Optimized Defaults F7:Standard Defaults		

Anti-Virus Protection

Allows you to choose the VIRUS Warning feature for IDE Hard Disk boot sector protection. If this function is enabled and someone attempt to write data into this area, BIOS will show a warning message on screen and alarm beep.

Disabled (default) No warning message to appear when anything attempts to access the boot sector or hard disk partition table.

Enabled Activates automatically when the system boots up causing a warning message to appear when anything attempts to access the boot sector of hard disk partition table.

CPU L1 Cache

The default value is Enabled.

Enabled (default) Enable cache

Disabled Disable cache

Note: The internal cache is built in the processor.

CPU L2 Cache

Choose Enabled or Disabled. This option enables the Level 2 cache memory.

Quick Power On Self-Test

This category speeds up Power On Self Test (POST) after you power on the computer. If this is set to Enabled. BIOS will shorten or skip some check items during POST.

Enabled (default) Enable quick POST

Disabled Normal POST

First/Second/Third/Fourth Boot Device

The BIOS attempts to load the operating system from the devices in the sequence selected in these items. The settings are Floppy, LS/ZIP, HDD-0/HDD-1/HDD-3, SCSI, CDROM, LAD and Disabled.

Swap Floppy Drive

Switches the floppy disk drives between being designated as A and B. Default is Disabled.

Boot Up Floppy Seek

During POST, BIOS will determine if the floppy disk drive installed is 40 or 80 tracks. 360K type is 40 tracks while 760K, 1.2M and 1.44M are all 80 tracks.

Boot Up NumLock Status

The default value is On.

On (default) Keypad is numeric keys.

Off Keypad is arrow keys.

Gate A20 Option

Normal The A20 signal is controlled by keyboard controller or chipset hardware.

Fast (default) The A20 signal is controlled by port 92 or chipset specific method.

Typematic Rate Setting

Keystrokes repeat at a rate determined by the keyboard controller. When enabled, the typematic rate and typematic delay can be selected. The settings are: Enabled/Disabled.

Typematic Rate (Chars/Sec)

Sets the number of times a second to repeat a keystroke when you hold the key down. The settings are: 6, 8, 10, 12, 15, 20, 24, and 30.

Typematic Delay (Msec)

Sets the delay time after the key is held down before it begins to repeat the keystroke. The settings are 250, 500, 750, and 1000.

Security Option

This category allows you to limit access to the system and Setup, or just to Setup.

- System** The system will not boot and access to Setup will be denied if the correct password is not entered at the prompt.
- Setup (default)** The system will boot, but access to Setup will be denied if the correct password is not entered at the prompt.

OS Select For DRAM > 64MB

Allows OS2® to be used with >64MB of DRAM. Settings are Non-OS/2 (default) and OS2. Set to OS/2 if using more than 64MB and running OS/2®.

3-6 Advanced Chipset Features

The Advanced Chipset Features Setup option is used to change the values of the chipset registers. These registers control most of the system options in the computer.

CMOS Setup Utility - Copyright(C) 1984-2003 Award Software

Advanced Chipset Features

System Performance	Standard	Item Help
X CPU Interface	Optimal	
X T(RAS)	6	Menu Level >
X T(RCD)	3	
X T(RP)	3	
X CAS Latency	2.5	
Frame Buffer Size	32M	
AGP Aperture Size	64M	
AGP 8X Support	Enabled	
AGP Fast Write Capability	Enabled	
System BIOS Cacheable	Disabled	
Video RAM Cacheable	Disabled	
↑↓→← Move Enter:Select +/-/PU/PD:Value F10:Save ESC:Exit F1:General Help F5:Previous Values F6:Optimized Defaults F7:Standard Defaults		

CAS Latency

When synchronous DRAM is installed, the number of clock cycles of CAS latency depends on the DRAM timing. The settings are: 2T and 2.5T.

System BIOS Cacheable

Selecting Enabled allows caching of the system BIOS ROM at F0000h-FFFFFh, resulting in better system performance. However, if any program writes to this memory area, a system error may result. The settings are: Enabled and Disabled.

Video RAM Cacheable

Select Enabled allows caching of the video BIOS, resulting in better system performance. However, if any program writes to this memory area, a system error may result. The settings are: Enabled and Disabled.

Frame Buffer Size

You can choose the On board VGA memory size share from system memory. The settings are: 8M, 16M, 32M, 64M, Disabled.

3-7 Integrated Peripherals

CMOS Setup Utility - Copyright(C) 1984-2003 Award Software

Integrated Peripherals

<div><div>> Onboard IDE Function</div><div>Press Enter</div><div>> Onboard Device Function</div><div>Press Enter</div><div>> Onboard Super IO Function</div><div>Press Enter</div><div>Init Display First</div><div>PCI Slot</div><div>Power On Function</div><div>Button Only</div><div>X KB Power On Password</div><div>Enter</div><div>X Hot Key Power On</div><div>Ctrl+F1</div><div>Power Loss Function</div><div>Always off</div></div>		Item Help
		Menu Level >
<div>↑↓→← Move Enter:Select +/-/PU/PD:Value F10:Save ESC:Exit F1:General Help</div> <div>F5:Previous Values F6:Optimized Defaults F7:Standard Defaults</div>		

Onboard IDE Function

Please refer to section 3-7-1

Onboard Device Function

Please refer to section 3-7-2

Onboard Super IO Function

Please refer to section 3-7-3

Init Display First

This item allows you to decide to activate whether PCI Slot or AGP VGA first. The settings are: PCI Slot, AGP Slot.

Power Loss Function

This item allows the system power ON/OFF automatic when power loss and recovery again, you can choose Auto for recovery pre-state, or always ON/OFF after power recovery.

3-7-1 Onboard IDE Function

CMOS Setup Utility – Copyright(C) 1984-2003 Award Software

OnChip IDE Function

OnChip IDE Channel0	Enabled	Item Help
OnChip IDE Channel1	Enabled	
Primary Master PIO	Auto	Menu Level >>
Primary Slave PIO	Auto	
Secondary Master PIO	Auto	
Secondary Slave PIO	Auto	
Primary Master UDMA	Auto	
Primary Slave UDMA	Auto	
Secondary Master UDMA	Auto	
Secondary Slave UDMA	Auto	
IDE 32-bit Transfer Mode	Enabled	
IDE HDD Block Mode	Enabled	
IDE Prefetch Mode	Enabled	
Delay For HDD (Secs)	0	

↑↓↔← Move Enter:Select +/-/PU/PD:Value F10:Save ESC:Exit F1:General Help		
F5:Previous Values F6:Optimized Defaults F7:Standard Defaults		

OnChip IDE Channal0/Channel1

The integrated peripheral controller contains an IDE interface with support for two IDE channels. Select *Enabled* to activate each channel separately. The settings are: Enabled and Disabled.

Primary/Secondary Master/Slave PIO

The four IDE PIO (Programmed Input/Output) fields let you set a PIO mode (0-4) for each of the four IDE devices that the onboard IDE interface supports. Modes 0 through 4 provide successively increased performance. In Auto mode, the system automatically determines the best mode for each device. The settings are: Auto, Mode 0, Mode 1, Mode 2, Mode 3, Mode 4.

Primary/Secondary Master/Slave UDMA

Ultra DMA/33 implementation is possible only if your IDE hard drive supports it and the operating environment includes a DMA driver (Windows 95 OSR2 or a third-party IDE bus master driver). If your hard drive and your system software both support Ultra DMA/33 and Ultra DMA/66, select Auto to enable BIOS support. The settings are: Auto, Disabled.

IDE HDD Block Mode

Block mode is also called block transfer, multiple commands, or multiple sector read/write. If your IDE hard drive supports block mode (most new drives do), select Enabled for automatic detection of the optimal number of block read/writes per sector the drive can support. The settings are: Enabled, Disabled.

3-7-2 Onboard Device Function

CMOS Setup Utility - Copyright(C) 1984-2003 Award Software

OnChip Device Function

AC97 Sound Device	Auto	Item Help
Game Port Address	201	Menu Level >>
Midi Port Address	Disabled	
X Midi Port IRQ	10	
1394 ontroller	Auto	
nVIDIA LAN Function	Auto	
USB Host Controller	Enabled	
USB 2.0 Support	Enabled	
USB Keyboard Legacy Support	Disabled	
↑↓→← Move Enter:Select +/-/PU/PD:Value F10:Save ESC:Exit F1:General Help F5:Previous Values F6:Optimized Defaults F7:Standard Defaults		

Game Port Address/Midi Port Address

This will determine which Address the Game Port/Midi Port will use.

USB Host Controller

Select *Enabled* if your system contains a Universal Serial Bus (USB) controller and you have a USB peripherals. The settings are: Enabled, Disabled.

USB Keyboard Support

Select *Enabled* if your system contains a Universal Serial Bus (USB) controller and you have a USB keyboard. The settings are: Enabled, Disabled.

3-7-3 Onboard Super IO Function

CMOS Setup Utility - Copyright(C) 1984-2003 Award Software

Onboard Super IO Function

Onboard FDD Controller	Enabled	Item Help
Onboard Serial Port 1	3F8/IRQ4	
Onboard Serial Port 2	2F8/IRQ3	Menu Level >>
UART2 Mode	Normal	
X RxD, TxD Active	Hi, Lo	
X IR Transmission Delay	Enabled	
X IR Duplex Mode	Half	
X IR Pins	IRRX/IRTX	
Onboard Parallel Port	378/IRQ7	
Parallel Mode	SPP	
X EPP Mode Select	EPP1.9	
X ECP Mode Use DMA	3	
↑↓↔← Move Enter:Select +/-/PU/PD:Value F10:Save ESC:Exit F1:General Help F5:Previous Values F6:Optimized Defaults F7:Standard Defaults		

Onboard FDD Controller

Select Enabled if your system has a floppy disk controller (FDD) installed on the system board and you wish to use it. If you install add-on FDC or the system has no floppy drive, select Disabled in this field. The settings are: Enabled and Disabled.

Onboard Serial Port 1/Port 2

Select an address and corresponding interrupt for the first and the second serial ports. The settings are: 3F8/IRQ4, 2E8/IRQ3, 3E8/IRQ4, 2F8/IRQ3, Disabled, Auto.

UART2 Mode

This item allows you to determine which InfraRed(IR) function of the onboard I/O chip, this functions uses.

Onboard Parallel Port

There is a built-in parallel port on the on-board Super I/O chipset that Provides Standard, ECP, and EPP features. It has the following option:

Disabled

(3BCH/IRQ7)/ Line Printer port 0
(278H/IRQ5)/ Line Printer port 2
(378H/IRQ7) Line Printer port 1

Parallel Port Mode

SPP : Standard Parallel Port
EPP : Enhanced Parallel Port
ECP : Extended Capability Port

SPP/EPP/ECP/ECP+EPP

To operate the onboard parallel port as Standard Parallel Port only, choose "SPP." To operate the onboard parallel port in the EPP modes simultaneously, choose "EPP." By choosing "ECP", the onboard parallel port will operate in ECP mode only. Choosing "ECP+EPP" will allow the onboard parallel port to support both the ECP and EPP modes simultaneously. The ECP mode has to use the DMA channel, so choose the onboard parallel port with the ECP feature. After selecting it, the following message will appear: "ECP Mode Use DMA" at this time, the user can choose between DMA channels 3 to 1. The onboard parallel port is EPP Spec. compliant, so after the user chooses the onboard parallel port with the EPP function, the following message will be displayed on the screen: "EPP Mode Select." At this time either EPP 1.7 spec. or EPP 1.9 spec. can be chosen.

3-8 Power Management Setup

The Power Management Setup allows you to configure your system to most effectively save energy saving while operating in a manner consistent with your own style of computer use.

CMOS Setup Utility – Copyright(C) 1984-2003 Award Software

Power Management Setup

ACPI Function	Enabled	Item Help
ACPI Suspend Type	S1(POS)	
Video off Method	V/H SYNC+Blank	
Power Button Function	Instant-Off	Menu Level >
Wake-Up on PCI PME	Disabled	
Wake-Up on Ring/LAN	Disabled	
USB Resume from S3/S4	Disabled	
Wake Up on RTC Alarm	Disabled	
X Time(dd:hh:mm) of Alarm	0: 0: 0	
↑↓→← Move Enter:Select +/-/PU/PD:Value F10:Save ESC:Exit F1:General Help F5:Previous Values F6:Optimized Defaults F7:Standard Defaults		

ACPI Function

This item allows you to Enabled/Disabled the Advanced Configuration and Power Management (ACPI). The settings are Enabled and Disabled.

Video Off Method

This determines the manner in which the monitor is blanked.

- DPMS (default)** Initial display power management signaling.
- Blank Screen** This option only writes blanks to the video buffer.
- V/H SYNC+Blank** This selection will cause the system to turn off the vertical and horizontal synchronization ports and write blanks to the video buffer.

Power Button Function

Pressing the power button for more than 4 seconds forces the system to enter the Soft-Off state. The settings are: Delay 4 Sec, Instant-Off.

Wake Up On Ring/PME/LAN

During Disabled, the system will ignore any incoming call from the modem/LAN. During Enabled, the system will boot up if there's an incoming call from the modem.

Wake Up on RTC Alarm

This function is for setting date and time for your computer to boot up. During Disabled, you cannot use this function. During Enabled, choose the Date and Time Alarm:

Time(dd:hh:mm) of Alarm

You can choose which day of month, what hour, minute the system will boot up.

Note: If you have change the setting, you must let the system boot up until it goes to the operating system, before this function will work.

3-9 PnP/PCI Configuration Setup

This section describes configuring the PCI bus system. PCI, or **P**ersonal **C**omputer **I**nterconnect, is a system which allows I/O devices to operate at speeds nearing the speed the CPU itself uses when communicating with its own special components. This section covers some very technical items and it is strongly recommended that only experienced users should make any changes to the default settings.

CMOS Setup Utility - Copyright(C) 1984-2003 Award Software

PnP/PCI Configurations

Reset Configuration Data	Disabled	Item Help
Resources Controlled By	Manual	Menu Level >
x IRQ Resources	Press Enter	
PCI/VGA Palette Snoop	Disabled	
Assign IRQ For VGA	Enabled	
Assign IRQ For USB	Enabled	
↑↓→← Move Enter:Select +/-/PU/PD:Value F10:Save ESC:Exit F1:General Help F5:Previous Values F6:Optimized Defaults F7:Standard Defaults		

Reset Configuration Data

Normally, you leave this field Disabled. Select Enabled to reset Extended System Configuration Data (ESCD) when you exit Setup if you have installed a new add-on and the system reconfiguration has caused such a serious conflict that the operating system can not boot. The settings are: Enabled and Disabled.

Resource Controlled By

The Award Plug and Play BIOS has the capacity to automatically configure all of the boot and Plug and Play compatible devices. However, this capability means absolutely nothing unless you are using a Plug and Play operating system such as Windows®95/98. If you set this field to “manual” choose specific resources by going into each of the sub menu that follows this field (a sub menu is preceded by a “>”).

The settings are: Auto(ESCD), Manual.

IRQ Resources

When resources are controlled manually, assign each system interrupt a type, depending on the type of device using the interrupt.

Please refer to section 3-9-1

PCI/VGA Palette Snoop

Leave this field at *Disabled*. The settings are Enabled, Disabled.

3-9-1 IRQ Resources

CMOS Setup Utility - Copyright(C) 1984-2003 Award Software

IRQ Resources

IRQ3	assigned to	PCI Device	Item Help
IRQ4	assigned to	PCI Device	
IRQ5	assigned to	PCI Device	
IRQ7	assigned to	PCI Device	
IRQ9	assigned to	PCI Device	Menu Level >>
IRQ10	assigned to	PCI Device	
IRQ11	assigned to	PCI Device	
IRQ12	assigned to	PCI Device	
IRQ14	assigned to	PCI Device	
IRQ15	assigned to	PCI Device	
↑↓→← Move Enter:Select +/-/PU/PD:Value F10:Save ESC:Exit F1:General Help F5:Previous Values F6:Optimized Defaults F7:Standard Defaults			

3-10 PC Health Status

This section shows the Status of you CPU, Fan, Warning for overall system status. This is only available if there is Hardware Monitor onboard.

CMOS Setup Utility - Copyright(C) 1984-2003 Award Software

PC Health Status

Show PC Health in Post	Enabled	Item Help
CPUFAN Smart Mode	Enabled	
CPUFAN Temp1 Value	40°C	Menu Level >
CPUFAN Speed below Temp1	50%	
CPUFAN Temp2 Value	45°C	
CPUFAN Speed below Temp2	80%	
SYSFAN Smart Mode	Enabled	
SYSFAN Temp1 Value	40°C	
SYSFAN Speed below Temp1	50%	
SYSFAN Temp2 Value	45°C	
SYSFAN Speed below Temp2	80%	
Current CPU Temperature	38°C	
Current System Temperature	25°C	
Current CPUFAN Speed	5000 rpm	
Current SYSFAN Speed	5000 rpm	
Vcore	1.78V	
Vcc3.3	3.31V	
+5V	4.98V	
Vdd 1.5	1.53V	
↑↓→← Move Enter:Select +/-/PU/PD:Value F10:Save ESC:Exit F1:General Help F5:Previous Values F6:Optimized Defaults F7:Standard Defaults		

Show PC Health in Post

During Enabled, it displays information list below. The choice is either Enabled or Disabled

CPUFAN/SYSFAN Smart Mode

Enabled this item can let users setting CPUFAN/SYSFAN Speed when the CPU/System temperature below the temperature value of BIOS Setting.

CPUFAN/SYSFAN Temp1/Temp2 Value

This item allow users setting the temperature value of CPU/SYSTEM for FAN speed controller change the FAN speed the setting are 30°C~100°C.

CPUFAN/SYSFAN Speed below Temp1/Temp2

This item allow the FAN work in 50%, 60%, 70%, 80%, 90%, 100% of full speed when the CPU/SYSTEM temperature below Temp1/Temp2.

Current CPU Temperature/Current System Temp/Current CPUFAN, SYSFAN Speed/Vcore/Vdd/3.3V

This will show the CPU/FAN/System voltage chart and FAN Speed.

3-11 Miscellaneous Control

This section is for setting CPU Frequency/Voltage Control.

CMOS Setup Utility - Copyright(C) 1984-2003 Award Software
Miscellaneous Control

** Current Host Clock is 133MHz ** Host Clock at Next Boot is 133MHz ** Current DRAM Clock is 133MHz ** DRAM Clock at next Boot is 133MHz (By SPD) CPU Vcore Select Default CPU Ratio Select Default Core_VDD Select 1.7V(Default) VDD_AUXC Select 1.6V(Default) VAGP Output 1.5V(Default) VRAM Output 2.6V(Default) VAUX Output Default VAGP LUV Protect Enabled VRAM LUV Protect Enabled Dual3.3V LUV Protect Disabled Flash Parts Write Protect Enabled	Item Help Menu Level >
↑↓→← Move Enter:Select +/-/PU/PD:Value F10:Save ESC:Exit F1:General Help F5:Previous Values F6:Optimized Defaults F7:Standard Defaults	

Host Clock at next Boot is

This item allows you to select CPU frequency by BIOS setting

The choice are: 100/133/166/200/236/240/242/244/245/250 MHz

DRAM Clock at next Boot is

This field displays the capability of the memory modules that you can use

The choice is either 100/110/125/133/138/166/200/208/221/229 MHz

CPU Vcore Select

This item allows you to select Vcore of the CPU. The choice are: +1.100V~+1.850V.

CPU Ratio Select

This item allows you to select Ratio of the CPU. The choice are:X5~X24

VDD AUXC Select

This item allows you to select Chip Voltage. The choice are 1.6V(Default), 1.7V

VAGP Output

This item allows you to select 1.5V of the AGP 4X VGA card. The choice are: 1.5V, 1.6V,1.7V, 1.8V

VRAM Output

This item allows you to select 2.5V of the DDR Module. The choice are: 2.5V~ 3.0V.

VAUX Output

This item allows you to select AUX voltage. The choice are: Default, 2%, 4%, 8%,12%, 16%.

VAGP/VRAM LUV Protect

This item allows you enabled the protect function on motherboard when over current. The choice are: Enabled(Default), Disabled

Flash Part Write Protect

This item allows you protect BIOS prevent the data destroy by virus. The choice are: Enabled, Disabled. Before flash BIOS you have to change the setting to Disabled otherwise it can not flash BIOS.

3-12 Load Standard/Optimized Defaults

Load Standard Defaults

When you press <Enter> on this item, you get confirmation dialog box with a message similar to:

Load Standard Defaults (Y/N)? N

Pressing <Y> loads the BIOS default values for the most stable, minimal-performance system operations.

Load Optimized Defaults

When you press <Enter> on this item, you get a confirmation dialog box with a message similar to:

Load Optimized Defaults (Y/N)? N

Pressing <Y> loads the default values that are factory settings for optimal performance system operations.

3-13 Set Supervisor/User Password

You can set either supervisor or user password, or both of them. The differences are:

Supervisor password: Can enter and change the options of the setup menus.

User password: Can only enter but do not have the right to change the options of the setup menus. When you select this function, the following message will appear at the center of the screen to assist you in creating a password.

ENTER PASSWORD:

Type the password, up to eight characters in length, and press <Enter>. The password typed now will clear any previously entered password from CMOS memory. You will be asked to confirm the password. Type the password again and press <Enter>. You may also press <Esc> to abort the selection and not enter a password.

To disable a password, just press <Enter> when you are prompted to enter the password. A message will confirm that the password will be disabled. Once the password is disabled, the system will boot and you can enter Setup freely.

PASSWORD DISABLED.

When a password has been enabled, you will be prompted to enter it every time you try to enter Setup. This prevents an unauthorized person from changing any part of your system configuration.

Additionally, when a password is enabled, you can also require the BIOS to request a password every time your system is rebooted. This would prevent unauthorized use of your computer.

You determine when the password is required within the BIOS Features Setup Menu and its Security option. If the Security option is set to “System”, the password will be required both at boot and at entry to Setup. If set to “Setup”, prompting only occurs when trying to enter Setup.

Chapter 4

DRIVER & FREE PROGRAM INSTALLATION

Check your package and there is A MAGIC INSTALL CD included. This CD consists of all DRIVERS you need and some free application programs and utility programs. In addition, this CD also include an auto detect software which can tell you which hardware is installed, and which DRIVERS needed so that your system can function properly. We call this auto detect software MAGIC INSTALL.

MAGIC INSTALL Supports WINDOWS 98SE/ME/NT4.0/2000/XP

Insert CD into your CD-ROM drive and the MAGIC INSTALL Menu should appear as below. If the menu does not appear, double-click MY COMPUTER / double-click CD-ROM drive or click START / click RUN / type X:\SETUP.EXE (assuming X is your CD-ROM drive).



From MAGIC INSTALL MENU you may make 12 selections:

- | | |
|----------------|---|
| 1. nFORCE | install NVIDIA nForce chipset system driver |
| 2. SOUND | install CMI AC97 Audio Codec driver |
| 3. USB2.0 | install USB 2.0 driver |
| 4. DirectX9 | install Microsoft DirectX 9 driver |
| 5. PC-CILLIN | install PC-CILLIN2002 anti-virus program |
| 6. PC-HEALTH | install PC-HEALTH monitor Utility |
| 7. MAGIC BIOS | install BIOS Live Update Utility |
| 8. VGA | install NVIDIA VGA driver |
| 9. REMOTE | install Remote Controller driver |
| 10. Audio RACK | install C-Media Audio Rack Utility |
| 11. BROWSE CD | to browse the contents of the CD |
| 12. EXIT | to exit from MAGIC INSTALL menu |

4-1 nFORCE install NVIDIA nFORCE Pack driver

* The path of the file is X:\DRIVER\SETUP.EXE

-
-
- IDE :** VIDIA ATAPI VENDOR SUPPORT DRIVER IS USED TO FIXED COMPATIBILITY ISSUE FOR IDE DEVICES
- AGP :** NVIDIA AGP DRIVER IS TO BE INSTALLED, IF YOU ARE USING AN AGP VGA CARD, NVIDIA GART WILL PROVIDE SERVICE ROUTINES TO YOUR VGA DRIVER AND INTERFACE DIRECTLY TO HARDWARE, PROVIDING FAST GRAPHIC ACCESS
- MEMCTL :** NVIDIA Memory Controller driver
- SMBUS :** NVIDIA SMBUS Controller driver
- ETHERNET :** NVIDIA nFORCE MCP networking



1. Click nFORCE when MAGIC INSTALL MENU appears



2. Click NEXT when NVIDIA Windows98/ME/2000/XP nForce Drivers Wizard appears



3. Click Finish to restart computer

4-2 VGA install NVIDIA VGA Driver



1. Click VGA when MAGIC INSTALL MENU appears
2. Click NEXT When NVIDIA Win95/98/ME/2000/XP Display Driver Windows appear



3. If You Want Re-start Computer , Click FINISH

4-3 Sound Install Dolby Digital 5.1 RTCE Driver



1. Click SOUND when MAGIC INSTALL MENU appears
2. When the driver installation appear, click NEXT, then start to install driver and click NEXT



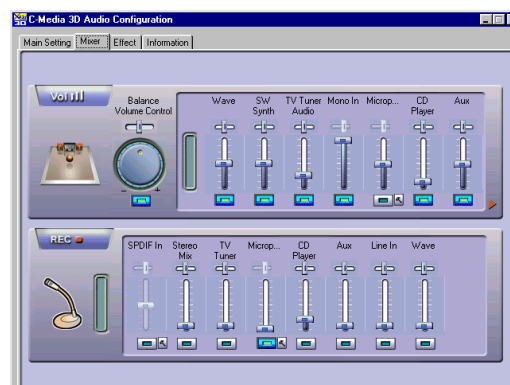
3. When choose destination location windows appear, please click NEXT, when select program select folder windows appear, please click NEXT, when start copy file windows appear, please click NEXT



4. Select OK and Restart Windows



5. This is 2/4/6 channel speaker setting and jack sensing configuration setting



6. This is mixer setting



7. This is sound effect setting

Note: The path of the file

For WIN98/NT4.0/WIN2K/XP is X:\CODEC\CM\SETUP.EXE

4-4 USB2.0 Install NVIDIA USB 2.0 Driver

Windows 98SE/ME/2000 USB 2.0 Driver installation



1. Click USB2.0 when MAGIC INSTALL MENU appears

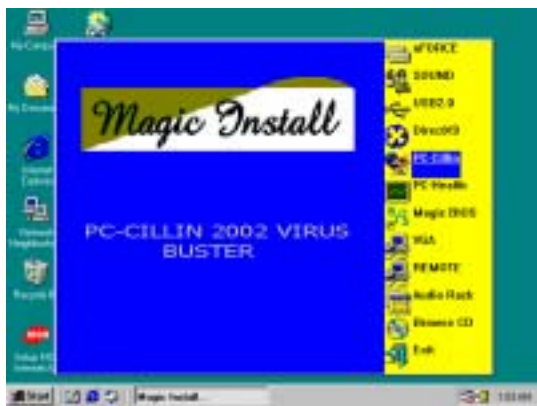


2. Click CLOSE and Restart Computer

Windows XP USB 2.0 Driver installation

1. Install Windows XP Service Pack 1 or later
2. Select My Computer, Press Right Button, Select Properties, Go to Hardware \ Device Manager, Remove Other Device \ Universal Serial Bus (USB) Controller
Restart Your Computer, It Will Find “NVIDIA USB2.0 Enhanced Host Controller” And “USB2.0 Root Hub Device”

4-5 PC-CILLIN Install PC-CILLIN 2002 Anti-virus program



1. Click PC-CILLIN when MAGIC INSTALL MENU appear
2. (1) Click "Install PC-CILLIN" when PC-CILLIN 2002 main menu appears, and Click NEXT when "Install Shield Wizard For PC-CILLIN 2002"
(2) Click Open Manual. you can learn PC-CILLIN 2002 how to use



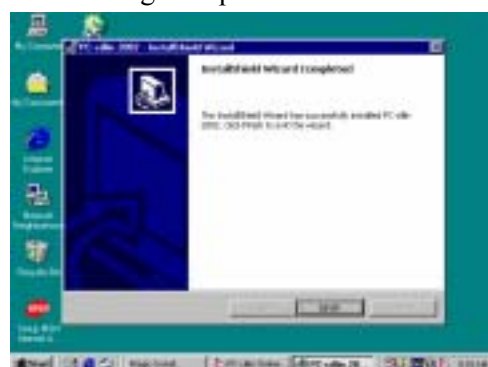
3. This is license agreement, select "I Accept the terms" and Click NEXT



4. Click NEXT and Enter your Customer Information, Click NEXT or choose Change to change the path for the file to be stored



5. Click INSTALL, Start to install the software



6. Setup Complete and click FINISH



7. After PC-CILLIN 2002 complete, Please register your information and get LICENSE KEY from TREND MICRO web site, enter your license key and click FINISH



8. finish register process, we recommend select update item to download newest engine code and virus code

Note : Please install ACROBAT READER, Before you read PC-CILLIN 2002 User Manual, the path at X:\acrobat\ar500eng.exe

4-6 PC-HEALTH Install NFORCE2 Hardware Doctor Utility

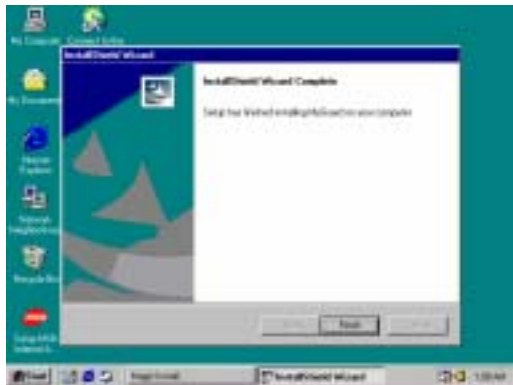
The path of the file is X:\NFORCE2\MYGUARD\SETUP.EXE
(support WINDOWS 98SE/ME/2000/XP)



1. Click PC-Health when Magic Install Menu appears



2. Click Next when Install shield wizard Window appears, Choose destination location and click Next, when the start copy file windows appear, click next



3. Select Finish after setup complete



4. Execute MY GUARD utility, On-time Monitoring your system health

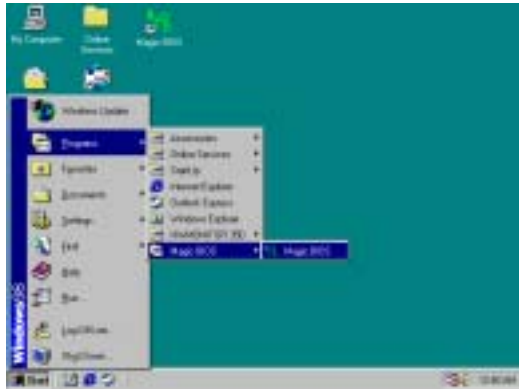
4-7 Magic BIOS Install BIOS Live Update Utility



1. Click Magic BIOS when Magic Install MENU appears



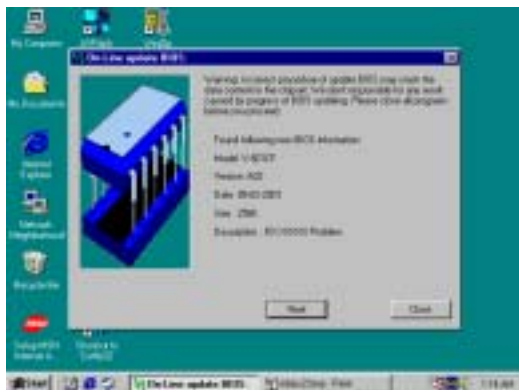
2. Click Next to install the Magic BIOS in Destination Folder



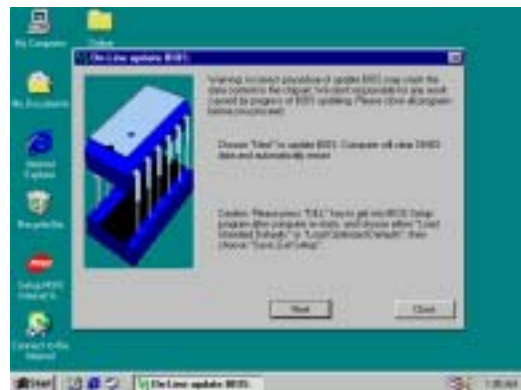
3. After finish Setup you will have a Magic BIOS icon in your screen



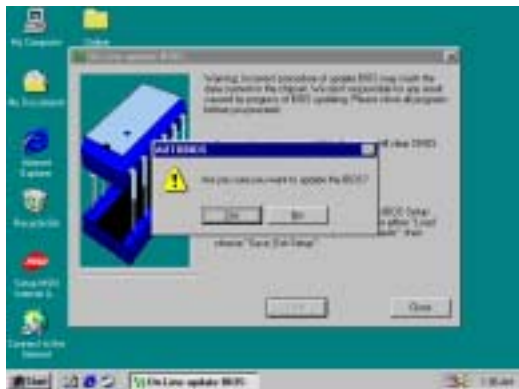
4. Double click the Magic BIOS icon you will have this picture, choose from internet you can upgrade BIOS On-line



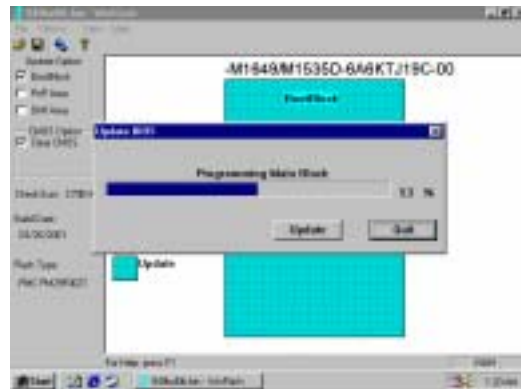
5. When On-line update BIOS the program will auto-check your BIOS version



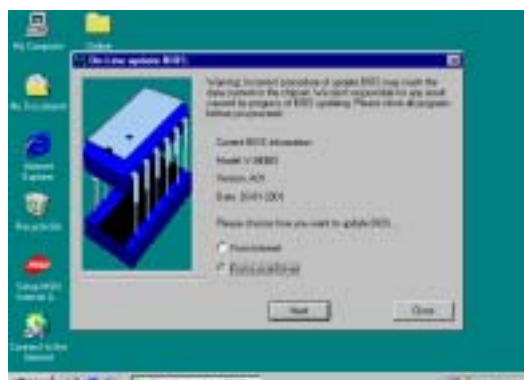
6. Click Next if you need update BIOS, after upgrade BIOS, the system will clear CMOS and automatically restart



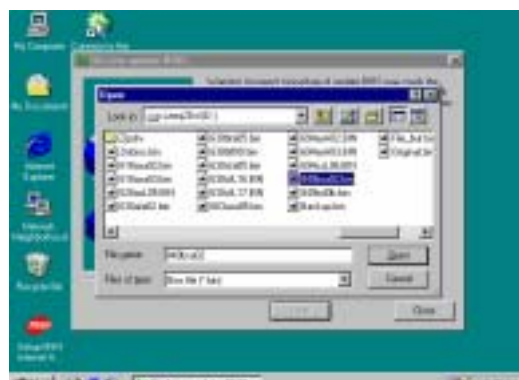
7. Click Yes if you want to update the BIOS otherwise choose No to exit



8. When System programming BIOS don't turn off power, after finish update BIOS, the system will clear CMOS and automatically Restart



9. When choose From Local Driver to update BIOS, you must have the correct BIOS file in your Local Driver



10. Choose the correct BIOS file to update BIOS

4-8 AUDIO RACK Install C-Media Audio Rack Utility



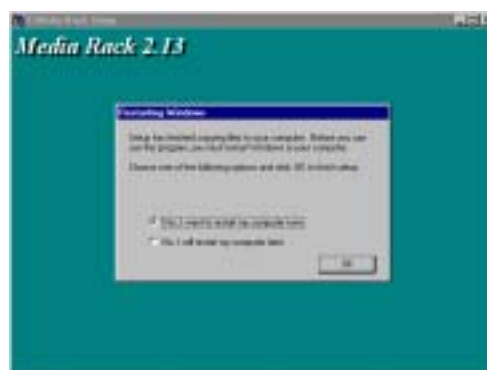
1. Click AUDIO RACK when MAGIC INSTALL MENU appears



2. When the utility installation appear, click NEXT



3. When choose destination location windows appear, please click NEXT, when select program select folder windows appear, please click NEXT, when start copy file windows appear, please click NEXT



4. Click FINISH then click OK complete install audio rack utility



5. C-MEDIA media rack table

4-9 HOW TO UPDATE BIOS

Before update BIOS please choose Disabled in “Flash Part Write Protect” item on “Miscellaneous Control” in BIOS Setup, please refer [page 32](#)

Method 1. Use “Magic BIOS” update BIOS in Windows 98 (refer [page 40](#))

Method 2. In DOS Mode

STEP 1. Prepare a boot disc. (you may make one by click START click RUN type SYS A: click OK)

STEP 2. Copy utility program to your boot disc. You may copy from DRIVER CD X:\FLASH\AWDFLASH.EXE or download from our web site.

STEP 3. Copy latest BIOS for NF18GFC from our web site to your boot disc.

STEP 4. Insert your boot disc into A:,
start the computer, type “Awdflash A:\NF18GFCAxxx.BIN /SN/PY/CC/R”
NF18GFCxxx.BIN is the file name of latest BIOS it can be NF18GFCA3.BIN or NF18GFCB2.BIN
SN means don't save existing BIOS data
PY means renew existing BIOS data
CC means clear existing CMOS data
R means restart computer

STEP 5. Push ENTER and the BIOS will be updated, computer will be restarted automatically.