

This publication, photographs, illustrations and software are under the protection of international copyright laws and all rights reserved. It does not allow any reproduction of this manual, content and any materials contained herein without the written consent of the authentic manufacturer.

The information in this manual is subject to change without notice. The manufacturer does neither represent nor warrant the contents hereof; and specifically disclaims any implied warranties of merchantability or fitness for any particular purpose. Furthermore, the manufacturer reserves the right to revise and change this publication from time to time, without the obligation of notifying any person of such revision or changes.

Trademarks

IBM, VGA, and PS/2 are registered trademarks of International Business Machines.

Intel, Pentium/II/III, Pentium 4, Celeron and MMX are registered trademarks of Intel Corporation.

Microsoft, MS-DOS and Windows 98/ME/NT/2000/XP are registered trademarks of Microsoft Corporation.

PC-cillin is a trademark of Trend Micro Inc.

AMI is a trademark of American Megatrends Inc.

It has been acknowledged that other brands or product names in this manual are trademarks or the properties of their respective owners.

**Copyright © 2003
All Rights Reserved
MS9087C Series, V1.0
I865PE/October 2003**

Table of Contents	
Trademark	I
Static Electricity Precautions	III
Pre-Installation Inspection	III
Chapter 1: Introduction.....	1
Key Features.....	2
Package Contents	5
Chapter 2: Mainboard Installation.....	6
Mainboard Components	7
I/O Ports	7
Installing the Processor.....	8
Installing Memory Modules	9
Jumper Settings	11
Install The Mainboard.....	11
Connecting Optional Devices.....	13
Install Other Devices	15
Expansion Slots	17
Chapter 3: BIOS Setup Utility.....	18
Introduction	18
Running the Setup Utility	19
Standard CMOS Setup Page.....	20
Advanced Setup Page	21
Features Setup Page	22
Power Management Setup Page	23
PCI/Plug and Play Setup Page.....	24
BIOS Security Features Setup Page	25
CPU PnP Setup Page	26
Hardware Monitor Page.....	27
Load Optimal Defaults.....	27
Save Changes and Exit	28
Discard Changes and Exit.	28
Chapter 4: About the Software & CD-ROM	29
Utility Software Reference.....	30
Hyper Threading CPU.....	31

Static Electricity Precautions

Static electricity could damage components on this mainboard. Take the following precautions while unpacking this mainboard and installing it in a system.

1. Don't take this mainboard and components out of their original static-proof package until you are ready to install them.
2. While installing, please wear a grounded wrist strap if possible. If you don't have a wrist strap, discharge static electricity by touching the bare metal of the system chassis.
3. Carefully hold this mainboard by its edges. Do not touch those components unless it is absolutely necessary. Put this mainboard on the top of a static-protection package with component side facing up while installing.

Pre-Installation Inspection

1. Inspect this mainboard whether there are any damages to components and connectors on the board.
2. If you suspect this mainboard has been damaged, do not connect power to the system. Contact your mainboard vendor about those damages.

Notice:

Owing to Microsoft's certifying schedule is various to every supplier, we might have some drivers not certified yet by Microsoft. Therefore, it might happen under Windows XP that a dialogue box (shown as below) pop out warning you this software has not passed Windows Logo testing to verify its compatibility with Windows XP. Please rest assured that our RD department has already tested and verified these drivers. Click the "Continue Anyway" button and go ahead the installation.



Chapter 1

Introduction

This mainboard has a **Socket-478** supporting **Intel Pentium 4/Hyper Threading Technology** processors with Front-Side Bus (FSB) speeds up to **800 MHz**. Hyper Threading Technology, designed to take advantage of the multitasking features in Windows XP, gives you the power to do more things at once.

This mainboard integrates the **Intel 865PE** Northbridge along with **Intel 82801EB I/O Controller Hub (ICH5)** chipsets that supports the **Serial ATA** —a new interface for high-performance and mainstream desktop PCs; the built-in **USB 2.0** providing higher bandwidth, implementing **Universal Serial Bus Specification Revision 2.0** and is compliant with **UHCI 1.1** and **EHCI 0.95**. This mainboard supports **AC 97 Audio Codec** and provides **Ultra DMA 33/66/100** function. It has one **8x AGP**, one **CNR** (Communications and Networking Riser) and five 32-bit **PCI** slots. There is a full set of I/O ports including two PS/2 ports for mouse and keyboard, one serial port, one parallel port and maximum eight USB2.0 ports – four back-panel ports and onboard USB connectors. **USB3/USB2** providing four extra ports by connecting the Extended USB Module to the mainboard.

This mainboard is a **Full ATX** mainboard and has power connectors for an ATX power supply.

Note: You must initiate the HT CPU function through BIOS setup. It is strongly recommended you refer to Page 31 for relative details.

Key Features

This mainboard has these key features:

Socket-478 Processor

- ◆ Supports **Intel Pentium 4 series** CPU with **Hyper Threading** Technology
- ◆ Supports up to **800 MHz** Front-Side Bus

Hyper-Threading technology enables the operating system into thinking it's hooked up to two processors, allowing two threads to be run in parallel, both on separate 'logical' processors within the same physical processor.

Chipset

There are **Intel 865PE Northbridge** and **Intel 82801EB I/O Controller Hub (ICH5)** in the chipsets in accordance with an innovative and scalable architecture with proven reliability and performance. Here is a list of the chipset arrangement and their respective features:

- ◆ Supports either an integrated graphics device (IGD) or an external graphics device on AGP. The AGP interface supports 1X/4X/8X AGP data transfers and 4X/8X AGP Fast Writes.
- ◆ Supports 3 GB of system memory and has a maximum bandwidth of 6.4 GB/s using DDR400 in dualchannel mode.
- ◆ Integrates an Ultra ATA 100 controller, two Serial ATA host controllers, one EHCI host controller, and four UHCI host controllers supporting eight external USB 2.0 ports.
- ◆ PCI Bus Interface: supports PCI Revision 2.3 Specification
- ◆ Integrated LAN Controller: WfM 2.0 and IEEE802.3 Compliant
- ◆ Integrated Serial ATA Host Controller: Independent DMA operation and Data Transfer Rate up to 1.5 Gb/s (150 MB/s)

Memory Support

- ◆ Three 184-pin DIMM sockets for DDR SDRAM memory modules
- ◆ Supports **DDR400** memory bus
- ◆ Maximum installed memory is 3GB

AC97 Audio Codec

- ◆ 6-CH hardware architecture allows multi-channel south bridge to playback 6CH audio
- ◆ Intel® AC' 97 (REV. 2.2) compatible, meeting Microsoft® PC2001 requirements
- ◆ Built-in earphone buffer and internal PLL, the latter saving additional crystal
- ◆ Line-in/rear out share the same jack; Center/bass share the MIC jack
- ◆ CRL® 3D: HRTF based BS3D compatible audio engine

Expansion Options

The mainboard comes with the following expansion options:

- ◆ Five 32-bit PCI slots
- ◆ One 8x AGP slot
- ◆ One Communications Network Riser (CNR) slot

Onboard IDE

- ◆ Two IDE Connectors
- ◆ Supports PIO (Programmable Input/Output) and DMA (Direct Memory Access) modes
- ◆ Supports IDE Ultra DMA bus mastering with transfer rates of 33/66/100 MB/sec

Serial ATA

- ◆ Two Serial ATA Connectors
- ◆ Transfer rate exceeding best ATA (~150 MB/s) with scalability to higher rates
- ◆ Low pin count for both host and devices

Onboard I/O Ports

The mainboard has a full set of I/O ports and connectors:

- ◆ Two PS/2 ports for mouse and keyboard
- ◆ One serial port
- ◆ One parallel port
- ◆ Eight USB2.0 ports (four back-panel ports, onboard USB connectorsUSB2/USB3 providing four extra ports
- ◆ Audio jacks for microphone, line-in and line-out

Fast Ethernet LAN (optional)

- ◆ **10 Mb/s and 100 Mb/s operation**
- ◆ Integrated Fast Ethernet MAC, physical chip, and transceiver onto a single chip
- ◆ Supports 10Mb/s and 100Mb/s N-way auto-negotiation
- ◆ Support ACPI power management
- ◆ Full Duplex Flow Control (IEEE 802.3x) and Half/Full duplex capability

USB 2.0

- ◆ Compliant with Universal Serial Bus Specification Revision 2.0
- ◆ Compliant with Intel's Enhanced Host Controller Interface Specification Revision 0.95
- ◆ Compliant with Universal Host Controller Interface Specification Revision 1.1
- ◆ PCI multi-function device consists of two **UHCI Host Controller** cores for full-/low-speed signaling and one **EHCI Host Controller** core for high-speed signaling
- ◆ Root hub consists 4 downstream facing ports with integrated physical layer transceivers shared by **UHCI** and **EHCI** Host Controller
- ◆ Support PCI-Bus Power Management Interface Specification release 1.1
- ◆ Legacy support for all downstream facing ports

BIOS Firmware

This mainboard uses AMI BIOS that enables users to configure many system features including the following:

- ◆ Power management
- ◆ Wake-up alarms
- ◆ CPU parameters and memory timing
- ◆ CPU and memory timing

The firmware can also be used to set parameters for different processor clock speeds.

Bundled Software

- ◆ **PC-Cillin 2002** provides automatic virus protection under Windows 98/ME/NT/2000/XP
- ◆ **Adobe Acrobat Reader V5.0** is the software to help users read .PDF files.

Dimensions

- ◆ Full ATX form factor of 305 x 244 mm

Note: Hardware specifications and software items are subject to change without notification.

Package Contents

Your mainboard package contains the following items:

- ☐ The mainboard
- ☐ The User's Manual
- ☐ One diskette drive ribbon cable (optional)
- ☐ One IDE drive ribbon cable
- ☐ The Software support CD

Optional Accessories

You can purchase the following optional accessories for this mainboard.

- ☐ The Extended USB module
- ☐ The CNR v.90 56K Fax/Modem card
- ☐ The Serial ATA cable (optional)

Note: You can purchase your own optional accessories from the third party, but please contact your local vendor on any issues of the specification and compatibility.

Chapter 2

Mainboard Installation

To install this mainboard in a system, please follow these instructions in this chapter:

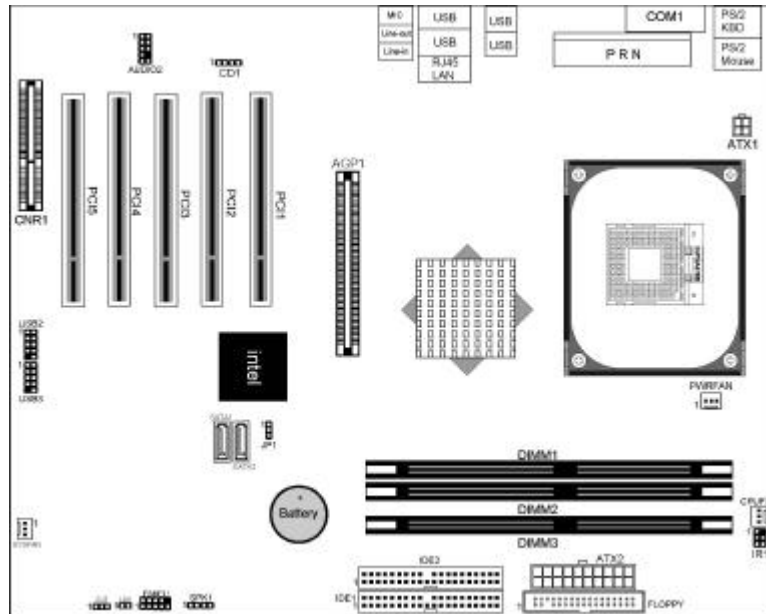
- ❑ Identify the mainboard components
- ❑ Install a CPU
- ❑ Install one or more system memory modules
- ❑ Make sure all jumpers and switches are set correctly
- ❑ Install this mainboard in a system chassis (case)
- ❑ Connect any extension brackets or cables to connectors on the mainboard
- ❑ Install peripheral devices and make the appropriate connections to connectors on the mainboard

Note:

1. Before installing this mainboard, make sure jumper JP1 is under Normal setting. See this chapter for information about locating JP1 and the setting options.
2. Never connect power to the system during installation; otherwise, it may damage the mainboard.

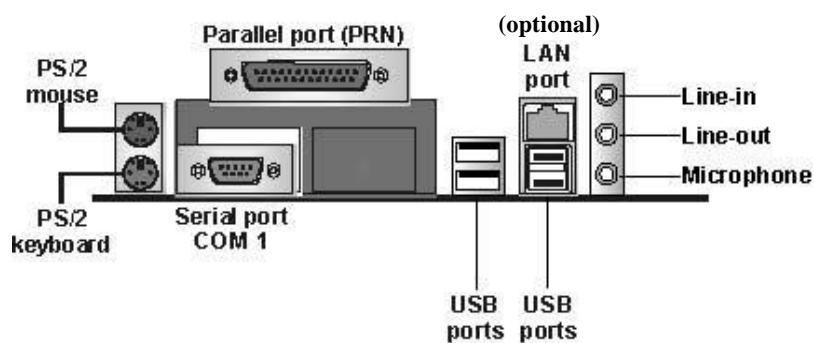
Mainboard Components

Identify major components on the mainboard via this diagram underneath.



I/O Ports

The illustration below shows a side view of the built-in I/O ports on the mainboard.



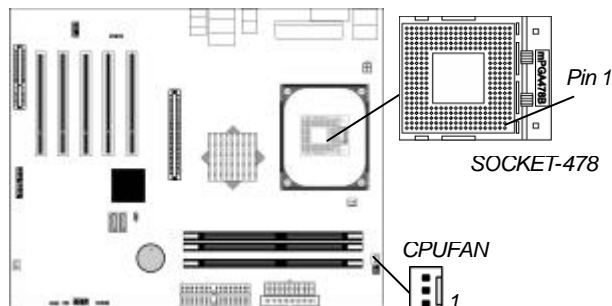
PS/2 Mouse	Use the upper PS/2 port to connect a PS/2 pointing device.
PS/2 Keyboard	Use the lower PS/2 port to connect a PS/2 keyboard.
Parallel Port (PRN)	Use the Parallel port to connect printers or other parallel communications devices.
COM1	Use the COM port to connect serial devices such as mice or fax/modems. COM1 is identified by the system as COM1.
LAN Port (optional)	Connect an RJ-45 jack to the LAN port to connect your computer to the Network.
USB Ports	Use the USB ports to connect USB devices.
Audio Ports	Use the three audio ports to connect audio devices. The first jack is for stereo Line-In signal. The second jack is for stereo Line-Out signal. The third jack is for Microphone.

Installing the Processor

This mainboard has a Socket 478 processor socket. When choosing a processor, consider the performance requirements of the system. Performance is based on the processor design, the clock speed and system bus frequency of the processor, and the quantity of internal cache memory and external cache memory.

CPU Installation Procedure

Follow these instructions to install the CPU:



1. Unhook the locking lever of the CPU socket. Pull the locking lever away from the socket and raising it to the upright position.

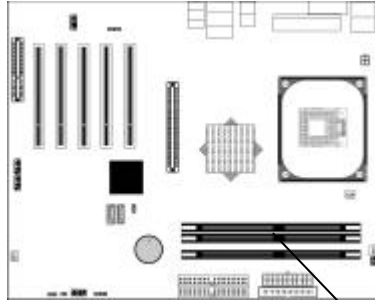
2. Match the pin1 corner marked as the beveled edge on the CPU with the pin1 corner on the socket. Insert the CPU into the socket. Do not use force.
3. Push the locking lever down and hook it under the latch on the edge of socket.
4. Apply thermal grease to the top of the CPU.
5. Install the cooling fan/heatsink unit onto the CPU, and secure them all onto the socket base.
6. Plug the CPU fan power cable into the CPU fan connector (CPUFAN) on the mainboard.

Installing Memory Modules

This mainboard accommodates three 184-pin 2.5V unbuffered Double Data Rate SDRAM (DDR SDRAM) Dual Inline Memory Module (DIMM) sockets, and supports up to 3.0 GB of **400** MHz DDR SDRAM.

DDR SDRAM is a type of SDRAM that supports data transfers on both edges of each clock cycle (the rising and falling edges), effectively doubling the memory chip's data throughput. DDR DIMMs can synchronously work with 100 MHz or 133 MHz memory bus.

DDR SDRAM provides 1.6 GB/s, 2.1 GB/s or 3.2 GB/s data transfer rate when the bus is 100 MHz, 133 MHz or 200 MHz, respectively. When activating the Dual Channel Technology, the bandwidth of memory bus will be doubled to 6.4 GB/s and Frequency 200 MHz (Channel 1: DIMM1+DIMM3).



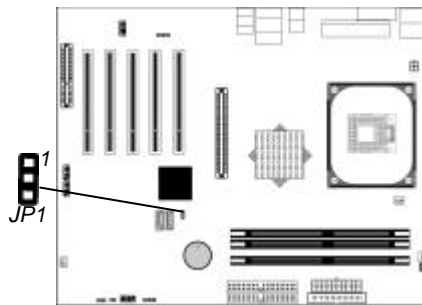
Memory Module Installation Procedure

These modules can be installed with up to 3 GB system memory. Refer to the following to install the memory module.

1. Push down the latches on both sides of the DIMM socket.
2. Align the memory module with the socket. There is a notch on the DIMM socket that you can install the DIMM module in the correct direction. Match the cutout on the DIMM module with the notch on the DIMM socket.
3. Install the DIMM module into the socket and press it firmly down until it is seated correctly. The socket latches are levered upwards and latch on to the edges of the DIMM.
4. Install any remaining DIMM modules.

Jumper Settings

Connecting two pins with a jumper cap is **SHORT**; removing a jumper cap from these pins, **OPEN**.



JP1: Clear CMOS Jumper

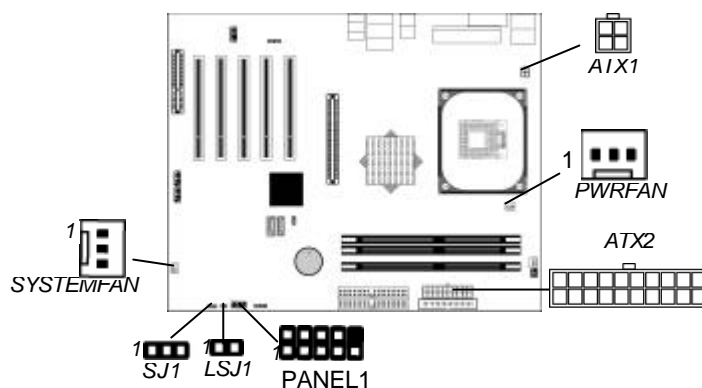
Use this jumper to clear the contents of the CMOS memory. You may need to clear the CMOS memory if the settings in the Setup Utility are incorrect and prevent your mainboard from operating. To clear the CMOS memory, disconnect all the power cables from the mainboard and then move the jumper cap into the **CLEAR** setting for a few seconds.

Function	Jumper Setting
Normal	Short Pins 1-2
Clear CMOS	Short Pins 2-3

Install the Mainboard

Install the mainboard in a system chassis (case). The board is an ATX size mainboard. You can install this mainboard in an ATX case. Make sure your case has an I/O cover plate matching the ports on this mainboard.

Install the mainboard in a case. Follow the case manufacturer's instructions to use the hardware and internal mounting points on the chassis.



Connect the power connector from the power supply to the **ATX2** connector on the mainboard. **ATX1** is the CPU Vcore power connector.

If there is a cooling fan installed in the system chassis, connect the cable from the cooling fan to the **SYSFAN** fan power connector on the mainboard.

Connect the power cooling fan cable to **PWRFAN** connector.

Connect the case LED cables to the optional Single color LED connectors **LSJ1** and **SJ1**.

ACPI LED function:

LSJ1 (1,2)	S0	S1	S3	S4/S5
	Dark	Dark	Light	Dark

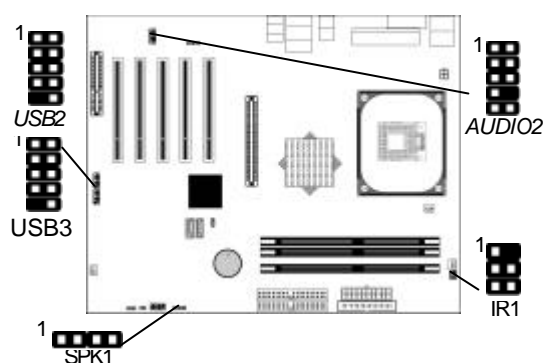
SJ1 (1,3) (2,3)	S0	S1	S3	S4/S5
	Light	Blinking	Blinking	Dark

Connect the case switches and indicator LEDs to the **PANEL1** connector. Here is a list of the PANEL1 pin assignments.

Pin	Signal	Pin	Signal
1	HD_LED_P	2	FP PWR/SLP
3	HD_LED_N	4	FP PWR/SLP
5	RESET_SW_N	6	POWER_SW_P
7	RESET_SW_P	8	POWER_SW_N
9	RSVD_DNU	10	KEY

Connecting Optional Devices

Refer to the following for information on connecting the mainboard's optional devices:



SPK1: Speaker Connector

Connect the cable from the PC speaker to the SPK1 connector on the mainboard.

Pin	Signal	Pin	Signal
1	SPKR	2	NC
3	GND	4	+5V

AUDIO2: Front Panel Audio Connector

This connector allows the user to install auxiliary front-oriented microphone and line -out ports for easier access.

Pin	Signal	Pin	Signal
1	AUD_MIC	2	AUD_GND
3	AUD_MIC_BIAS	4	AUD_VCC
5	AUD_FPOUT_R	6	AUD_RET_R
7	HP_ON	8	KEY
9	AUD_FPOUT_L	10	AUD_RET_L

USB2/USB3: Front panel USB Connector

The mainboard has USB ports installed on the rear edge I/O port array. Additionally, some computer cases have USB ports at the front of the case. If you have this kind of case, use auxiliary USB connectors USB2/USB3 to connect the front-mounted ports to the mainboard.

Pin	Signal	Pin	Signal
1	VERG_FP_USBPWR0	2	VERG_FP_USBPWR0
3	USB_FP_P0-	4	USB_FP_P1-
5	USB_FP_P0+	6	USB_FP_P1+
7	GROUND	8	GROUND
9	KEY	10	USB_FP_OC0

1. Locate the USB2/3 connector on the mainboard.
2. Plug the bracket cable onto the USB2/3 connector.
3. Remove a slot cover from one of the expansion slots on the system chassis. Install an extension bracket in the opening. Secure the extension bracket to the chassis with a screw.

IR1: Infrared Port

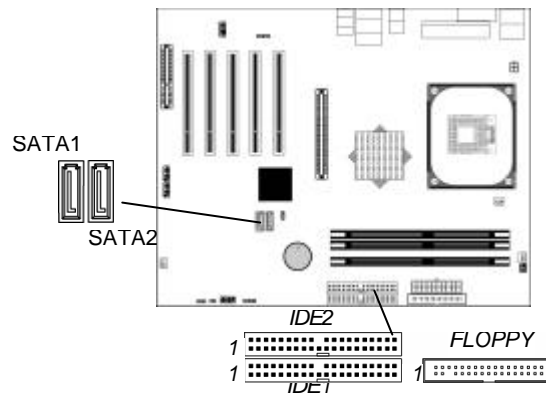
The infrared port allows the wireless exchange of information between your computer and similarly equipped devices such as printers, laptops, Personal Digital Assistants (PDAs), and other computers.

Pin	Signal	Pin	Signal
1	NC	2	KEY
3	+5V	4	GND
5	IRTX	6	IRRX

1. Locate the infrared port **IR1** connector on the mainboard.
2. If you are adding an infrared port, connect the ribbon cable from the port to the IR1 connector and then secure the port to an appropriate place in your system chassis.

Install Other Devices

Install and connect any other devices in the system following the steps below.



Floppy Disk Drive

The mainboard ships with a floppy disk drive cable that can support one or two drives. Drives can be 3.5" or 5.25" wide, with capacities of 360K, 720K, 1.2MB, 1.44MB, or 2.88MB.

Install your drives and connect power from the system power supply. Use the cable provided to connect the drives to the floppy disk drive connector **FLOPPY**.

IDE Devices

IDE devices include hard disk drives, high-density diskette drives, and CD-ROM or DVD-ROM drives, among others.

The mainboard ships with an IDE cable that can support one or two IDE devices. If you connect two devices to a single cable, you must configure one of the drives as Master and one of the drives as Slave. The documentation of the IDE device will tell you how to configure the device as a Master or Slave device. The Master device connects to the end of the cable.

Install the device(s) and connect power from the system power supply. Use the cable provided to connect the device(s) to the Primary IDE channel connector **IDE1** on the mainboard.

If you want to install more IDE devices, you can purchase a second IDE cable and connect one or two devices to the Secondary IDE channel connector **IDE2** on the mainboard. If you have two devices on the cable, one must be Master and one must be Slave.

Serial ATA Devices

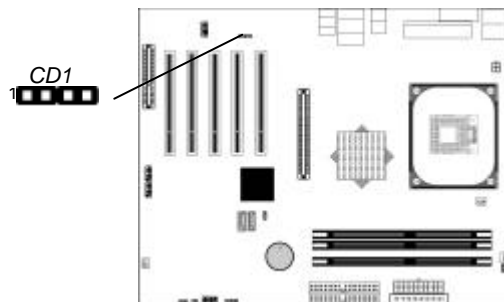
The **Serial ATA (Advanced Technology Attachment)** is the standard interface for the IDE hard drives, which is designed to overcome the design limitations while enabling the storage interface to scale with the growing media rate demands of PC platforms. It provides you a faster transfer rate of **150 Mbytes/second**. If you have installed a Serial ATA hard drive, you can connect the Serial ATA cables to the Serial ATA hard drive or the connector on the mainboard.

On the mainboard, locate the Serial ATA connectors **SATA1/2**, which support new Serial ATA devices for the highest data transfer rates, simpler disk drive cabling and easier PC assembly.

It eliminates limitations of the current Parallel ATA interface, but maintains register compatibility and software compatibility with Parallel ATA.

Internal Sound Connections

If you have installed a CD-ROM drive or DVD-ROM drive, you can connect the drive audio cable to the onboard sound system.

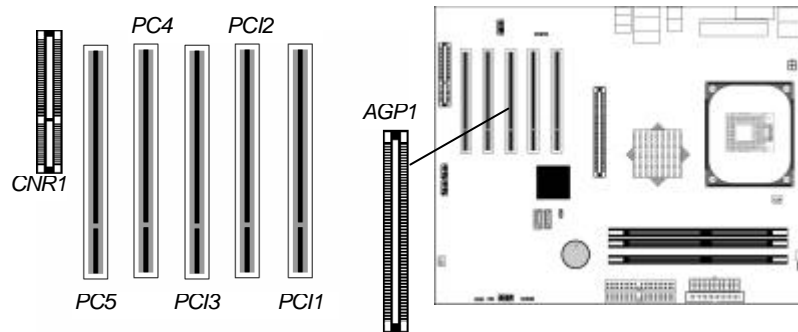


When you first start up your system, the BIOS should automatically detect your CD-ROM/DVD drive. If it doesn't, enter the Setup Utility and configure the CD-ROM/DVD drive that you have installed. On the mainboard, locate the 4-pin connector **CD1**.

Pin	Signal
1	CD IN L
2	GND
3	GND
4	CD IN R

Expansion Slots

This mainboard has one AGP, one CNR and five 32-bit PCI slots.



Follow the steps below to install an AGP/CNR/PCI expansion card.

1. Locate the AGP, CNR or PCI slots on the mainboard.
2. Remove the blanking plate of the slot from the system chassis.
3. Install the edge connector of the expansion card into the slot.
Ensure the edge connector is correctly seated in the slot.
4. Secure the metal bracket of the card to the system chassis with a screw.

8x AGP Slot

You can install a graphics adapter that supports the 8x AGP specification and has a 8x AGP edge connector in the AGP slot.

CNR Slot

You can install the CNR (Communications and Networking Riser) cards in this slot, including LAN, Modem, and Audio functions.

PCI Slots

You can install the 32-bit PCI interface expansion cards in the slots.

Chapter 3

BIOS Setup Utility

Introduction

The BIOS Setup Utility records settings and information of your computer, such as date and time, the type of hardware installed, and various configuration settings. Your computer applies the information to initialize all the components when booting up and basic functions of coordination between system components.

If the Setup Utility configuration is incorrect, it may cause the system to malfunction. It can even stop your computer booting properly. If it happens, you can use the clear CMOS jumper to clear the CMOS memory which has stored the configuration information; or you can hold down the **Page Up** key while rebooting your computer. Holding down the **Page Up** key also clears the setup information.

You can run the setup utility and manually change the configuration. You might need to do this to configure some hardware installed in or connected to the mainboard, such as the CPU, system memory, disk drives, etc.

Running the Setup Utility

Every time you start your computer, a message appears on the screen before the operating system loading that prompts you to “Hit if you want to run *SETUP*”. Whenever you see this message, press the **Delete** key, and the Main menu page of the Setup Utility appears on your monitor.

CMOS SETUP UTILITY – Copyright (C) 1985-2003, American Megatrends, Inc.	
▶Standard CMOS Setup ▶Advanced Setup ▶Features Setup ▶Power Management Setup ▶PCI / Plug and Play Setup ▶BIOS Security Features	▶CPU PnP Setup ▶Hardware Monitor Load Optimal Defaults Save Changes and Exit Discard Changes and Exit
← → ⏮ ⏭ ⏮: Move Enter: Select +/-: Value F10: Save Esc: Exit F1: General Help F9: Optimized Defaults	
Standards CMOS setup for changing time, date, hard disk type, etc. V02.54 (C) 1985-2003, American Megatrends, Inc.	

You can use cursor arrow keys to highlight anyone of options on the main menu page. Press **Enter** to select the highlighted option. Press the **Escape** key to leave the setup utility. Press +/- to modify the selected field's values.

Some options on the main menu page lead to tables of items with installed values that you can use cursor arrow keys to highlight one item, and press **PgUp** and **PgDn** keys to cycle through alternative values of that item. The other options on the main menu page lead to dialog boxes requiring your answer Yes or No by hitting the **Y** or **N** keys.

If you have already changed the setup utility, press **F10** to save those changes and exit the utility. Press **F1** to display a screen describing all key functions. Press **F9** to install the setup utility with a set of default values.

Standard CMOS Setup Page

This page displays a table of items defining basic information about your system.

CMOS SETUP UTILITY – Copyright (C) 1985-2003, American Megatrends, Inc. Standard CMOS Setup		
System Time:	00:02:01	Help Item
System Date:	Wed Jul 23, 2003	
►Primary IDEMaster : Auto		User [Enter], [TAB] or [SHIFT-TAB] to select a field. Use [+] or [-] to configure system time.
►Primary IDE Slave : Auto		
►Secondary IDE Master : Auto		
►Secondary IDE Slave : Auto		
Floppy Drive A : 1.44 MB 3 1/2		
Floppy Drive B : Disabled		

Date & Time	These items set up system date and time.
IDE	These items configure devices connected to the Primary and Secondary IDE channels.
Primary Master	To configure an IDE hard disk drive, choose <i>Auto</i> . If the <i>Auto</i> setting fails to find a hard disk drive, set it to <i>User</i> , and then fill in the hard disk characteristics (Size, Cyls, etc.) manually. If you have a CD-ROM drive, select the setting <i>CDROM</i> . If you have an ATAPI device with removable media (e.g. a ZIP drive or an LS-120), select <i>Floptical</i> .
Primary Slave	
Secondary Master	
Secondary Slave	
Floppy Drive A	These items set up size and capacity of the floppy diskette drive(s) installed in the system.
Floppy Drive B	

Advanced Setup Page

This page sets up more advanced information about your system. Handle this page with caution. Any changes can affect the operation of your computer.

CMOS SETUP UTILITY – Copyright (C) 1985-2003, American Megatrends, Inc.		
Advanced Setup		
Quick Boot	Enabled	Help Item
1 st Boot Device	1 st Floppy Drive	Allows BIOS to skip certain tests while booting. This will decrease the time needed to boot the system.
2 nd Boot Device	Network: Realtek R	
Bootup Num-Lock	On	
Graphic Win Size	64MB	
Configure DRAM Timing by SPD	Enabled	
Hyper Threading Function	Disabled	
Auto Detect DIMM/PCI Clk	Enabled	
Spread Spectrum	Disabled	

Quick Boot	If you enable this item, the system starts up more quickly by eliminating some of the power on test routines.
1st Boot Device 2nd Boot Device	Use these items to determine the device order the computer uses to look for an operating system to load at start-up time.
BootUp Num-Lock	This item determines if the Num Lock key is active or inactive at system start-up time.
Graphic Win Size	This item defines the size of aperture if you use a graphic adapter.
Configure DRAM Timing By SPD	This item allows you to enable or disable the DRAM timing defined by the Serial Presence Detect electrical.
Hyper Threading Function	If your P4 CPU is not HT CPU, this item will be hidden. If your P4 CPU is HT CPU, BIOS will show this item. You can set "Disabled" or "Enabled" to control HT CPU support in O.S. Set "Enabled" to test HT CPU function.

Auto detect DIMM/PCI Clock	When this item is enabled, BIOS will disable the clock signal of free DIMM/PCI slots.
Spread Spectrum	If you enable spread spectrum, it can significantly reduce the EMI (Electro-Magnetic Interference) generated by the system.

Features Setup Page

This page sets up some parameters for peripheral devices connected to the system.

CMOS SETUP UTILITY – Copyright (C) 1985-2003, American Megatrends, Inc. Features Setup		
OnBoard Floppy Controller	Enabled	Help Item Allows BIOS to Enable or Disable Floppy Controller.
Serial Port Address	3F8/IRQ4	
OnBoard IR Port	Disabled	
Parallel Port Address	Disabled	
OnBoard PCI IDE Controller	Both	
Audio Device	Enabled	
Ethernet Device	Enabled	
OnBoard USB Function	Enabled	
USB Function for DOS	Disabled	

OnBoard Floppy Controller	Use this item to enable or disable the onboard floppy disk drive interface.
Serial Port Address	Use this item to enable or disable the onboard COM1/2 serial port, and to assign a port address.
OnBoard IR Port	Use this item to enable or disable the onboard infrared port, and to assign a port address.
Parallel Port Address	Use this item to enable or disable the onboard Parallel port, and to assign a port address.

OnBoard PCI IDE Controller	Use this item to enable or disable either or both of the onboard Primary and Secondary IDE channels.
Audio Device	This item enables or disables the AC' 97 audio chip.
Ethernet Device	This item enables or disables the onboard Ethernet LAN.
OnBoard USB Function	Enable this item if you plan to use the USB ports on this mainboard.
USB Function For DOS	Enable this item if you plan to use the USB ports on this mainboard in a DOS environment.

Power Management Setup Page

This page sets some parameters for system power management operation.

CMOS SETUP UTILITY – Copyright (C) 1985-2003, American Megatrends, Inc. Power Management Setup		
ACPI Aware O/S	Yes	Help Item
Power Management/APM	Enabled	Yes / No
Suspend Mode	S1	ACPI support for Operating System.
Suspend Time Out	Disabled	Yes: If OS supports ACPI.
Resume On RTC Alarm	Disabled	No: If OS does not support ACPI.
LAN/Ring Power On	Disabled	
Keyboard Power On	Disabled	

ACPI Aware O/S	This item supports ACPI (Advanced Configuration and Power management Interface). Use this item to enable or disable the ACPI feature.
Power Management	Use this item to enable or disable a power management scheme. If you enable power management, you can use the items below to set the power management operation. Both APM and ACPI are supported.

Suspend Mode	This item selects the status S1(Stop Clock) or S3(Suspend to RAM) when the system enters the power-saving Suspend mode.
Suspend Time Out	This item sets up the timeout for Suspend mode in minutes. If the time selected passes without any system activity, the computer will enter power-saving Suspend mode.
Resume On RTC Alarm	The system can be turned off with a software command. If you enable this item, the system can automatically resume at a fixed time based on the system's RTC (realtime clock). Use the items below this one to set the date and time of the wake-up alarm. You must use an ATX power supply in order to use this feature.
LAN/Ring Power On	Your system can enter the software power down. If you enable this item, the system can automatically resume if there is traffic on the network adapter.
Keyboard Power On	If you enable this item, system can automatically resume by pressing hot keys on the keyboard or typing in the password. You must enable the Keyboard Power On jumper and use an ATX power supply in order to use this feature.

PCI / Plug and Play Setup Page

This page sets up some parameters for devices installed on the PCI bus and those utilizing the system plug and play capability.

CMOS SETUP UTILITY – Copyright (C) 1985-2003, American Megatrends, Inc. PCI / Plug and Play Setup		
Primary Graphics Adapter	AGP	Help Item
Allocate IRQ to PCI VGA	Yes	Select which graphics controller to use as the primary boot device.
PCI IDE BusMaster	Disabled	

Primary Graphics Adapter	This item indicates if the primary graphics adapter uses the PCI or the AGP bus. The default AGP setting still lets the onboard display work and allows the use of a second display card installed in an AGP slot.
Allocate IRQ to PCI VGA	If this item is enabled, an IRQ will be assigned to the PCI VGA graphics system. You set this value to No to free up an IRQ.
PCI IDE BusMaster	This item enables or disables the DMA under DOS mode. We recommend you to leave this item at the default value.

BIOS Security Features Setup Page

This page helps you install or change a password.

CMOS SETUP UTILITY – Copyright (C) 1985-2003, American Megatrends, Inc. BIOS Security Features Setup	
Security Settings	Help Item
Supervisor Password : Not Installed Change Supervisor Password Press Enter	Install or Change the password.

Supervisor Password	This item indicates whether a supervisor password has been set. If the password has been installed, <i>Installed</i> displays. If not, <i>Not Installed</i> displays.
Change Supervisor Password	You can select this option and press <Enter> to access the sub menu. You can use the sub menu to change the supervisor password.

CPU PnP Setup Page

This page helps you manually configure the CPU of this mainboard. The system will automatically detect the type of installed CPU and make the appropriate adjustments to these items on this page.

CMOS SETUP UTILITY – Copyright (C) 1985-2003, American Megatrends, Inc. CPU PnP Setup	
Manufacturer : Intel Ratio Status : Locked Ratio Actual Value : 18 Ratio CMOS Setting : 8 DRAM Frequency Auto CPU Frequency 133 MHz	Help Item Sets the ration between CPU Core Clock and the FSB Frequency. Note: If an invalid ratio is set in CMOS then actual and setpoint values may differ.

Manufacturer/ Ratio Status/ Ratio Actual Value	These items show the brand, the Locked/ Unlocked ratio status, and the actual ratio of the CPU installed in your system.
Ratio CMOS Setting	This item shows the current ratio of the CPU installed in your system.
DRAM Frequency	This item shows the frequency of the DRAM in your system.
CPU Frequency	This item shows the frequency of the CPU installed in your system.

Hardware Monitor Page

This page sets up some parameters for the hardware monitoring function of this mainboard.

CMOS SETUP UTILITY – Copyright (C) 1985-2003, American Megatrends, Inc. Hardware Monitor Setup		
*** System Hardware Monitor***		Help Item
Vcore	1.419V	
Vddq	1.548V	
Vcc5V	5.067V	
SB3V	3.370V	
SYSTEM Fan Speed	0 RPM	
CPU Fan Speed	4440 RPM	
NB Fan Speed	0 RPM	
SYSTEM Temperature	30°C/86°F	
CPU Temperature	46°C/114°F	

CPU/NB/System Temperature	These items display CPU, NB and system temperature measurement.
FAN & Voltage Measurements	These items indicate cooling fan speeds in RPM and the various system voltage measurements.

Load Optimal Defaults

This option opens a dialog box to ask if you are sure to install optimized defaults or not. You press <Y>, and then <Enter>, the Setup Utility loads all default values; or press <N>, and then <Enter>, the Setup Utility does not load default values.

Note: It is highly recommend that users enter this option to load optimal default values for accessing the best performance .

Save Changes and Exit

Highlight this item and press <Enter> to save the changes that you have made in the Setup Utility configuration. When the Save Changes and Exit dialog box appears, press Y to save and exit, or press N to return to the main menu.

Discard Changes and Exit

Highlight this item and press <Enter> to discard any changes that you have made in the Setup Utility and exit the Setup Utility. When the Discard Changes and Exit dialog box appears, press <Y> to discard changes and exit, or press <N> to return to the main menu.

Note: If you have made settings that you do not want to save, use the "Discard Changes and Exit" item and press <Y> to discard any changes you have made.

Chapter 4

About the Software & CD-ROM

The support software CD-ROM that is included in the mainboard package contains all the drivers and utility programs needed to properly run the bundled products. Below you can find a brief description of each software program, and the location for your mainboard version. More information on some programs is available in a README file, located in the same directory as the software.

Note: Never try to install software from a folder that is not specified for use with your mainboard.

Before installing any software, always inspect the folder for files named README.TXT, INSTALL.TXT, or something similar. These files may contain important information that is not included in this manual.

Utility Software Reference

All the utility software available on the CD-ROM is Windows compliant. It is provided only for the convenience of customers. The following software is furnished under license and may only be used or copied in accordance with the terms of the license.

Note: The software in these folders is subject to change at anytime without prior notice. Please refer to the support CD for available software.

AMI Flash Memory Utility

This utility enables you to erase the system BIOS stored on a Flash Memory chip on the mainboard, and lets you copy an updated version of the BIOS to the chip. Proceed with caution when using this program. If you erase the current BIOS and fail to write a new BIOS, or write a new BIOS that is incorrect, your system will malfunction. Refer to Chapter 3, Using BIOS for more information.

PC-CILLIN 2002

The PC-CILLIN software program provides anti-virus protection for your system. This program is available for Windows XP/2000/ME/98SE and Windows NT. Be sure to check the readme.txt and install the appropriate anti-virus software for your operating system.

We strongly recommend users to install this free anti-virus software to help protect your system against viruses.

Note: Update your virus software regularly to protect against new viruses.

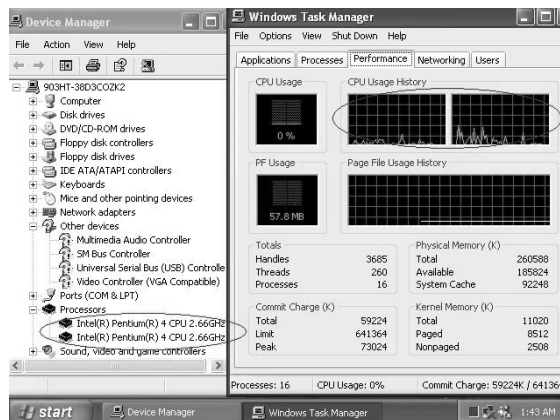
Hyper Threading CPU

You must update BIOS to initiate BIOS Hyper Threading Function and use HT CPU function under WinXP Operating System; if not, please disable this option.

- ◆ When BIOS detects the HT CPU, it shows the “Hyper Threading Function (default Disabled)” option, which you must set Enabled if you want to test HT CPU function. If there is no HT CPU, this option is hidden and default Disabled.



- ◆ You must re-install WINXP to activate the HT CPU function.



While you are in Windows Task Manager, please push down ctrl+Alt Del keys. A dual CPU appears in the CPU Usage History&Device Manager under WinXP.

Note: Hyper Threading Function only works under WINXP Operating System; therefore, disable it under other Operating System.
