

Chapter 7

MS-6204 CHASSIS INSTALLATION GUIDE

1. Overview

The MS-6204 is a specially designed chassis for MS-6131 mainboard. The chassis can accommodate one Floppy drive, Hard drive, and Slim Type CD-ROM. The chassis back panel support one VGA, Network(UTP), Speaker, Line-in, LPT, PS/2® mouse and keyboard.

2. Installation Tools

Tools you need before you start:

- screw driver (phillips cross head type)
- long nose pliers
- anti-static wrist strap or glove
- user's guide.

3. Screw

Two types of screws are provided by the MS-6204: Flat head screw and Screw w/washer.



Flat Head

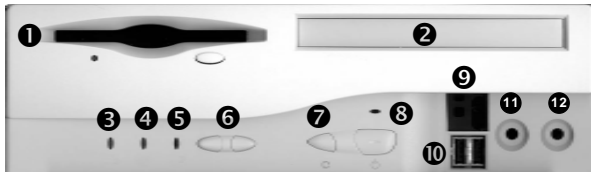
This type of screw is used to mount the mainboard into the Case.



Screw w/
Washer

This type of screw is used to mount the Floppy Drive, CD-ROM Drive, and Hard Drive into the Case.

4. Front Panel Overview



Front Panel (A)

- | | |
|-----------|---|
| 1 | 3.5" Floppy Drive |
| 2 | Slim Type CD-ROM Drive |
| 3 | Suspend LED indicator (Mail LED indicator reserved for AP) |
| 4 | Network LED indicator |
| 5 | Hard Drive LED indicator |
| 6 | Volume Controller |
| 7 | Reset Switch |
| 8 | Power Switch with LED indicator |
| 9 | IR Windows |
| 10 | USB ports |
| 11 | Earphone/Speaker Jack |
| 12 | Microphone Jack |



Front Panel (B)

- | | |
|-----------|---|
| 1 | 3.5" Floppy Drive |
| 2 | Slim Type CD-ROM Drive |
| 3 | Suspend LED indicator (Mail LED indicator reserved for AP) |
| 4 | Network LED indicator |
| 5 | Hard Drive LED indicator |
| 6 | Reset Switch |
| 7 | Power Switch with LED indicator |
| 8 | IR Windows |
| 9 | USB ports |
| 10 | Microphone Jack |

5. Installation Procedure

The Cables used



The Mainboard



Riser Card and Daughter Boards



1. Fit in Power Supply.



- 2. Secure the Power Supply with screws.**



- 3. Install the Riser Card.**



- 4. Screw the 4 points of Riser Card.**



- 5. Plug the Power Connector.**



- 6. Install the Control Panel
(2 Panels).**



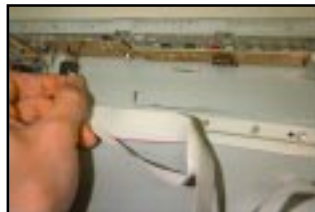
- 7. Secure the Control
Panel (4 points) with
screw.**



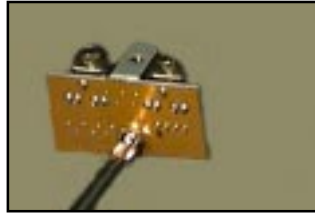
- 8. Install Control Cable
to Riser Card.**



- 9. Install Control Cable
to Control Panel.**



- 10. Secure the Audio Panel with screw.**



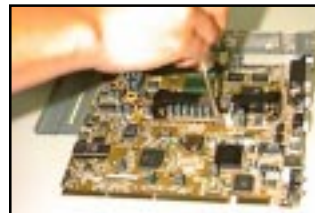
- 11. Install the Audio Panel.**



- 12. Connect the main-board to Bottom Disc.**



- 13. Secure Mainboard with screw (4 points).**



14. Install Mainboard to Chassis I



15. Install Mainboard to Chassis II.



16. Connect the Audio Cable.



17. Divide FDD cage.



- 18. Secure FDD to Cage with screw.**



- 19. Install Slim CD-ROM from front side.**



- 20. Screw CD-ROM to Handler (4 points).**



- 21. Install Hard Disk.**



22. Install Floppy Disk Drive.



23. Insert Cables (FDD, IDE1, IDE2).



24. Install SDRAM.



25. Install CPU.



- 26. Connect Power and Cable for HDD.**



- 27. Install Device Bay 1.**



- 28. Install Device Bay II.**



- 29. Secure Device Bay to Chassis with screw.**



- 30. Connect Power and FDD Cables for Floppy Disk Drive.**



- 31. Install the Spacer Support.**



- 32. Install CD-ROM Converter (MS-5943) to Slim CD-ROM.**



- 33. Secure MS-5943 with screw.**



- 34. Connect IDE and CD-ROM Cable to MS-5943.**



- 35. Install I/O Shield to rear side.**



- 36. Secure I/O Shield with screw.**



- 37. Install Front Panel.**



38. Install Upper Case.**39. Secure rear side with screw. This completes the entire DIY system.**

NOTE: Ensure that the voltage setting switch located on the power supply has been set to the right voltage before turning on the system.