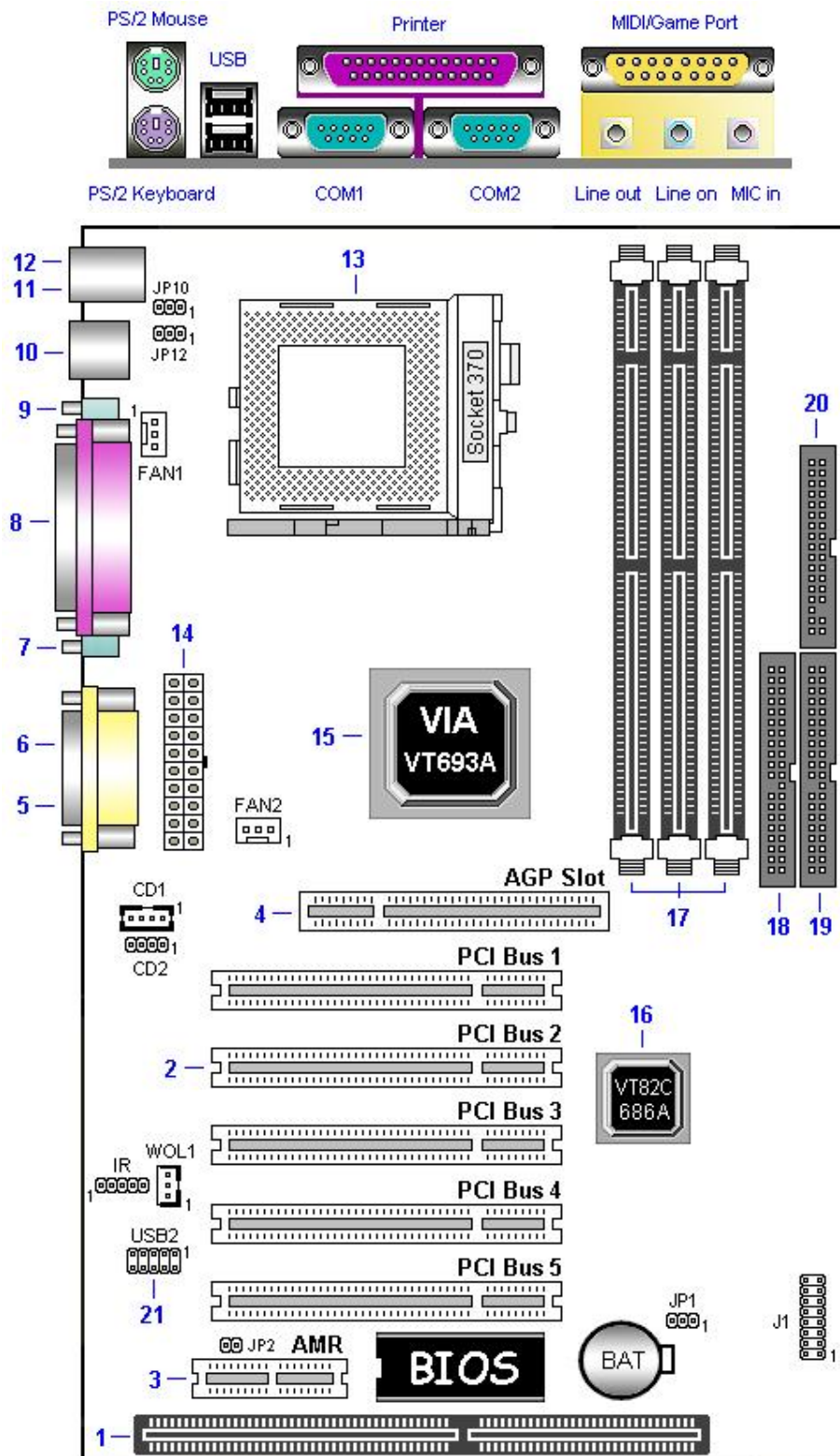




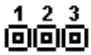
MAINBOARD
PT-693A-A1
Quick Reference Manual



Rev: 1.00



1. Mainboard Level Feature



1. **ISA Slot** : One 16-bit ISA Slot.
2. **PCI Slots** : Five 32-bit PCI Slots are provided.
3. **AMR Slot** : The Audio Modem Riser is a cost-effective AMR AC97/MC97.
4. **AGP Slot** : Accelerated Graphics Port (AGP).
5. **MIDI/Game Port** : 15-pin female MIDI/Joystick connector.
6. **Audio Port** : Three 1/8 female jacks for Line Out, Line In and MIC.
7. **COM2 Port** : 9-pin COM2 Ports.
8. **Parallel Port** : EPP and ECP compatible 25-pin D-Sub parallel Port
9. **COM1 Port** : 9-pin COM1 Ports.
10. **USB Ports** : Two 4-pin USB Connectors.
11. **PS/2 Mouse Port** : Supports PS/2 style mice.
12. **PS/2 Keyboard Port** : Supports PS/2 style keyboards.
13. **CPU Socket** : ZIF Socket 370 for Intel Pentium III CPU.
14. **ATX power connector** : 20-Pin ATX Power Connector.
15. **North bridge controller** : VIA 82C693A and memory controller Hub.
16. **South bridge controller** : VIA 82C686A I/O Controller Hub.
17. **SDR DIMM Sockets** : Three 168-pin DIMM Sockets.
18. **IDE1 connector** : Connector for first IDE channel.
19. **IDE2 connector** : Connector for second IDE channel.
20. **Floppy disk connector**: Built-in Floppy controller supports (2) 5.25" or 3.5" Floppy drives.
21. **USB Header** : Connector to the USB bracket for additional USB Port.

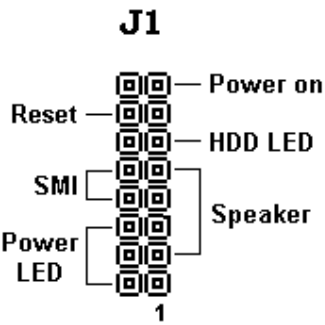


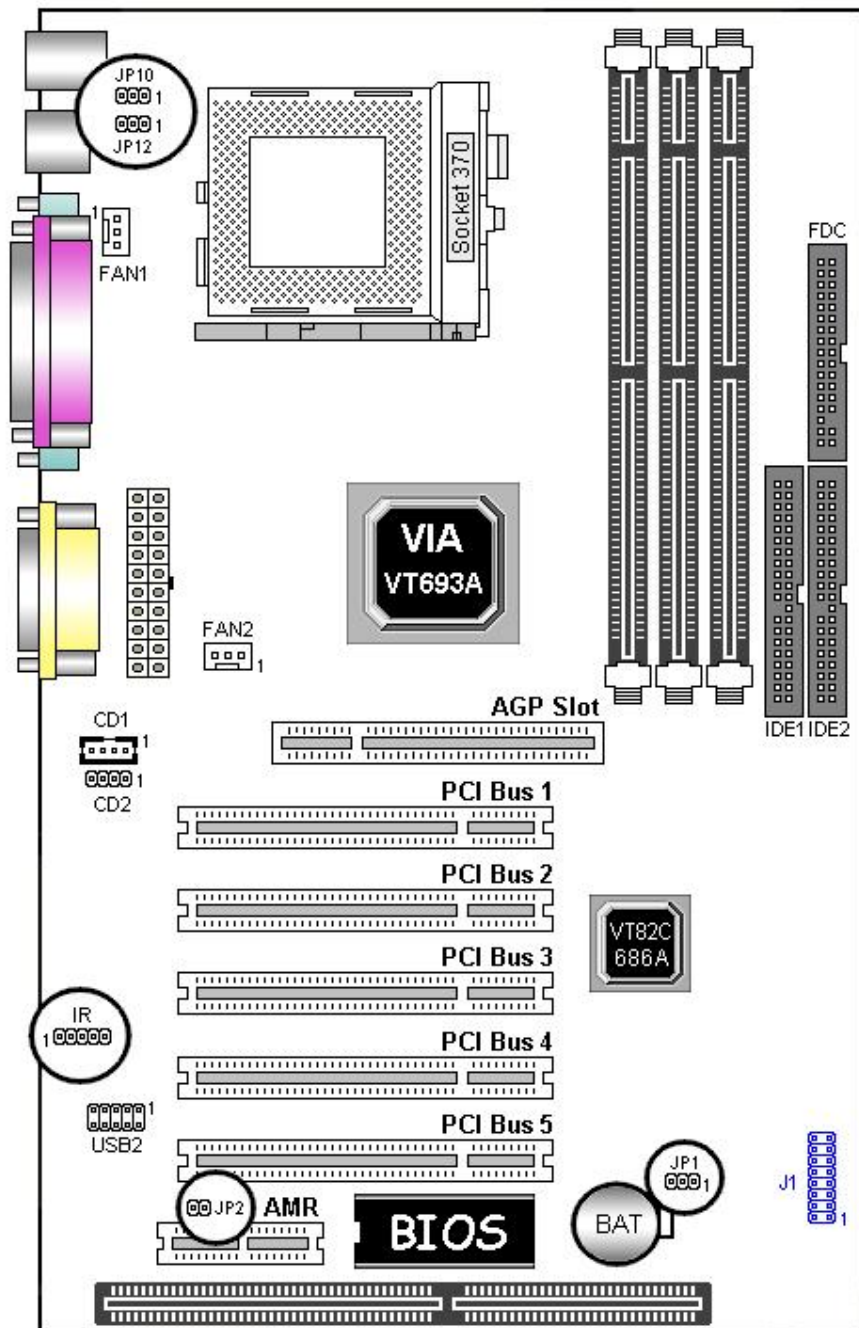
JP1	Assignment
	Normal Operation (Default)
	Clear CMOS Data (None)
	Onboard Battery Disabled

JP2	AC97/MC97 Mode
	Onboard AC97 only
	CNR MC97 only

JP7 ; JP8	K/B Power on
	Normal
	K/B wake up

JP12	CPU Type Select
	Celeron
	Cyrix





2.0 Please Select Model Name

Included in the Motherboard package you can find a CD-disk which contains the support drivers & utilities. Please insert this support CD-disk into your CD-ROM drive of PC, wait for the Autorun Screen then click "**PT-693A-A1**" for into the drivers & utilities installation.

Step1



Step2



2.1 Install VIA 4 in 1 Drivers

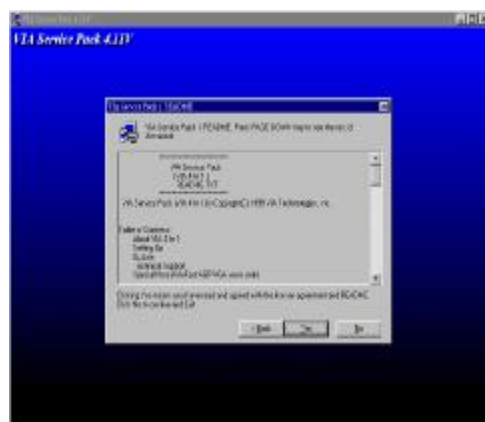
Click "Install VIA 4 in 1 Drivers".

Please follow the step charts below for installation.

Step1



Step2



2.2 Install Sound Driver (for with onboard Audio only)

Click "Install Sound Driver"

Please follow the step charts below for intallation

Step1



Step2

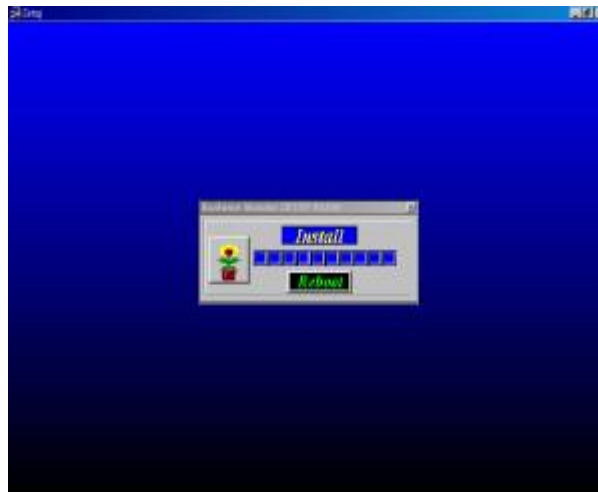


2.3 Install Hardware Monitor Utility

Click "Install Hardware Monitor Utility"

Please follow the step charts below for intallation.

Step1



2.4 Install Adobe Acrobat Reader

Click "Install Adobe Acrobat Reader"

Please follow the step charts below for intallation.

Step1



Step2



2.5 Other Driver Search

Click "Other Driver Search" for other drivers & utilities demand.

Step1

