

**MAINBOARD
PT-815E-A
Quick Reference Manual**

Rev: 1.00

1. Mainboard Level Feature

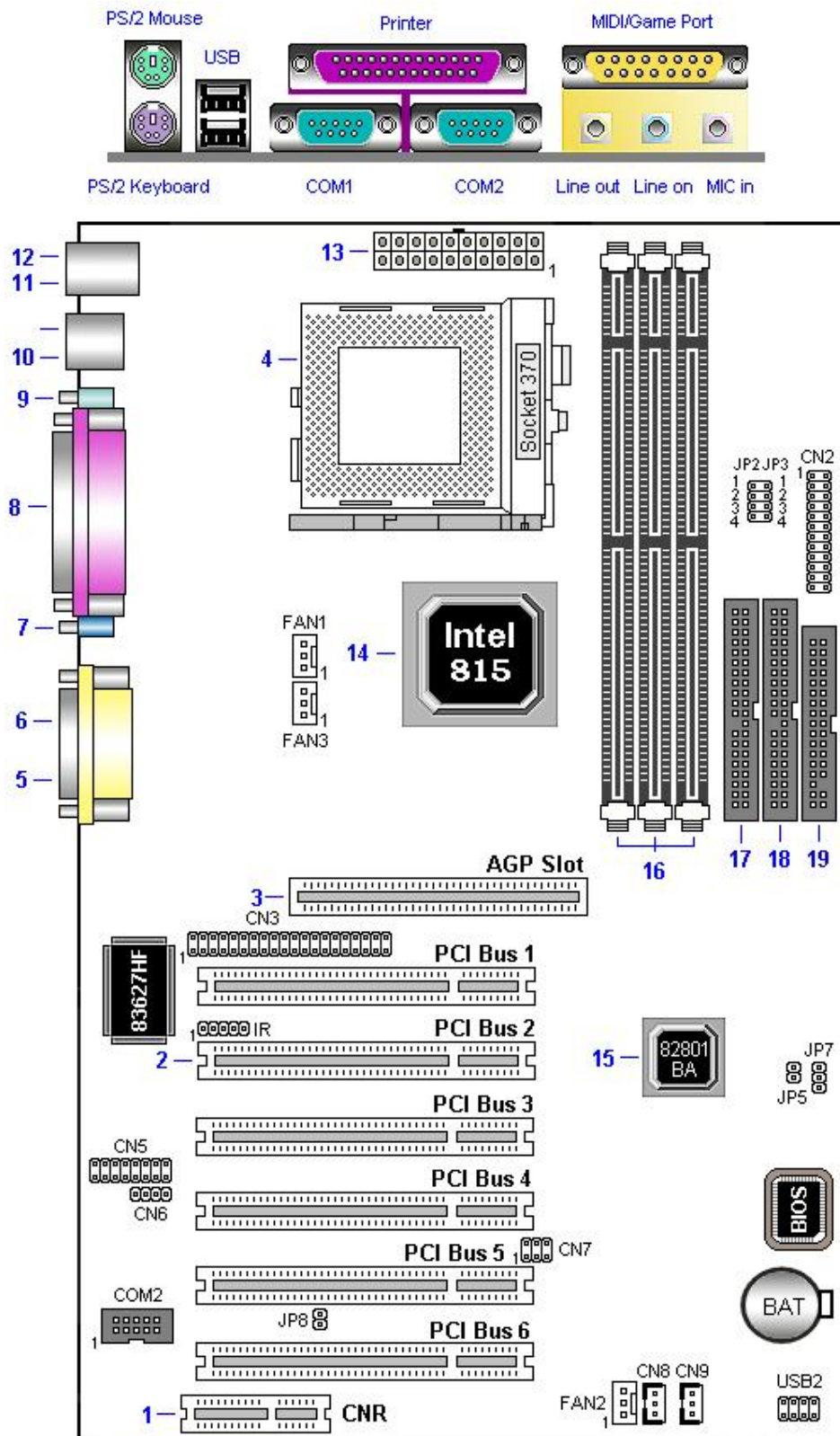
1. **CNR Slot** : Communication and Networking Riser (CNR) Connector.
2. **PCI Slots** : Five 32-bit PCI Slots are provided.
3. **AGP Slot** : Accelerated Graphics Port (AGP).

4. **CPU Socket** : ZIF Socket 370 for Intel Pentium III CPU.
5. **MIDI/Game Port** : 15-pin female MIDI/Joystick connector.
6. **Audio Port** : Three 1/8 female jacks for Line Out, Line In and MIC.
7. **VGA Port** : 15-pin VGA Ports.
8. **Parallel Port** : EPP and ECP compatible 25-pin D-Sub parallel Port
9. **COM1 Port** : 9-pin COM1 Ports.

10. **USB Ports** : Two 4-pin USB Connectors.
11. **PS/2 Mouse Port** : Supports PS/2 style mice.
12. **PS/2 Keyboard Port** : Supports PS/2 style keyboards.

13. **ATX power connector** : 20-Pin ATX Power Connector.
14. **North bridge controller** : Intel FW82815 and memory controller Hub.
15. **South bridge controller** : Intel FW82801BA I/O Controller Hub (ICH2).

16. **SDR DIMM Sockets** : Three 168-pin DIMM Sockets.
17. **IDE2 connector** : Connector for second IDE channel.
18. **IDE1 connector** : Connector for first IDE channel.
19. **Floppy disk connector** : Built-in Floppy controller supports (2) 5.25" or 3.5" Floppy drives.



JP7	Assignment
<div> <div>1</div> <div>2</div> <div>3</div> <div> <div></div> <div></div> <div></div> </div> </div>	Normal Operation (Default)
<div> <div>1</div> <div>2</div> <div>3</div> <div> <div></div> <div></div> <div></div> </div> </div>	Clear CMOS Data (None)
<div> <div>1</div> <div>2</div> <div>3</div> <div> <div></div> <div></div> <div></div> </div> </div>	Onboard Battery Disabled

Flash BIOS

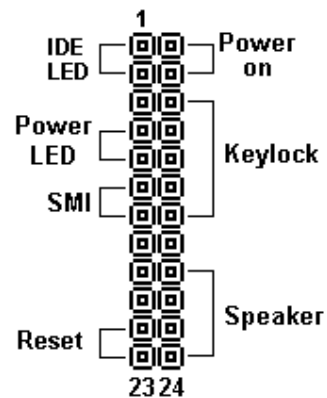
JP5	Assignment
<div> <div></div> <div></div> </div>	Unlocked
<div> <div></div> <div></div> </div>	Locked

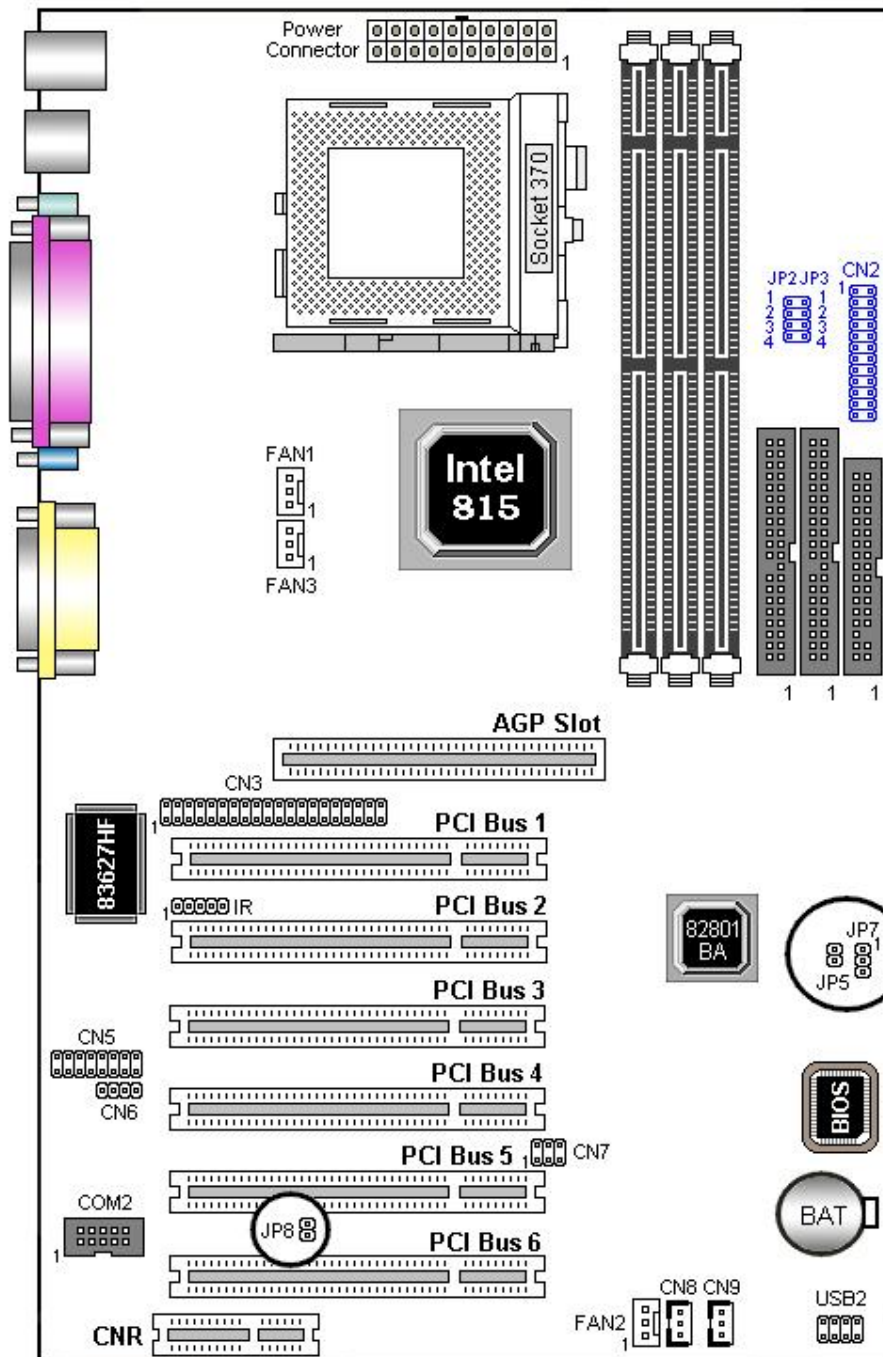
STR PCI wake-up Selection Jumper

JP8	Assignment
<div> <div></div> <div></div> </div>	Enable
<div> <div></div> <div></div> </div>	Normal

JP2/JP3 (FSB)	Assignment
<div> <div>1</div> <div></div> <div></div> <div></div> <div></div> <div>JP3</div> </div> <div> <div>1</div> <div></div> <div></div> <div></div> <div></div> <div>JP2</div> </div>	Auto
<div> <div>1</div> <div></div> <div></div> <div></div> <div></div> <div>JP3</div> </div> <div> <div>1</div> <div></div> <div></div> <div></div> <div></div> <div>JP2</div> </div>	133MHz
<div> <div>1</div> <div></div> <div></div> <div></div> <div></div> <div>JP3</div> </div> <div> <div>1</div> <div></div> <div></div> <div></div> <div></div> <div>JP2</div> </div>	100MHz
<div> <div>1</div> <div></div> <div></div> <div></div> <div></div> <div>JP3</div> </div> <div> <div>1</div> <div></div> <div></div> <div></div> <div></div> <div>JP2</div> </div>	66MHz

CN2





2. Software Installation

2.0 Please Select Model Name

Included in the Motherboard package you can find a CD-disk which contains the support drivers & utilities. Please insert this support CD-disk into your CD-ROM drive of PC, wait for the Autorun Screen then click "**PT-815E-A**" for into the drivers & utilities installation.

Step1



Step2



2.1 Install 815E Drivers

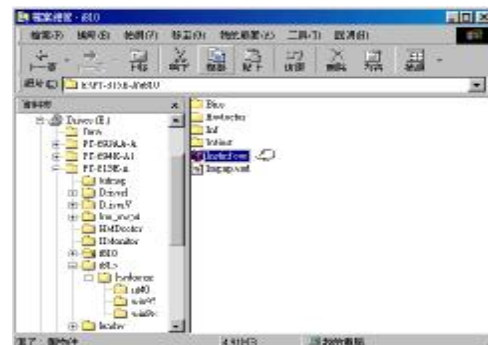
Click "Install 815E Drivers".

Please follow the step charts below for installation.

Step1



Step2



2.2 Install VGA Driver

Click "Install VGA Driver"

Please follow the step charts below for intallation

Step1



Step2



2.3 Install Sound Driver (for onboard Audio only)

Click "Install Sound Driver"

Please follow the step charts below for intallation

Step1



Step2



2.4 Install Hardware Monitor Utility

Click "Install Hardware Monitor Utility"

Please follow the step charts below for intallation.

Step1



2.5 Install Adobe Acrobat Reader

Click "Install Adobe Acrobat Reader"

Please follow the step charts below for intallation.

Step1



Step2



2.6 Other Driver Search

Click "Other Driver Search" for other drivers & utilities demand.

Step1

