

LogoEasy II



Thank you for using QDI upgraded innovation--- LogoEasy II, which is completely compatible with LOGOEASY. LOGOEASY II can be easily operated in a Windows environment, following in steps with the trend. It has added the functions of supporting JPEG images and true color display of 64K and 16M colors with regard to JPEG-format graphics files and the high-precision display equipment, which are now widely used.

LOGOEASY II supports the high-resolution 640x480 or 800x600 image display and full-screen, top right corner or bottom right corner display. It also supports simultaneous display of logo and sign-on message of the BIOS testing system. LOGOEASY II is a tool that can be operated in multi-platforms to refresh and change LOGO graphics including DOS, WINDOWS 9X, WINDOWS NT, WINDOWS ME and WINDOWS XP. In particular, the tools under the interface of WINDOWS are simple and easy to operate. It teaches you by taking your hand how to change LOGO.

ITEM		LogoEasy II	LogoEasy
Colors	16 colors	not support	not support
	256 colors	support	support
	16M colors	support	not support
Resolution	640*480	support	support
	800*600	support	not support
Display Self-test message at the same time		support	support
Full Screen Logo		support	support
Display logo on corners		support	support

When you power on or reset your system, the picture shown below will be displayed on the screen.

You can use “**LogoEasy II**” to replace it by any other logo which you want.

We provide two Utilities in the QDI Driver CD , which bring user the following two means to select:



A. Using CBLOGO.EXE Utility (Under DOS):

1. Copy "CBLOGO.EXE" and "AWDFLASH.EXE" from the directory \Utility located on QDI Driver CD to your hard disk.
2. Get the BIOS file from "AWDFLASH.EXE" or Download the BIOS file from the Website (<http://www.qdigrp.com>) and copy the BIOS file(xxxxxx.bin) to your harddisk.
3. Boot the system into DOS environment, Put your favor picture into BIOS file by "CBLOGO.EXE" command. For example: CBLOGO.EXE xxxxxx.bin myphoto.bmp
4. Flash the BIOS to motherboard by "AWDFLASH.EXE". For example: AWDFLASH xxxxxx.bin

B. Using QFlash (Under Windows):

1. Download the QFlash Utility from the Website (<http://www.qdigrp.com>) or get it from QDI Driver CD.
2. Run QFlash program step by step, following the directions until complete it .
3. Reboot the system, you can see the new picture displayed on the screen.



Note: If you require more parameters information concerning "CBLOGO.EXE", please refer to the online help. If you don't prefer the logo displayed on the screen during bootup, set the "Show Bootup Logo" option as Disabled in CMOS Setup.

BIOS_ProtectEasy



The BIOS of the mainboard is contained inside the Flash ROM. Severe viruses such as CIH virus are so dangerous that it may overwrite the BIOS of the mainboard. If the BIOS has been damaged, the system will be unable to boot. We provide the following solution which protects the system BIOS from being attacked by such viruses.

There are two choices which implements this function.

1. Set the jumper (BIOS_WP) as closed, the BIOS can not be overwritten.
2. Set the jumper (BIOS_WP) as opened, meanwhile set "Flash Write Protect" as Enabled in CMOS Setup. In this way, the BIOS can not be overwritten, but the DMI information can be updated.



RecoveryEasy II



Introduction:

RecoveryEasy II — the latest edition of RecoveryEasy, providing a more easy-to-operate and more secure and reliable tool for backing up and recovering the hard disk data. It will make your data on the hard disk more secure, and make your computer more reliable. RecoveryEasy II will bring you invaluable experiences. It allows you to experience unprecedented security and reliability with its one-hotkey backup, one-hotkey recovery and powerful virus-free functions.

Features:

RecoveryEasy II has the following features:

⇒ **Secure Backup**

- (1) Backup area can be reserved automatically in the High Memory Block (HMB) and all of partitions can be adjusted automatically.
- (2) Backup area is invisible to any operating system and its upper software, making it impossible to be attacked completely.

⇒ **Ease to Operate**

- (1) RecoveryEasy II is supported in both Chinese and English. You can easily enter Backup or Recover interface by simply pressing hotkeys. Backup or recover operation can be done with simple choices.
- (2) User are not required to define the size of backup area. When backup start, it will automatically allocate an area in the High Memory Block (HMB) of hard disk as backup area upon the necessity of data storage, so as to improve the utilization of hard disk space.

⇒ **Advantage Function**

- (1) Multifunction partition format can be supported in RecoveryEasy II, including FAT16, FAT32, NTFS etc.
- (2) The capability of supportable Hard Disk is up to 137GB.

⇒ **Flexible Combination**

The hard disk data can be chosen to be protected and restored as required.



The following attachment is Backup and Recovery Function table:

Backup	Backup content	Restore content
Partition Table	Partition Table	Partition Table
System Partition	System Partition+Partition Table	System Partition, PartitionTable
Whole Disk	All Partitions+Partition Table	System Partition, PartitionTable, Whole Disk
CMOS Setup	CMOS Setup	CMOS Setup

Menu Language and Hotkey Selection

Please press “DEL” key to enter CMOS setup during the POST(Power On Self Test), then user can see [RecoveryEasyII Setting] items of the “QDI Innovation features” menu, in which the language on RecoveryEasyII interface and hotkey could be selected .

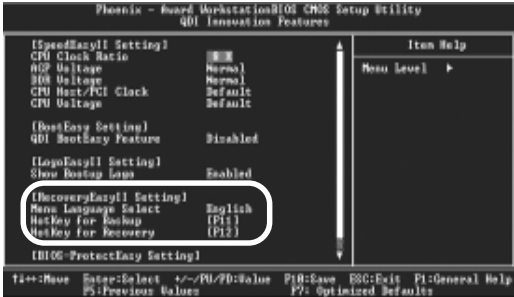


figure-1 QDI Innovation Features

1. Menu language Select

We provide two menu language for user to select, English is the default.

2 . Hot key for Backup

There are 12 options, including NULL and F2~F12. Key F11 is default. If NULL is selected, Backup interface can not be used with pressing hotkey. If you select one key of the rest 11options, you can enter Backup interface by pressing the hotkey you setup during POST.

3. Hot key for Recovery

There are 12 options, including NULL and F2~F12. Key F12 is default. If NULL is selected, Restore interface can not be used with pressing hotkey. If you select one key of the rest 11 options, you can enter Recover interface by pressing the hotkey you setup during POST.



Note: If the Backup hotkey and Recover hotkey have been set with the same key, the default will be Backup hotkey.

Hard Disk Selection Menu

If you installed the system with several IDE hard disks, and you have pressed the backup or restore hotkey during POST, hard disk selection menu will popup before you enter backup or recovery interface, in which all of the IDE hard disks installed on your system will be listed. You can scroll the high-light bar to the hard disk you want to work with using arrow key. Press ENTER to confirm, and the following operation will be performed on the selected hard disk:



figure-2 Hard Disk Select

Backup Function Introduction

press Backup Hotkey to enter Backup Interface during the POST(Power On Self Test), then the follwing interface will appear. You can scroll the highlight bar to the option you want to work with using arrow key. Press ENTER to confirm.

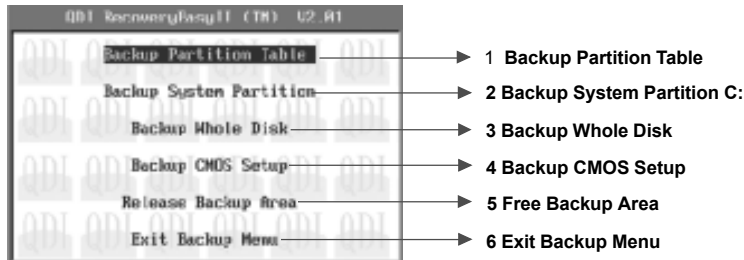


figure-3 Backup Interface



1 Backup Partition Table

It is used to backup partition table of current hard Disk. A partition table keeps the status of the hard disk partitions, such as the number of partitions, the type and size of each partition, etc. It is the most important information of the hard disk data structure. The incorrectness or loss of the table will result in the failure of reading data from the hard disk partitions.

2 Backup System Partition

It is used to backup the system partition of current hard disk. It makes a backup of the data in the bootable partition (activated partition) of current hard disk, as well as the partition table.

3 Backup Whole Disk

It makes a backup of all the useful data on the hard disk, including partition table and the data in all partitions.

4 Backup CMOS Setup

It is used to backup the settings you have made in the CMOS Setup.

5 Release Backup Area

It is used to unload the backup data on the hard disk, freeing the hard disk space.

6 Exit Backup Menu

It is used to Exit Backup Interface.

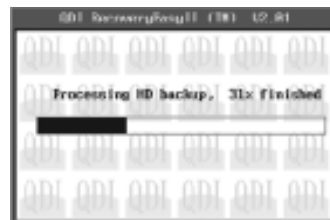


figure-4 Backup process

Recovery Function Introduction

Press Recovery Hotkey to enter Recovery Interface during the POST (Power On Self Test), then the following interface will appear. You can scroll the highlight bar to the option you want to work with using arrow key. Press ENTER to confirm.



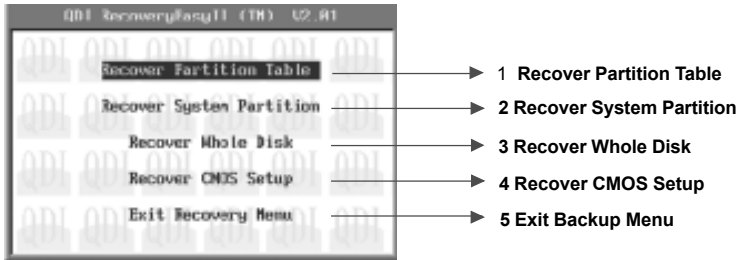


figure-5 Recover Interface

1.Recover Partition Table

It used to restore the partition table data stored in backup area to current Hard Disk.

2.Recover System Partition

It used to restore the system partition data stored in current backup area to current system partition. If current system partition doesn't match the backup system partition, a warning will be displayed indicating the recovery fails. This feature will only restore the bootable partition and contents in other partitions will be untouched.

3.Recover Whole Disk

It used to restore all the Hard Disk data stored in current backup area to current Hard Disk. This operation will restore the partition table and data in all partitions, as a result, existing data in current Hard Disk will be overwritten.

4.Recover CMOS Setup

This will restore the latest backup of the CMOS Settings you have made to the current CMOS.

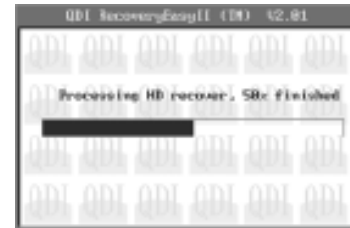
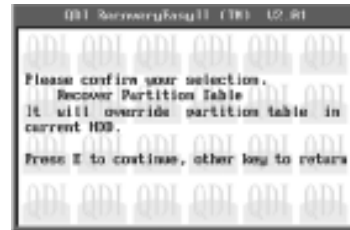


figure-4 Recover process



SpeedEasy

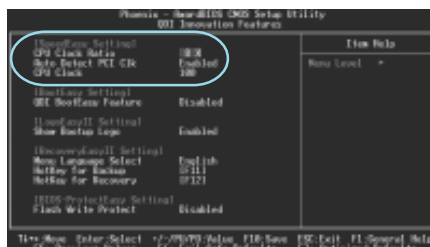


Procedures:

1. Correctly insert the your CPU.
2. Plug in other configurations and restore the system.
3. Switch on power to the system and press the key to enter BIOS Setup.
4. Enter "QDI Innovation features" menu to set up the CPU speed.
5. Save and exit BIOS Setup, your system will now boot successfully.

CPU SpeedEasy Setup Menu

Select <QDI Innovation features> item from the main menu and enter the sub-menu:



QDI Innovation features Menu

BIOS provides you with a set of basic values for your processor selection instead of the jumper settings. The processor speed can be manually selected on the "QDI Innovation features" menu screen.



Warning:

Do not set CPU frequency higher than its working frequency. If you do, we will not be responsible for any damages caused.



SpeedEasy II



Overview:

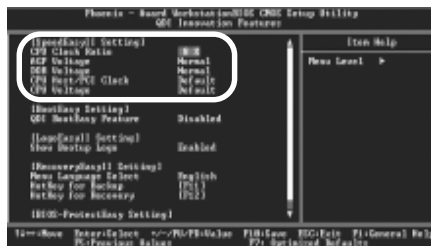
SpeedEasy II — has just recommended is the upgraded edition of SpeedEasy In addition to some functions of SpeedEasy, including the wire jumper-free function, the users can also realize in the BIOS setup the CPU core voltage adjustability. This doubtless renders a quicker and easier mode for overclocking and will further help the users to tap the maximum potentiality of the system.

Procedures:

1. Correctly insert the your CPU.
2. Plug in other configurations and restore the system.
3. Switch on power to the system and press the key to enter BIOS Setup.
4. Enter “QDI Innovation features” menu to set up the CPU speed.
5. Set CPU Clock ratio and CPU/DRAM Frequency and adjust CPU voltage.
6. Save and exit BIOS Setup, your system will now boot successfully.

CPU SpeedEasyII Setup Menu

Select <QDI Innovation features> item from the main menu and enter the sub-menu:



QDI Innovation features Menu

BIOS provides you with a set of basic values for your processor selection instead of the jumper settings. The processor speed can be manually selected on the “QDI Innovation features” menu screen.



Warning:

Do not set CPU frequency higher than its working frequency. If you do, we will not be responsible for any damages caused.



BootEasy



BootEasy technology enormously improves the long BOOT process time of computers. Reducing the wait time every user has to suffer when starting their computer. BIOS without BootEasy has to perform many routines every time when the system starts, such as checking system core of the computer and initializing system peripherals. Now with the BootEasy, BIOS will not run these repetitive Processes any longer, PC can boot-up without any redundant waiting for the displaying of starting OS. BootEasy is quite easy to use, choose the right option in CMOS SETUP, (refer to QDI Innovation features) it can be easily booted quickly. BootEasy save all the information when PC first normally boot-up, and it restores all the parameters for the system and thus let the PC boot freely and rapidly.



- Note:**
- Under the following conditions, PC will boot-up in normal way.
 - (1) PC boot-up for the first times after set option as Enabled.
 - (2) the system information saved by BIOS was damaged.
 - (3) PC fail to boot-up continually over three times.
 Setting the jumper BIOS_WP as open if you encounter the above conditions.
 - Don't power off or reset system while BootEasy initializing.
 - set "QDI BootEasy Feature" as "Disabled" before you replace system equipment.set "QDI BootEasy Feature" as "Enabled" after you accomplished replacing.

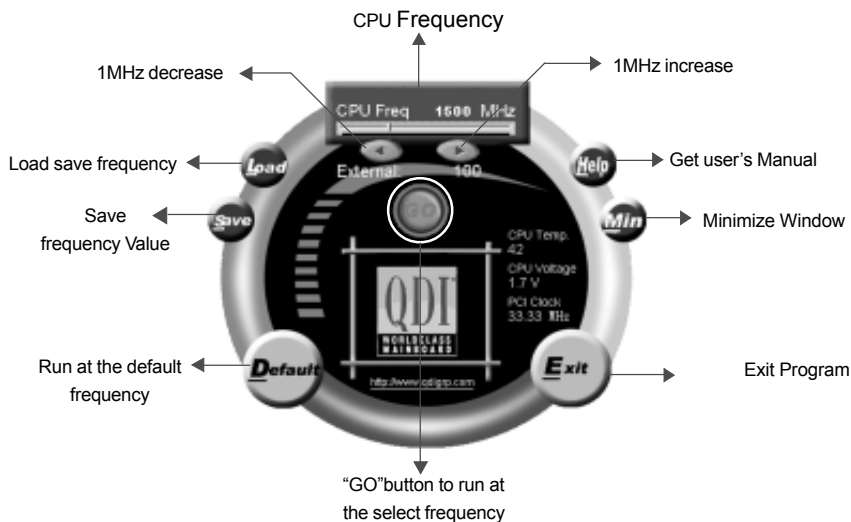


StepEasyII



As one of the Legend QDI's innovations, StepEasyII is a powerful and efficient Easy Technology for PC DIY fans. It provides a friendly interface for you that you can adjust the CPU frequency conveniently and directly. It is so powerful that you can change the CPU frequency just in a few seconds under the operating system (Windows 95/98/ME/2000/NT) and have no need to reset the PC or change the jumpers. In addition, StepEasyII can decrease the risk of changing the CPU frequency to minimum. As long as you conform to the steps of tuning the CPU frequency, there is almost no risk to adjust the frequency. Its second strong function is system monitoring, enables you to view some key reference data concerning computer health in real time.

The following figure is the StepEasyII interface for your reference:



Because there exists some risk for the CPU chip or the mainboard to change the CPU frequency , We suggest you read the manual carefully before installing QDI StepEasyII
When start QDI StepEasyII, to avoid accident, we recommend you to close your other program before run StepEasyII.

1. You can click on the 1MHz increase (1MHz decrease) or press shortcut key "+"("-") to set the wanted frequency, then click on the "GO" button to get the wanted frequency.
2. Also, you can click on the "Default" button , then click on the "GO" button to get the default frequency.
3. StepEasyII considerably provides users to save his successful CPU tune frequency for later use .If user wants to save the current frequency , he can clicks on the "Save" button to realize it.
4. When click on the "Load" button , the saved CPU frequency is obtained immediately.
5. When click on the "Min" button, the utility will minimize to an icon in the right-bottom task tray. Whenever user clicks the QSE(QDI StepEasyII abbr.) icon in the task tray, the utility will be activated in the current window.
6. The real-time system information such as CPU temperature,CPU voltage and PCI clock will automatic shown on the ineterface.



Note:

1. QDI StepEasyII can only support the QDI motherboard with the clock chip that supports StepEasyII.
2. The performance of StepEasyII depends on the CPU, DRAM, peripheral equipments and the software running.
3. There exist some risks to change the CPU frequency for the CPU or motherboard. StepEasyII can decrease the risks to minimum. But Legend QDI will not be responsible for any damages caused.
4. If the system halts while running StepEasyII, please press the power button until the system powers down .Restart your computer ,and the system will run in the normal status.
5. When the system was woken up from S3 or S4 status,please click on the "GO"button to run at the selected frequency.

